



Boydell Court, St John's Wood Park, St John's Wood, NW6

£999 Per week

For further information,  
please call our Park Road  
Branch on 0207 586 6699

This light and airy apartment has 3 double bedrooms with beautiful walnut wooden flooring throughout, marble bathrooms with power showers, a 42 inch TV. Its based on the 6th Floor with 24 hour portorage, car parking on a first come first serve basis. Central heating and hot water inclusive.

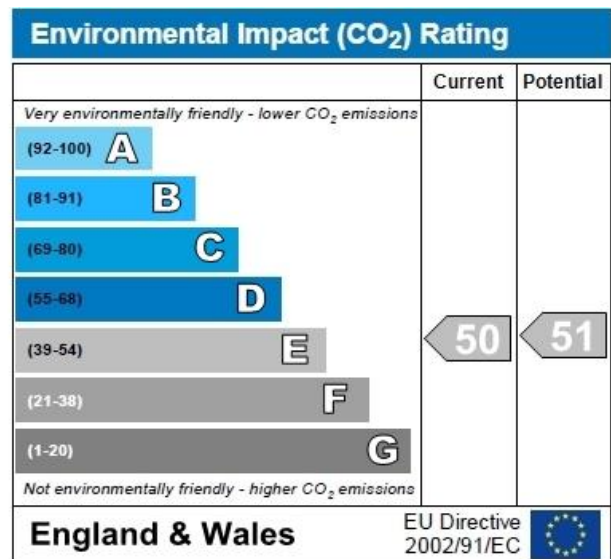
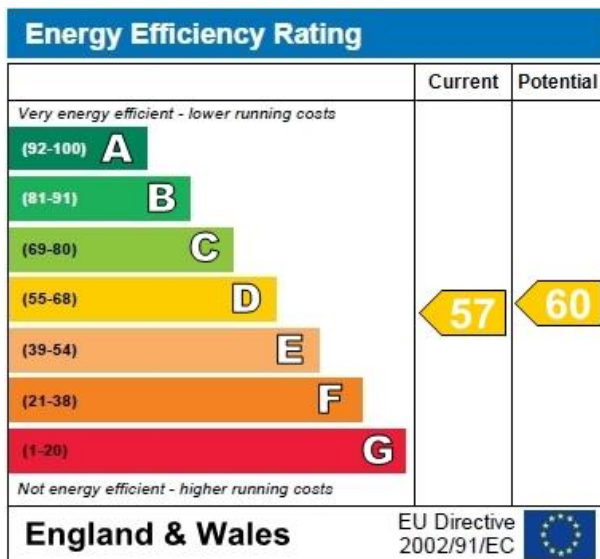
## Accommodation

This light and airy apartment has 3 double bedrooms with beautiful walnut wooden flooring throughout, marble bathrooms with power showers

£999

## Benefits

- Power showers..
- 3 Double bedrooms,
- 24 hour portorage
- Gated Development
- Interior designed.
- Wooden flooring throughout
- Marble bathrooms,
- 6th Floor

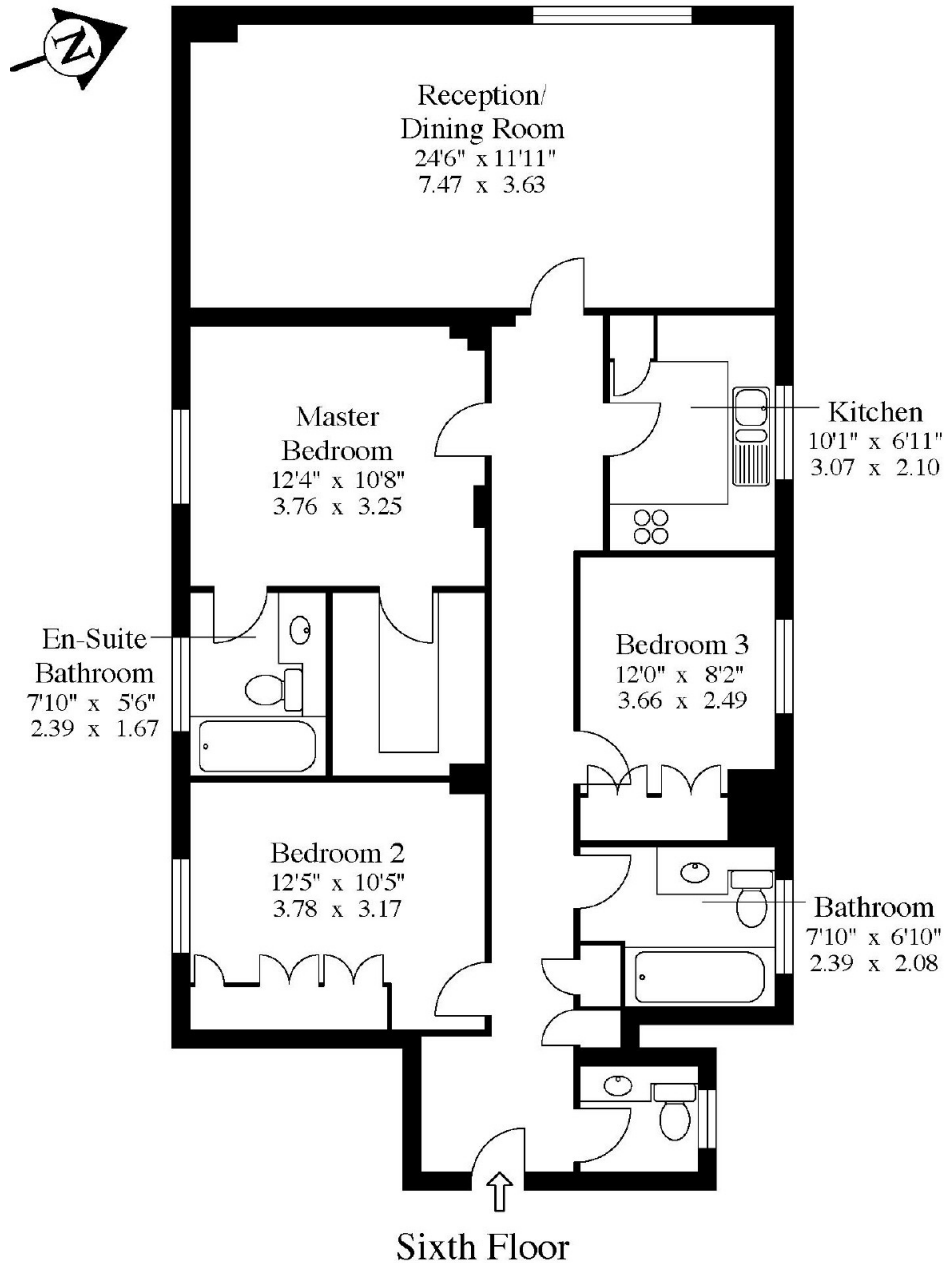






47 Boydell Court,  
St. Johns Wood Park,  
NW8.

Approx Gross Floor Area = 1111 Sq. Feet  
= 103.2 Sq. Metres



For illustrative purposes only. Not to scale.

Prepared by Making Plans Ltd. Tel : 0113 258 7607

You may download, store and use the material for your own personal use and research. You may not republish, retransmit, redistribute or otherwise make the material available to any party or make the same available on any website, online service or bulletin board of your own or of any other party or make the same available in hard copy or in any other media without the website owner's express prior written consent. The website owner's copyright must remain on all reproductions of material taken from this website.