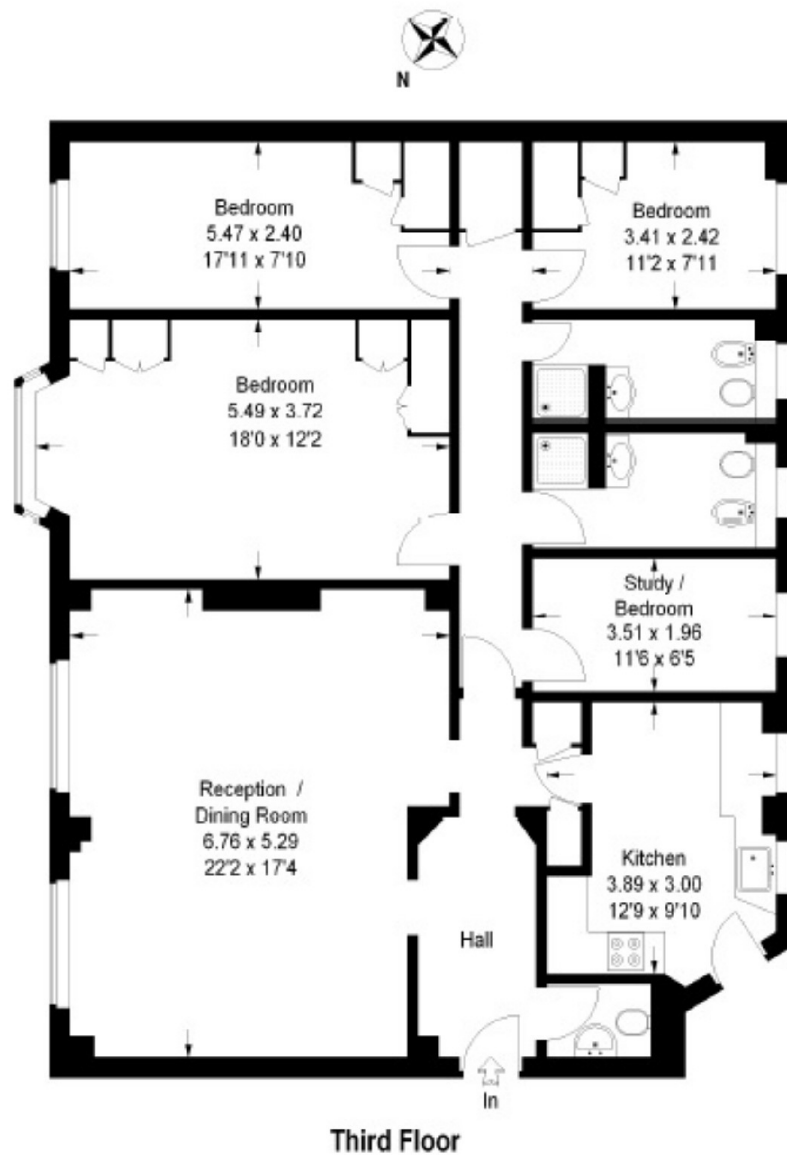


Fursecroft Flat 11 Fursecroft W1H 5LF

A bright and spacious four bedroom, two bathroom apt (1,432 sq ft/133 sq m) on the third floor of this lovely period 24 hour portered building

George Street

Approximate Gross Internal Area = 133 sq m / 1432 sq ft



You may download, store and use the material for your own personal use and research. You may not republish, retransmit, redistribute or otherwise make the material available to any party or make the same available on any website, online service or bulletin board of your own or of any other party or make the same available in hard copy or in any other media without the website owner's express prior written consent. The website owner's copyright must remain on all reproductions of material taken from this website.