



Hill Street, Mayfair, W1J

£960 Per week

For further information,
please call our Park Road
Branch on 0207 586 6699

This lateral two bedroom conversion apartment is situated on the sixth floor of one of Mayfair's most prestigious addresses. The apartment is set over 728sq ft. and comprises, two spacious double bedroom (the master with an en-suite bathroom), two modern fitted bathrooms, airy and spacious reception room with rear facing views over Hays Mews, modern fitted kitchen and further benefits from ample storage space.

Hill Street, benefits from spacious living accommodation, lift service, on-site building manager, and is nestled conveniently between two of London's Royal Parks: Hyde Park and Green Park, with West end's immense entertaining life style. Available NOW for 6 months or longer.

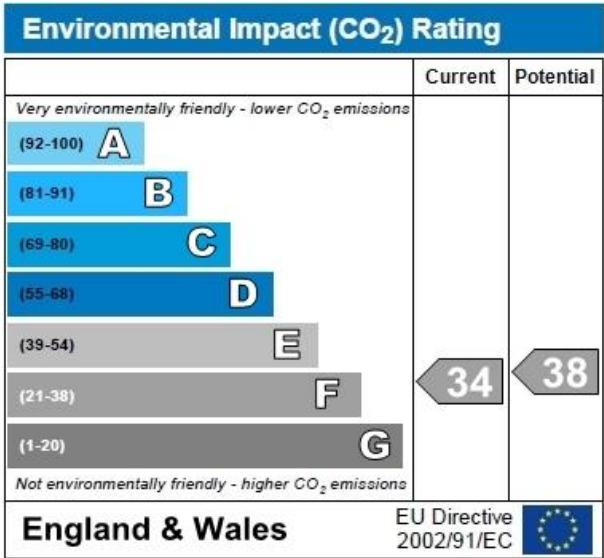
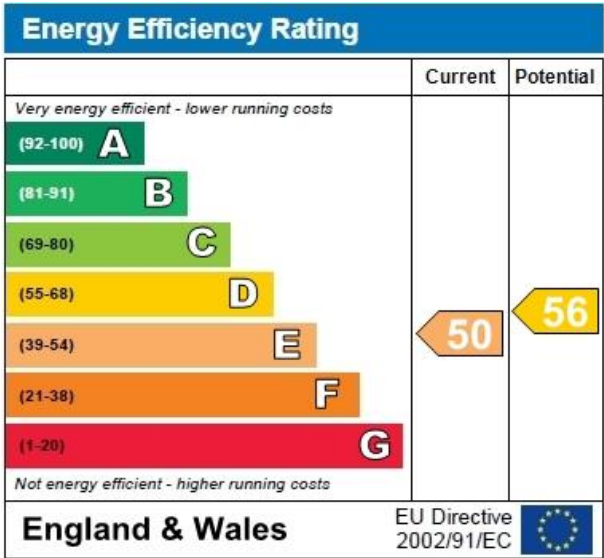
Accommodation

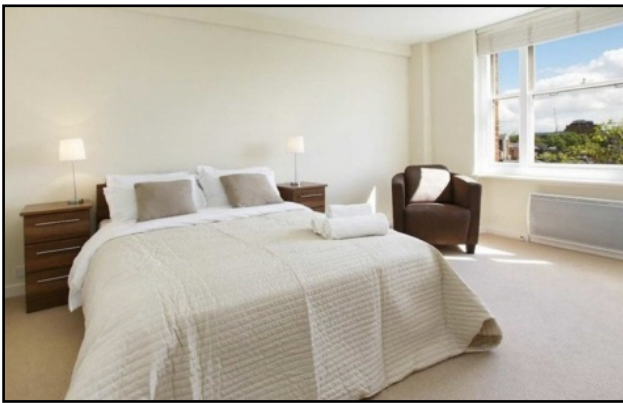
This lateral two bedroom conversion apartment is situated on the sixth floor of one of Hill Streets most prestigious addresses.

£960

Benefits

- TWO BEDROOMS
- ONE RECEPTION
- TWO BATHROOMS
- CCTV
- 24 HR PORTER
- CLOSE TO TRANSPORT

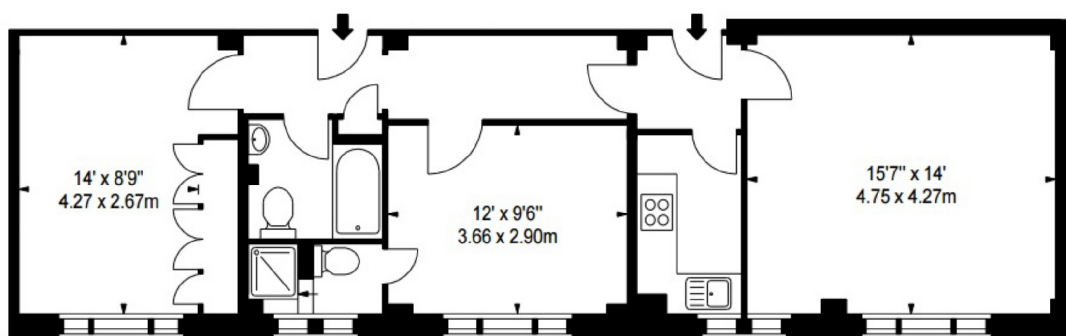




**FLAT 64-65,
39 HILL STREET, W1**

APPROX. GROSS INTERNAL AREA *
728 Ft² - 67.63 M²

ILLUSTRATION FOR IDENTIFICATION PURPOSES ONLY. NOT TO SCALE
* As Defined by RICS - Code of Measuring Practice



SIXTH FLOOR