



Boydell Court, St John's Wood Park, St John's Wood, NW8

£1,150 Per week

For further information,
please call our Park Road
Branch on 0207 586 6699

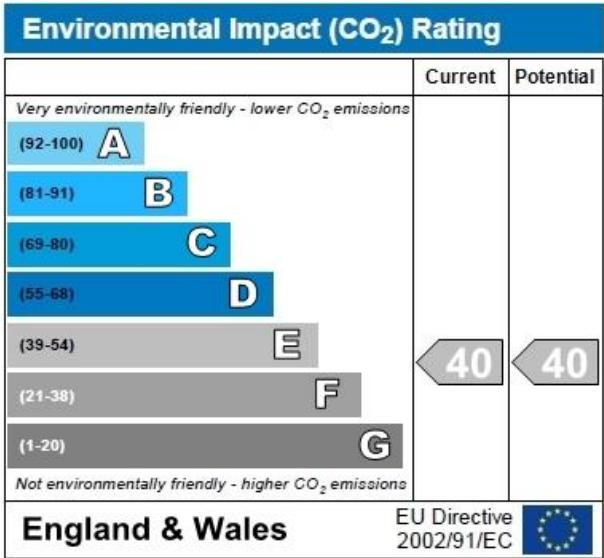
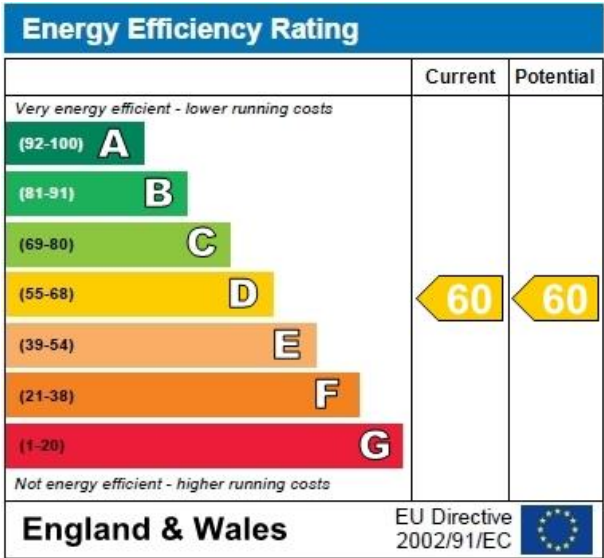
An extremely bright and airy apartment affording 3 bedroom apartment with a study room is located on the seventh floor. This secured residential block offers 24 hour portage, car parking on a first come first serve basis; communal heating and hot water. Located conveniently to Swiss Cottage tube and Finchley Road's immense shopping and transport links. Available NOW for long let

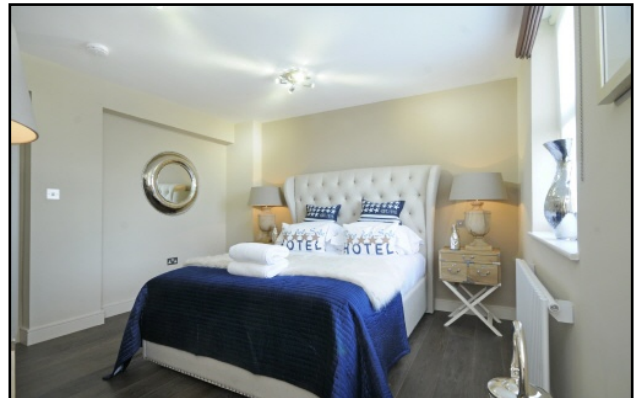
Accommodation

£1,150

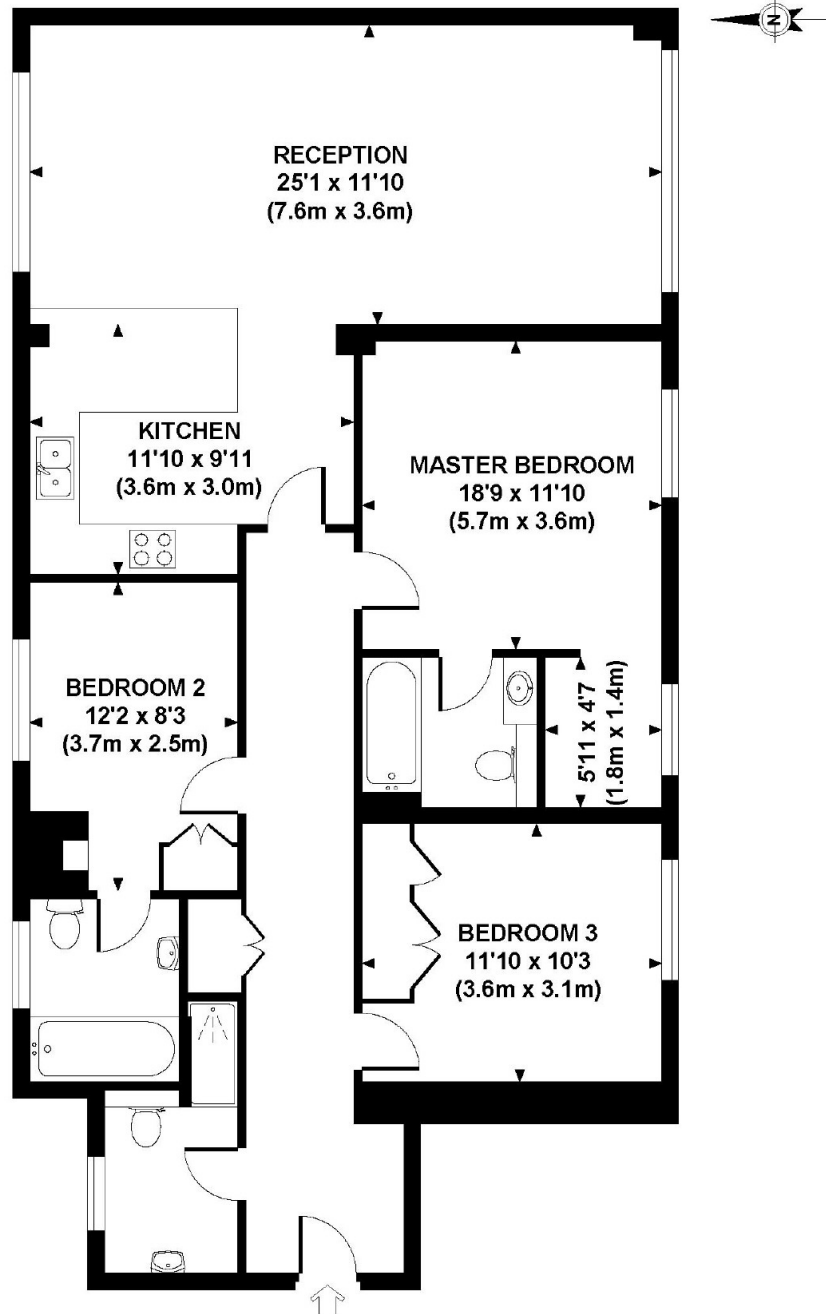
Benefits

- Double Glazing
- 24h Porter
- Car Park
- Communal Heating





**25 BOYDELL COURT
SEVENTH FLOOR**



APPROXIMATE GROSS INTERNAL FLOOR AREA 1127 SQ FT / 105 SQ M

Although every attempt has been made to ensure accuracy, all measurements are approximate.
The floor plan's for illustrative purposes only and not to scale. Measured in accordance to RICS standards.
DE-PHOTOGRAPHY.NET

You may download, store and use the material for your own personal use and research. You may not republish, retransmit, redistribute or otherwise make the material available to any party or make the same available on any website, online service or bulletin board of your own or of any other party or make the same available in hard copy or in any other media without the website owner's express prior written consent. The website owner's copyright must remain on all reproductions of material taken from this website.