



Boydell Court, St John's Wood Park, St John's Wood, NW8

£999 Per week

For further information,
please call our Park Road
Branch on 0207 586 6699

This absolutely stunning and fully air conditioned three bedroom ground floor apartment of this highly sought after apartment block.

Located on the border of St John's Wood and Swiss Cottage, within the London borough of Camden, this three bedroom property is available

NOW on a fully furnished basis with parking also available for hire. Situated just a short distance to the north west of Regents Park, there is 24 hour porterage within this gated development. Close to Swiss cottage underground station. Available NOW 6 months or longer.

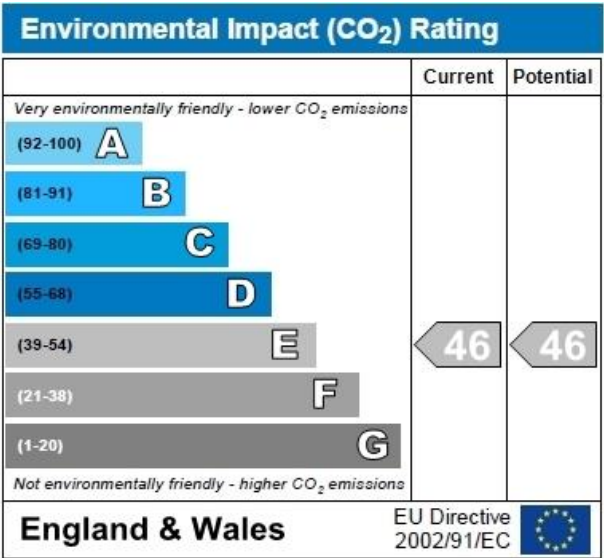
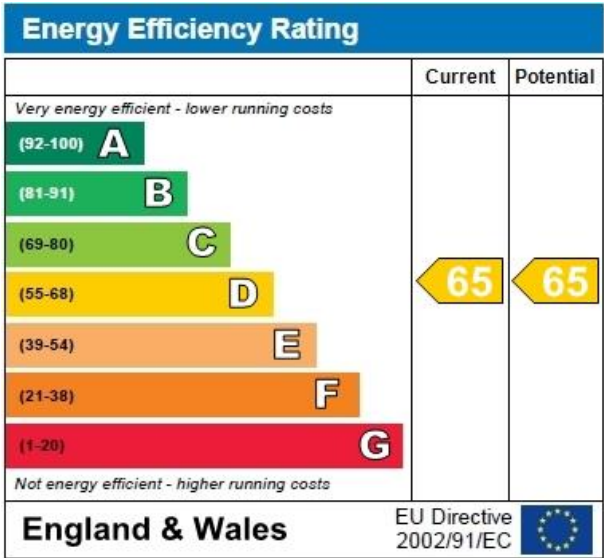
Accommodation

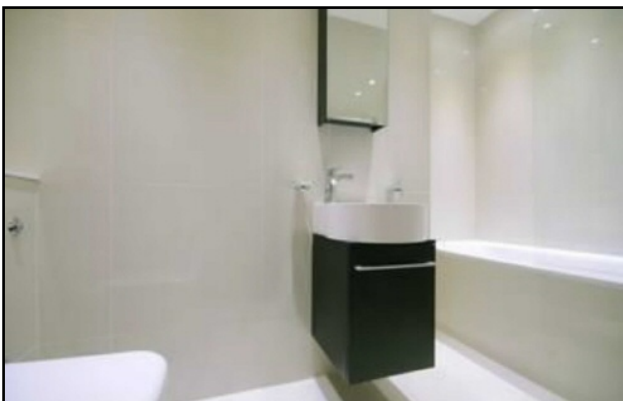
This absolutely stunning and fully air conditioned three bedroom apartment is available on the ground floor of this highly sought after apartment block.

£999

Benefits

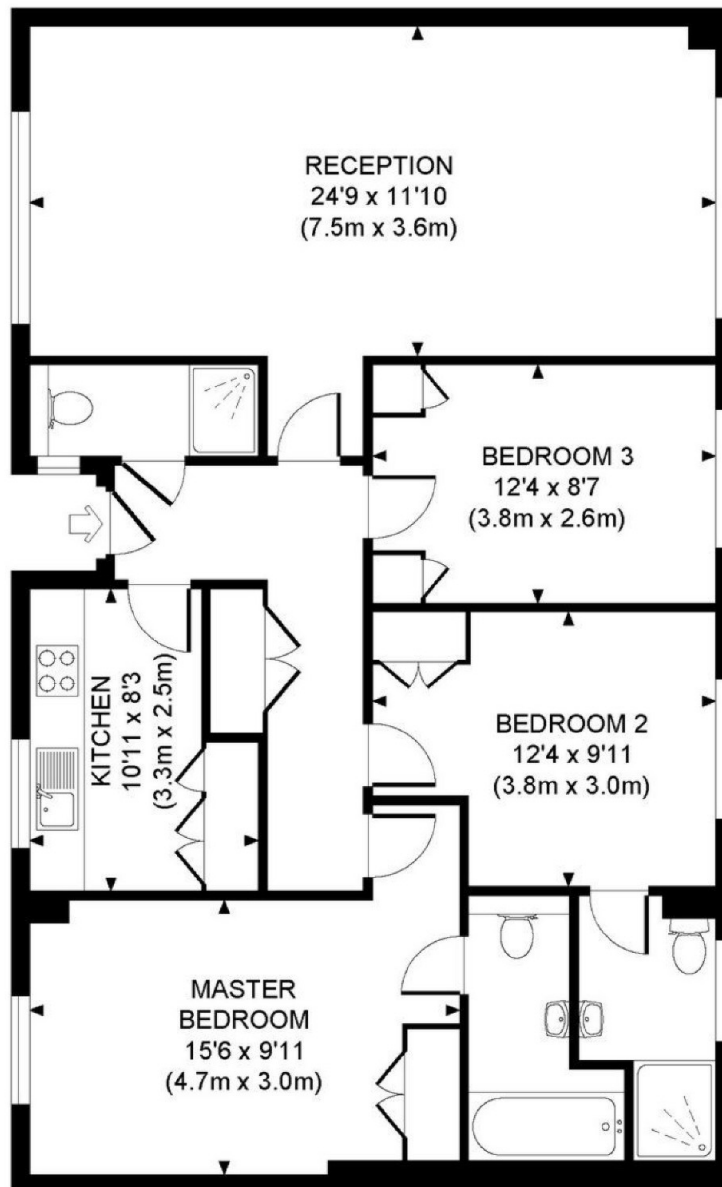
- THREE BEDROOMS
- ONE RECEPTION
- THREE BATHROOMS
- FULLY FURNISHED
- 24 HOUR PORTERAGE





BOYDELL COURT

Approximate Gross Internal Area 998 sq ft / 93 sq m



GROUND FLOOR
GROSS INTERNAL
FLOOR AREA 998 SQ FT

Although every attempt has been made to ensure accuracy, all measurements are approximate.
The floor plan's for illustrative purposes only and not to scale. Measured in accordance to RICS standards.
DE-PHOTOGRAPHY.NET

You may download, store and use the material for your own personal use and research. You may not republish, retransmit, redistribute or otherwise make the material available to any party or make the same available on any website, online service or bulletin board of your own or of any other party or make the same available in hard copy or in any other media without the website owner's express prior written consent. The website owner's copyright must remain on all reproductions of material taken from this website.