



Jefferson House, Basil Street, Knightsbridge, SW3

Asking price £725,000

For further information,
please call our Park Road
Branch on 0207 586 6699

An excellent opportunity to acquire a superb studio apartment with beautiful high ceilings situated on the first floor (with lift) in a red-brick portered mansion block. The flat is located within a minutes' walk from the world famous Harrods and is conveniently close to the Knightsbridge tube station. This would be an ideal rental investment or a Pied-a-tete for the discerning buyer.

Tenure: Leasehold (124 years remaining approx.)

Service charge (per annum): £2,953.00

Ground rent (per annum): £300

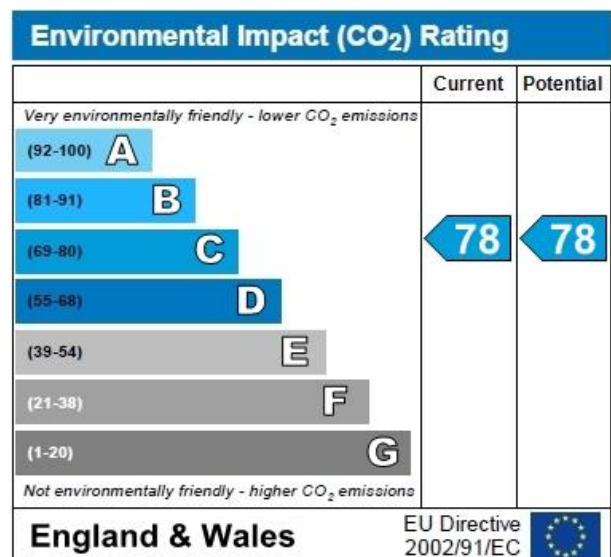
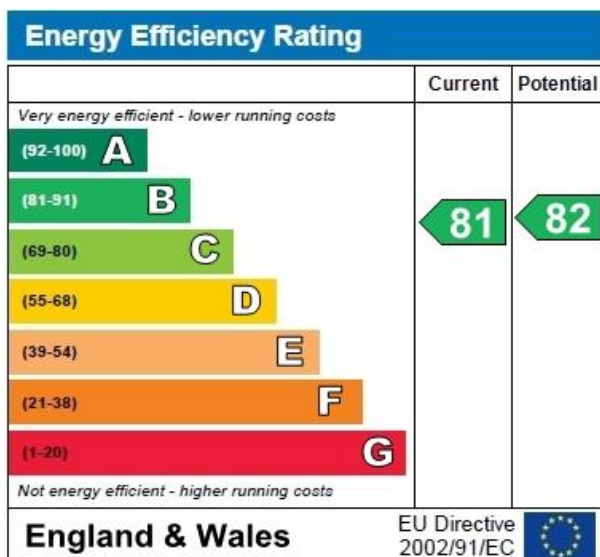
Asking price
£725,000

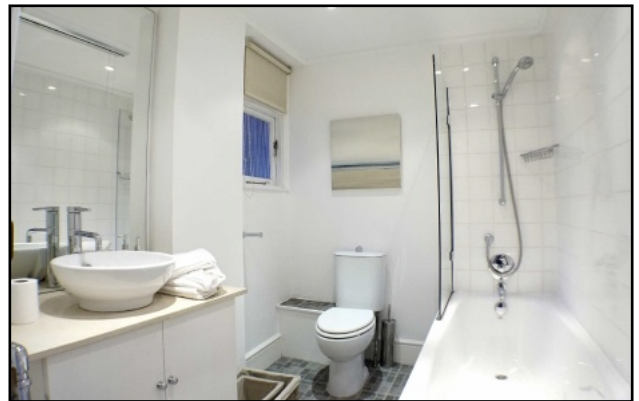
Accommodation

The property comprises of a spacious living area with a concealed kitchenette and a modern fitted bathroom with shower. The property benefits from having carpeted flooring throughout, porter desk and a lift. Communal heating and hot water are also included in the service charge

Benefits

- Superb Studio
- High ceiling
- Modern great style
- Excellent location
- Porter & Lift





Jefferson House,
Basil Street, SW3 1AX
Approximate Gross Internal Area
26.33 sq m / 283 sq ft

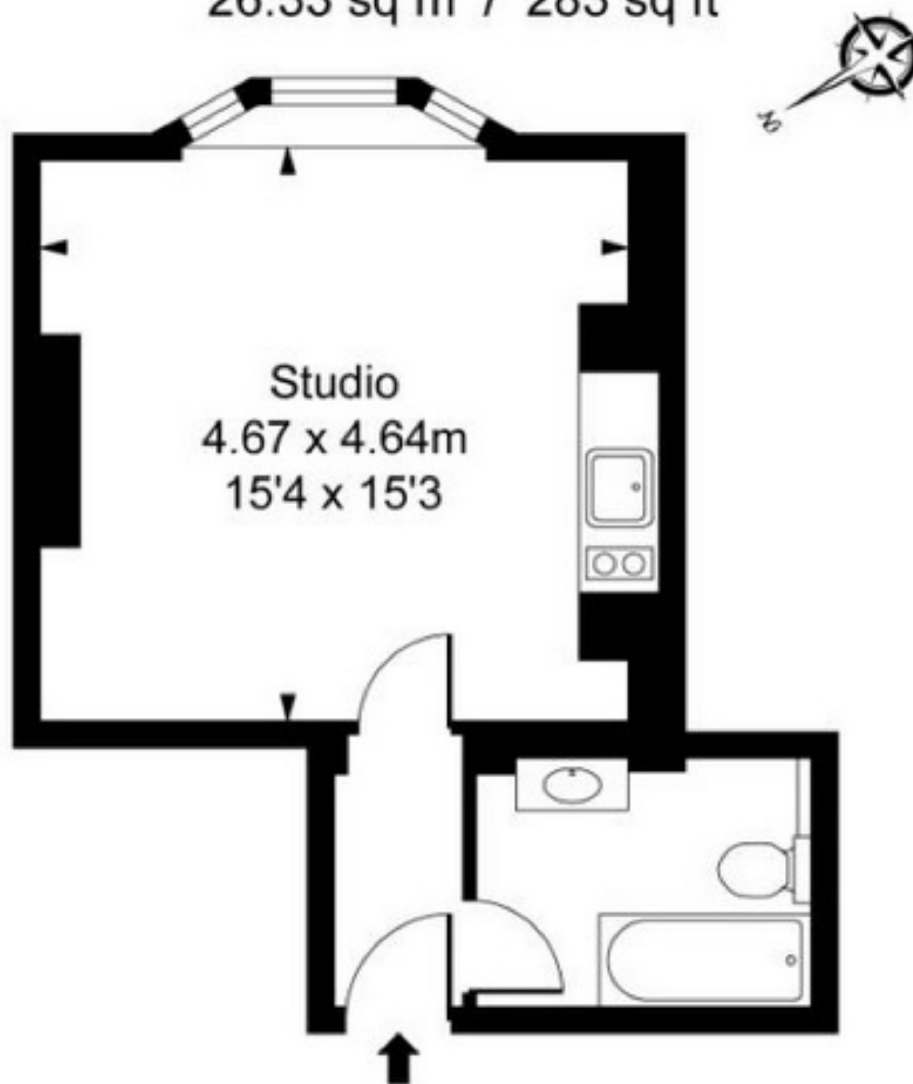


ILLUSTRATION FOR IDENTIFICATION PURPOSES ONLY
ALL MEASUREMENTS ARE MAXIMUM, AND INCLUDE WINDOW BAYS AND WARDROBES WHERE APPLICABLE
THIS PLAN MUST NOT BE REPRODUCED BY ANY OTHER PERSON WITHOUT PERMISSION

You may download, store and use the material for your own personal use and research. You may not republish, retransmit, redistribute or otherwise make the material available to any party or make the same available on any website, online service or bulletin board of your own or of any other party or make the same available in hard copy or in any other media without the website owner's express prior written consent. The website owner's copyright must remain on all reproductions of material taken from this website.