



Porchester Place, Hyde Park, Hyde Park, W2

Asking price £1,200,000

For further information,
please call our Park Road
Branch on 0207 586 6699

This is a charming two bedroom, two bathroom apartment located on third floor of a well maintained popular portered block. This apartment is in good condition throughout and is set moments away from the vibrant district of Oxford Street, it is also set in the heart of Hyde Park Estates, Porchester Place is located in the Connaught Village, just off Connaught Street which has a variety of boutiques, restaurants and cafes.

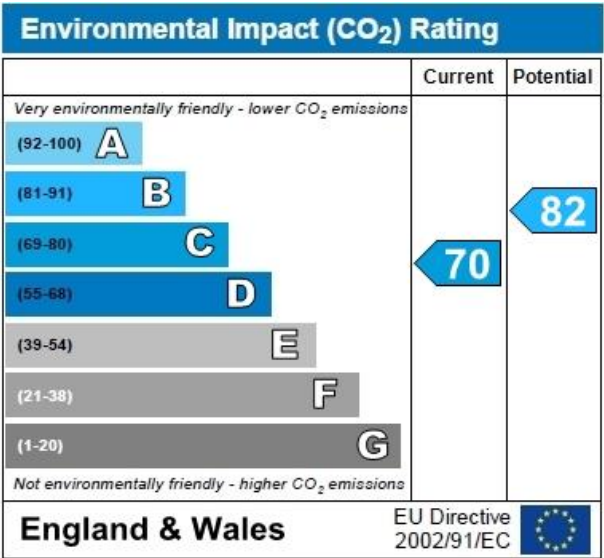
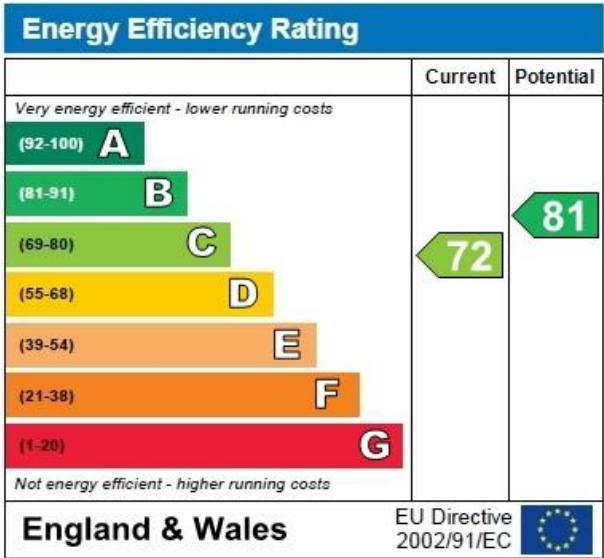
Accommodation

This is a charming two bedroom, two bathroom apartment located on third floor of a well maintained popular portered block.

Asking price
£1,200,000

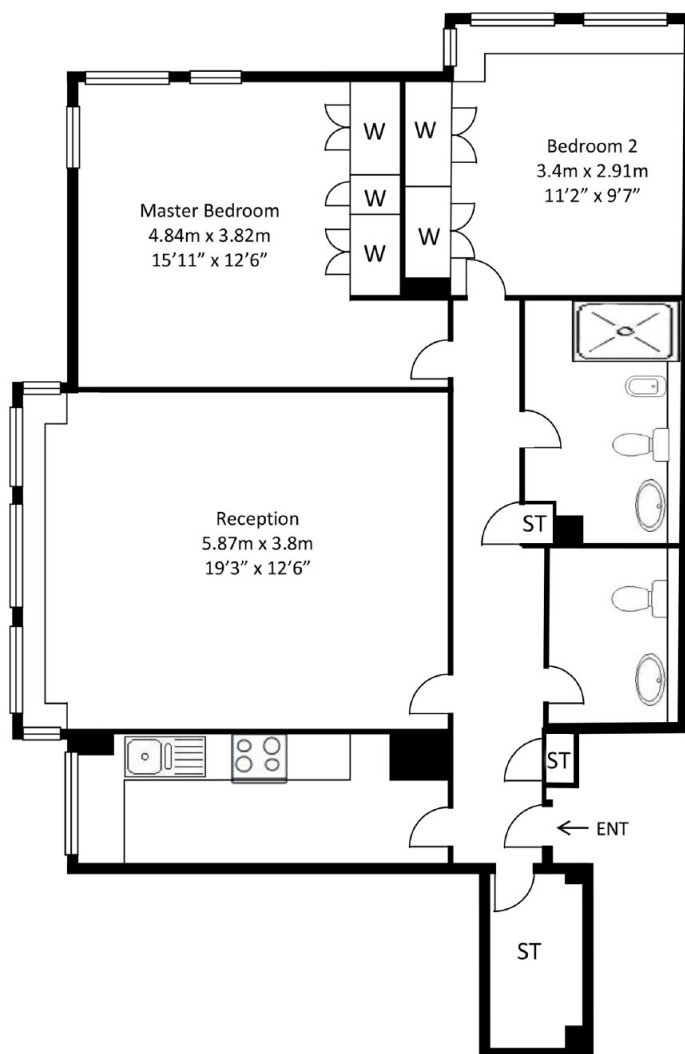
Benefits

- two bedroom
- two bathrooms
- third floor
- portered block
- close to oxford street





APPROX FLOOR AREA: 871 Sq Ft / 81 Sq M



3rd FLOOR

The Floor-plans are for representation purposes only and should be used as such by any prospective client

