



Porchester Place, Hyde Park, W2

£725 Per week

For further information,
please call our Park Road
Branch on 0207 586 6699

A brand newly refurbished two double bedroom bright apartment (2 showers/WC) with delightful views right across the city. Located on the 17th floor with superb London skyline, this is an extremely well maintained portered block with lifts in Connaught Village, Hyde Park.. Offering modern open plan fitted kitchen and reception with ample storage. The property is found just moments away from the vibrant shopping district of March Arch, Oxford Street, Hyde Park and Paddington. Marble Arch underground station is within close proximity. This excellent flat is available from the 5th May and is offered furnished for long let.

Tenure

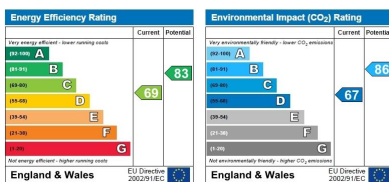
Accommodation

Large 17th floor flat in portered block close to March Arch, Hyde Park and all local amenities. The property has been newly refurbished.

£725

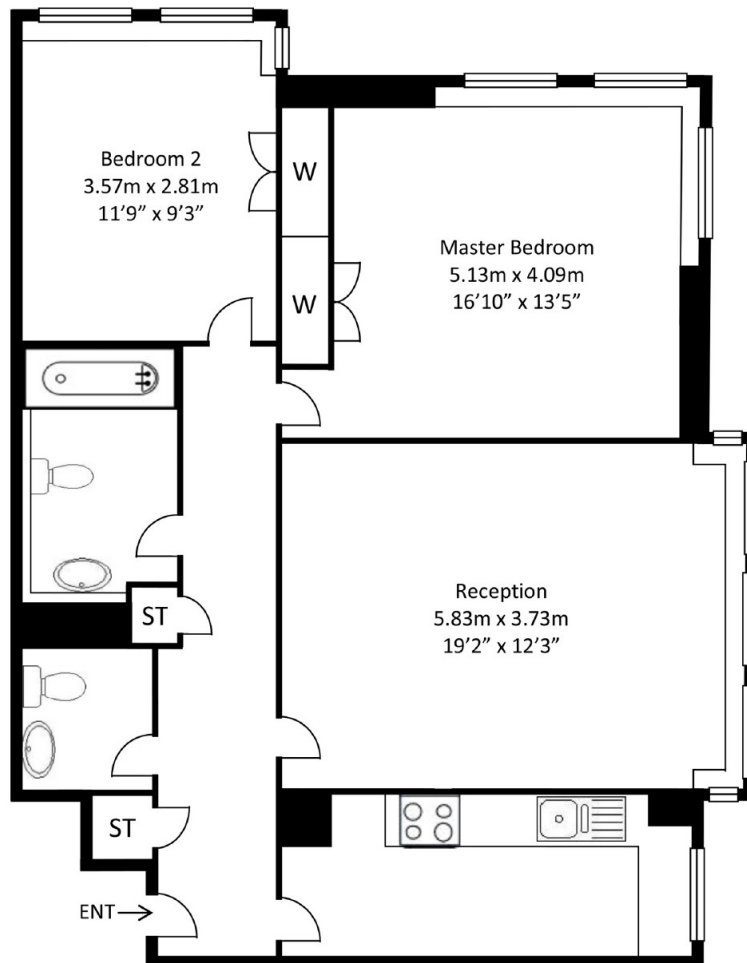
Benefits

- Two bedrooms
- Large reception
- Modern Kitchen
- 2 shower/wc
- Lifts and porters
- Great location





APPROX FLOOR AREA: 828 Sq Ft / 77 Sq M



17th FLOOR

The Floor-plans are for representation purposes only and should be used as such by any prospective client



You may download, store and use the material for your own personal use and research. You may not republish, retransmit, redistribute or otherwise make the material available to any party or make the same available on any website, online service or bulletin board of your own or of any other party or make the same available in hard copy or in any other media without the website owner's express prior written consent. The website owner's copyright must remain on all reproductions of material taken from this website.