



Lyndhurst Court, Finchley Road, St Johns Wood, NW8

£345 Per week

Leasehold

For further information,
please call our Park Road
Branch on 0207 586 6699

A bright and spacious modernised studio flat situated on the ninth floor (with lift access) of this well secured residential building just moments from St John's Wood Underground station (Jubilee Line). The property benefits include wooden flooring throughout, a stylish newly fitted kitchen, modern shower/WC, full range of fitted wardrobe and large windows with excellent views with westerly aspect & communal gardens. There is a porter and secure private parking is also included. The property has been newly redecorated and is offered furnished and is available immediately.

Heating, hot water, plus Thames Water are included in Rental Price,.

Available NOW for long let only.

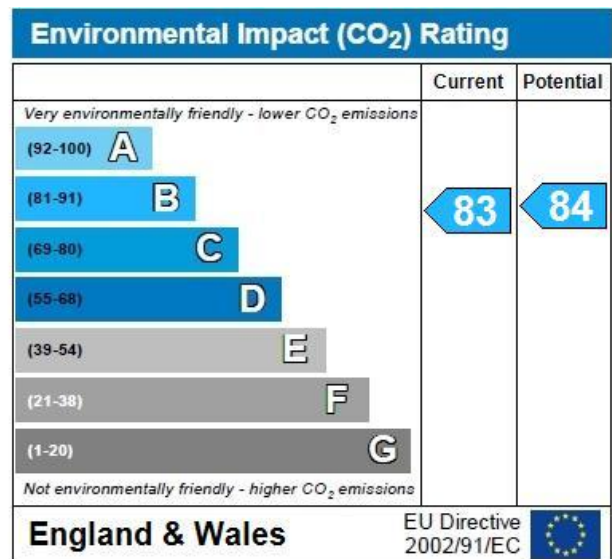
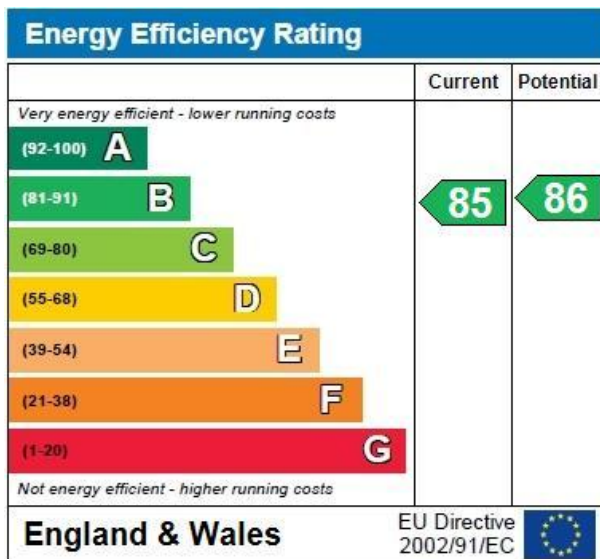
Accommodation

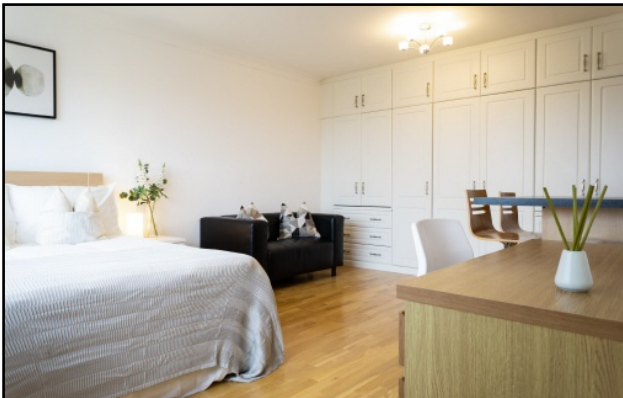
A spacious and bright luxury studio flat on the ninth floor (lift) of this well secured purpose built block moments walk to St John's Wood Station,

£345

Benefits

- Studio Flat
- Reception/Dining Room
- Wood flooring
- Modern Fully Fitted Kitchen
- Communal heating & HW
- Porter
- Secure Parking
- Communal Gardens





You may download, store and use the material for your own personal use and research. You may not republish, retransmit, redistribute or otherwise make the material available to any party or make the same available on any website, online service or bulletin board of your own or of any other party or make the same available in hard copy or in any other media without the website owner's express prior written consent. The website owner's copyright must remain on all reproductions of material taken from this website.