



The Tower, Chelsea, Chelsea Creek, SW6

£950 Per week

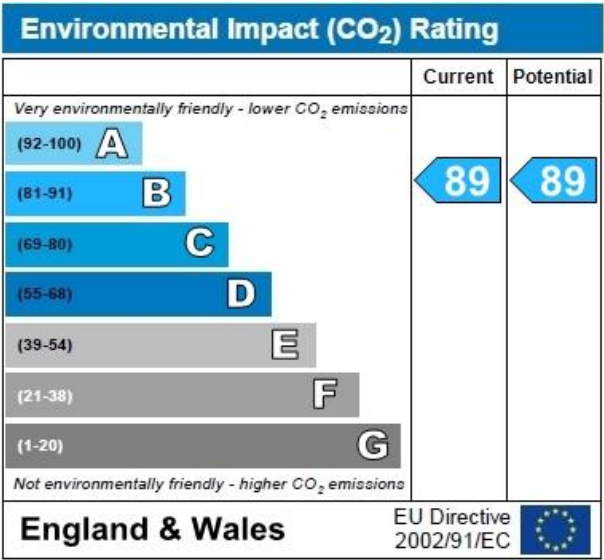
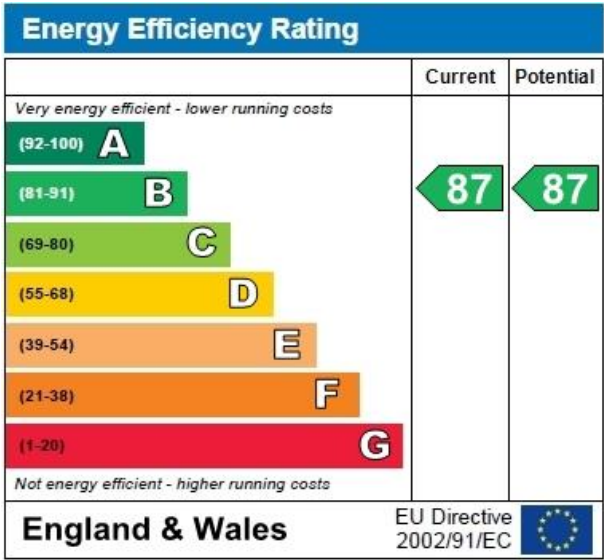
For further information,
please call our Park Road
Branch on 0207 586 6699

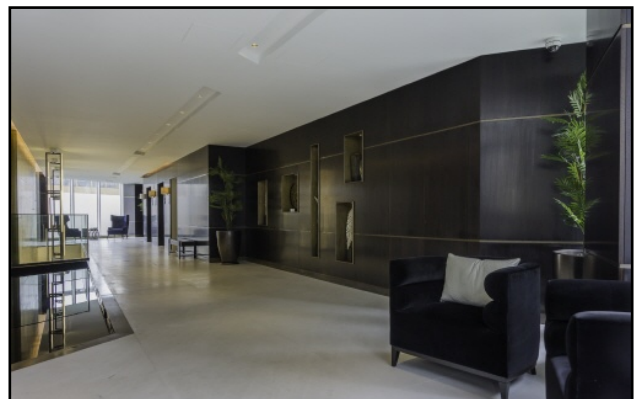
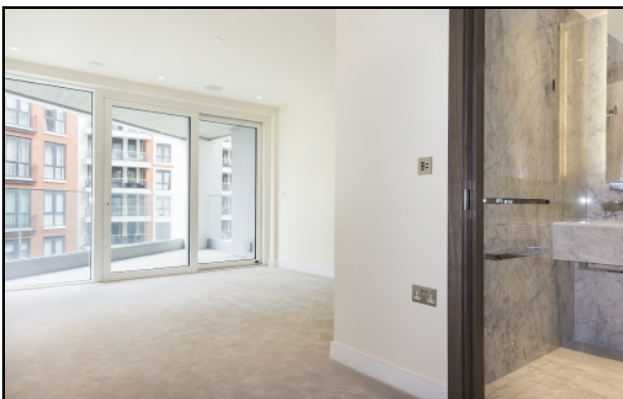
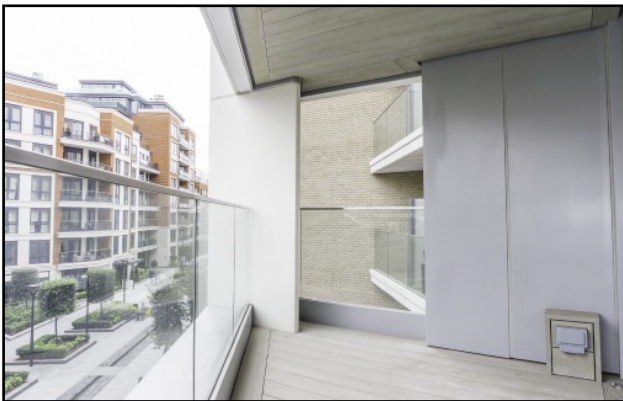
This is wonderfully bright and spacious two double bedroom apartment located on the second floor with a large private terrace. The Tower is situated within the landscaped gardens of Chelsea Creek, one of London's latest riverside development's. The property comprises of: - Entrance Hallway, large open plan reception room leading out onto a private terrace, sleek fitted kitchen, two excellent sized double bedrooms, each with fitted wardrobes, master has an en-suite bathroom, second family bathroom. The property also comes with secured parking space. The property also benefits from having 24 hour concierge, gym facilities, close proximity to Imperial Wharf station which is less than 5 minutes walk away. The property is offered

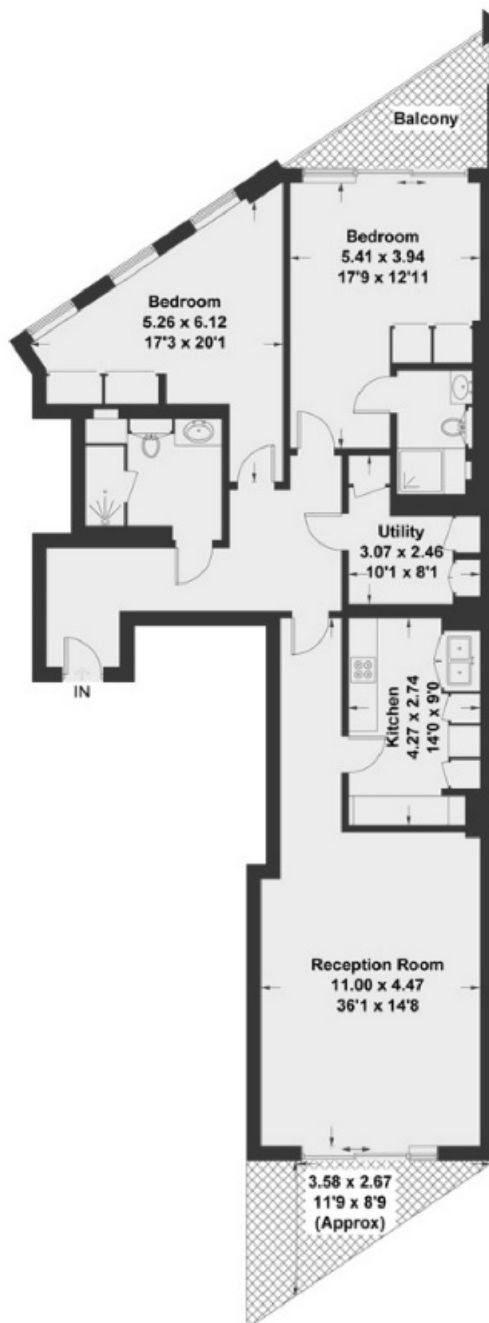
Accommodation

£950

Benefits







Second Floor

Chelsea Creek

Approximate Gross Internal Area = 118.8 sq m / 1279 sq ft

Illustration for Identification Purpose Only. Not to Scale.

You may download, store and use the material for your own personal use and research. You may not republish, retransmit, redistribute or otherwise make the material available to any party or make the same available on any website, online service or bulletin board of your own or of any other party or make the same available in hard copy or in any other media without the website owner's express prior written consent. The website owner's copyright must remain on all reproductions of material taken from this website.