



Porchester Place, Marble Arch, W2

£460 Per week

For further information,  
please call our Park Road  
Branch on 0207 586 6699

This recently repainted one bedroom apartment has one of the most far reaching views over Hyde Park and the City!

Located on the 14th floor in a recently refurbished residential building, close to Hyde Park, Marble Arch and Oxford Street. The property comprises of: - entrance hallway with storage cupboards, extremely bright reception room with open plan fitted kitchen (new cooker installed)r, stunning uninterrupted views, large double bedroom with walk-in dressing room, bathroom/wc. The property also benefits from having with 24 hour portorage, lifts access, secure entry phone, newly fitted carpets and available furnished. The property is available NOW for 6 months or longer .

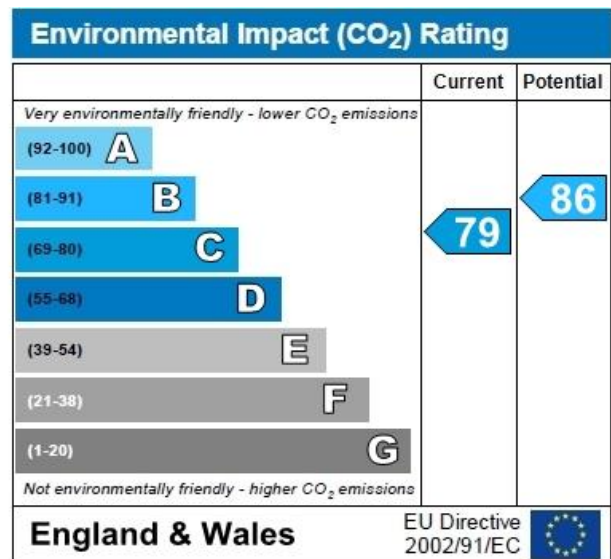
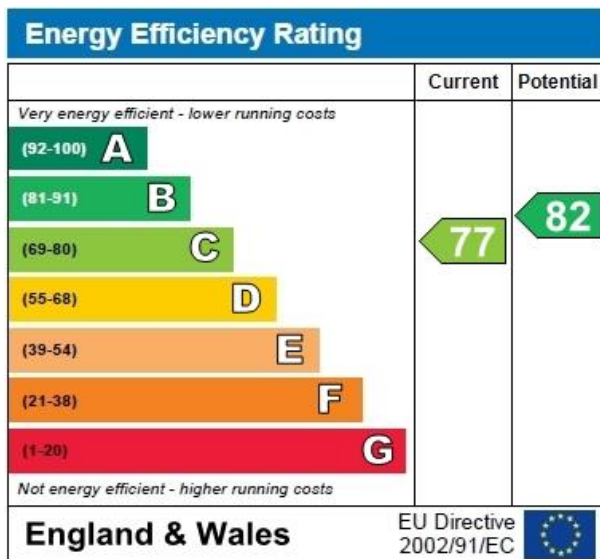
## Accommodation

This one bedroom apartment has one of the most stunning views over Hyde Park, March Arch and the City! Located on the 14th floor in the smart residential building

£460

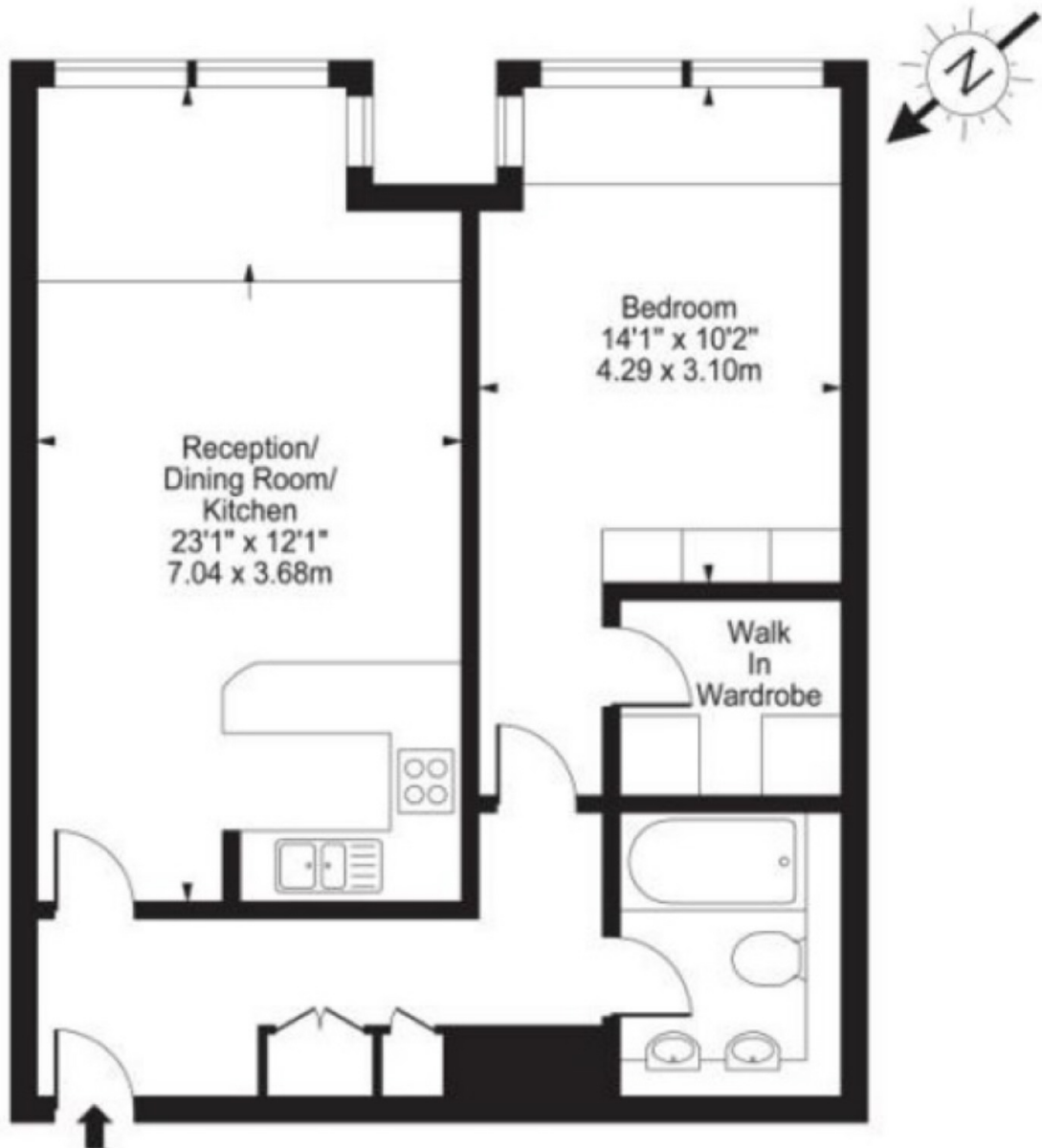
## Benefits

- Spacious reception/kitchen with newly installed cooker
- Large One Double Bedroom
- Newly fitted carpets
- Newly repainted
- 14th Floor
- Stunning Views
- 24 Hour Porter
- Great location and views





Approx. Gross Internal Area 621 Sq Ft - 57.69 Sq M



Fourteenth Floor