



Porchester Place, Hyde Park, Hyde Park, W2

Asking price £1,250,000

Leasehold

For further information,
please call our Park Road
Branch on 0207 586 6699

A two bedroom two bathroom newly refurbished apartment offering spacious modern open plan kitchen and reception, located on the 17th floor with superb London skyline, this is a well maintained portered block in Connaught Village. The property is found just moments away from the vibrant shopping district of Oxford Street and Hyde Park. Marble Arch underground station is within close proximity. Viewing is highly recommended.

Service Charge:- £8000 (approx to include heating, hot water and sinking funds)

Ground Rent:- £400 per annum

Years remaining on the lease:- 160

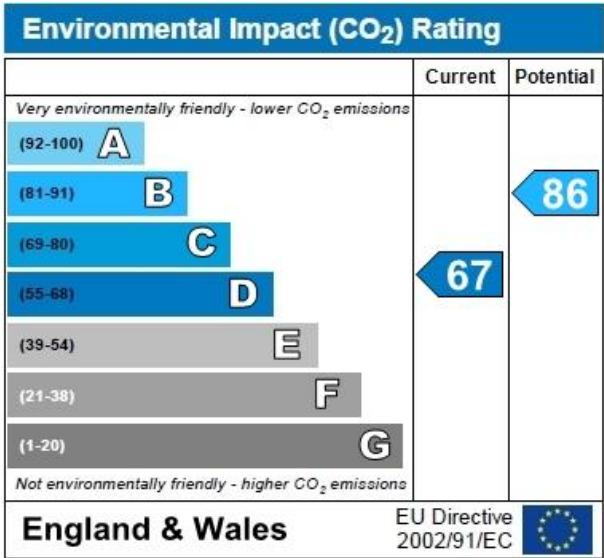
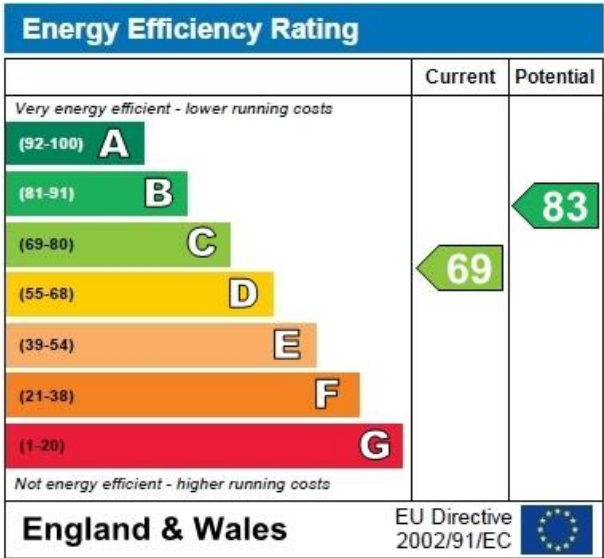
Accommodation

Large 17th floor flat in smart portered block close to March Arch, Hyde Park and all local amenities. The property has been refurbished to high standard.

Asking price
£1,250,000

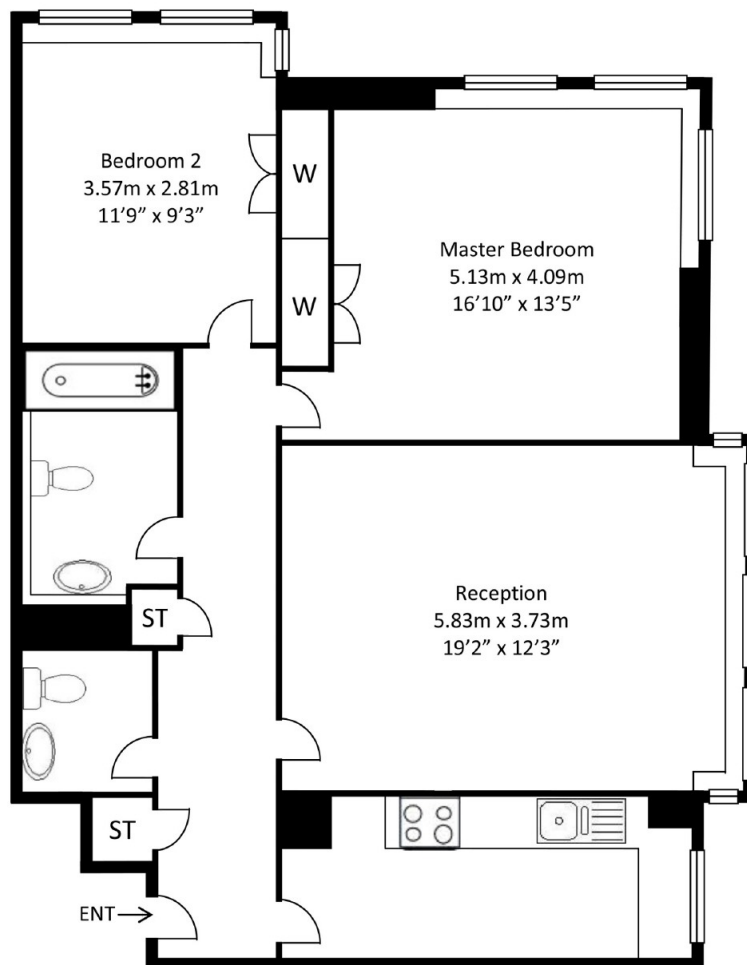
Benefits

- Two bedrooms
- Large reception
- Modern Kitchen
- Showe/wc x2
- Lifts and porters
- Great location





APPROX FLOOR AREA: 828 Sq Ft / 77 Sq M



17th FLOOR

The Floor-plans are for representation purposes only and should be used as such by any prospective client

