



Cumberland Mansions, Seymour Place, Marylebone, W1H

Asking price £1,975,000

Leasehold

For further information,
please call our Park Road
Branch on 0207 586 6699

A bright and spacious three double bedroom apartment with high ceilings covering almost 1406 sq/ft of the fourth floor in a traditional red brick mansion block moments from Oxford Street and Marylebone Station. The property comprises of: - Excellent sized reception room, large breakfast kitchen, separate dining room, three double bedrooms, three en-suite bathrooms and guest WC. The property also benefits from having wooden flooring throughout, neutral freshly decorated walls, day porter, lift access, easy access to all of the shops and transport.

Tenure: -Leasehold Years Remaining: - 110

Service Charge: - £3947 Per Annum Ground rent : Peppercom

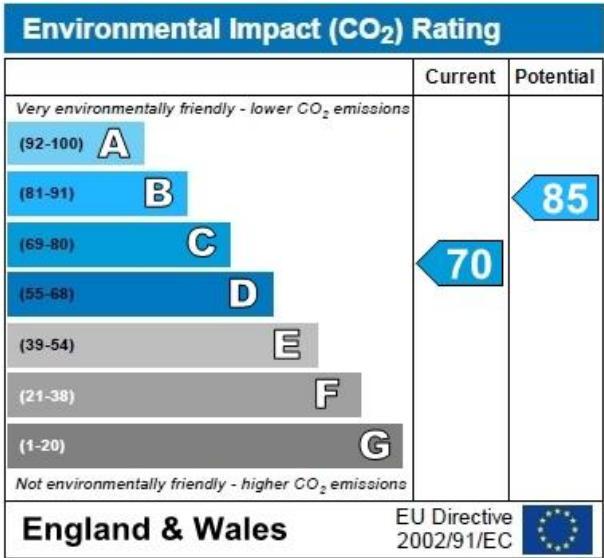
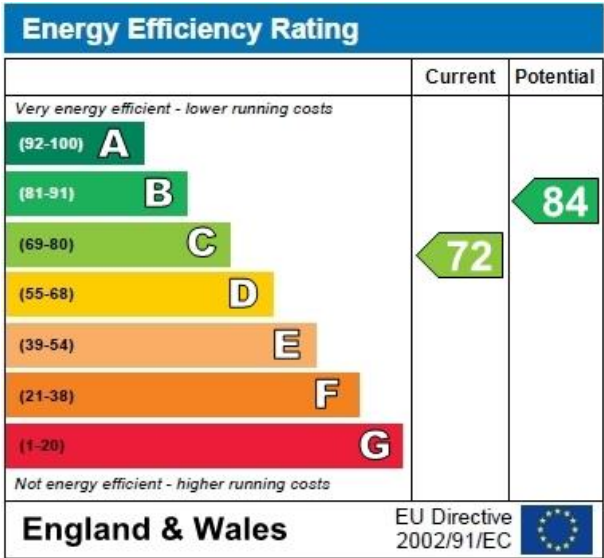
Accommodation

A bright and spacious three double bedroom apartment on the fourth floor of a traditional red brick mansion block moments from Oxford Street.

Asking price
£1,975,000

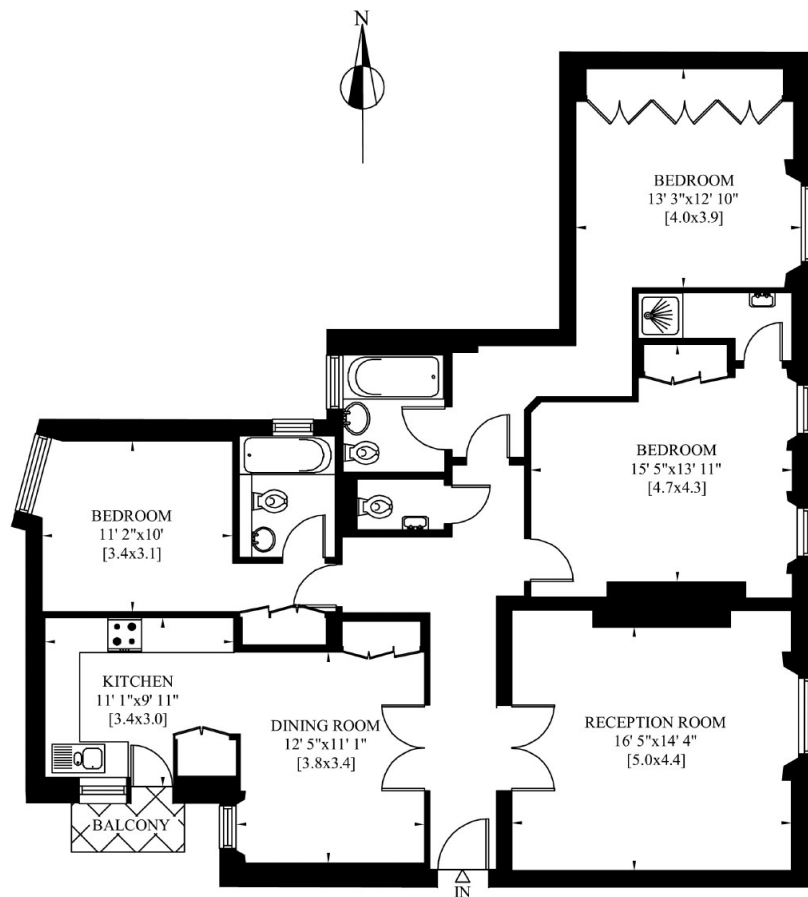
Benefits

- Three Double Bedrooms
- Three Bathrooms (en-suite)
- Guest WC
- Fourth Floor
- Lift
- Wooden Flooring
- Freshly decorated



CUMBERLAND MANSIONS
SEYMOUR PLACE
LONDON W1

Gross Internal Area: 131 Sq. metres
1406 Sq. feet



FOURTH FLOOR