

Green Street Green

3 Brittenden Parade
Green Street Green, Orpington
Kent BR6 6DD

T: 01689 850136

E: greenstgreen@edmund.co.uk



Offices also at:

Bromley South/Park Langley
T: 020 8464 3030

Orpington
T: 01689 821904

Petts Wood
T: 01689 819991

Lettings
T: 01689 850983



16 Pitt Road, Farnborough, Kent, BR6 7EB

£360,000

Situated in a cul de sac in the heart of Farnborough Village is this two bedroom mid terrace cottage offered with immediate vacant possession therefore cutting out those potentially problematical chains. Accommodation comprises to the ground floor entrance porch, through lounge/diner and kitchen. To the first floor are two bedrooms and a shower room. Outside, there is a small garden to the front and to the rear a garden of approximately 45'. Farnborough Village is a sought after location with local shops and bus routes servicing Orpington and Bromley as well as a distinct village feel with its lovely walks into adjacent open countryside.

- Sought after location
- Terraced house
- Two bedrooms
- Rear garden approximately 45ft
- Part double glazing
- Shower room
- No chain
- Cul de sac
- Large reception area
- Convenient for shops and bus routes

ACCOMMODATION

GROUND FLOOR

ENTRANCE PORCH

Double glazed entrance porch, vinyl flooring.

LOUNGE AREA

11' 1" x 11' 9" (3.38m x 3.58m) Double glazed window to front, radiator, power points, wall light points, stairs to first floor.

DINING AREA

11' 1" x 13' 3" (3.38m x 4.04m) Single glazed window to rear, radiator, power points, T.V point.

KITCHEN

11' 3" x 6' 4" (3.43m x 1.93m) Single glazed window to side, single glazed window to rear, single glazed door to side, range of fitted wall and base units, radiator, single bowl stainless steel sink with mixer tap, fridge/freezer to remain, electric hob with oven under, local tiling to walls.

FIRST FLOOR

LANDING

Access to loft, airing cupboard housing hot water cylinder.

BEDROOM 1

11' 2" x 10' 2" (3.4m x 3.1m) Single glazed window to rear, power points, built in cupboard.

BEDROOM 2

11' 1" x 6' 7" (3.38m x 2.01m) Double glazed window to front, power points.

SHOWER ROOM

Fully tiled shower cubicle, vanity wash hand basin with mixer tap, low level w.c, tiling to walls.

TO THE OUTSIDE

TO FRONT

Small garden area.

REAR GARDEN

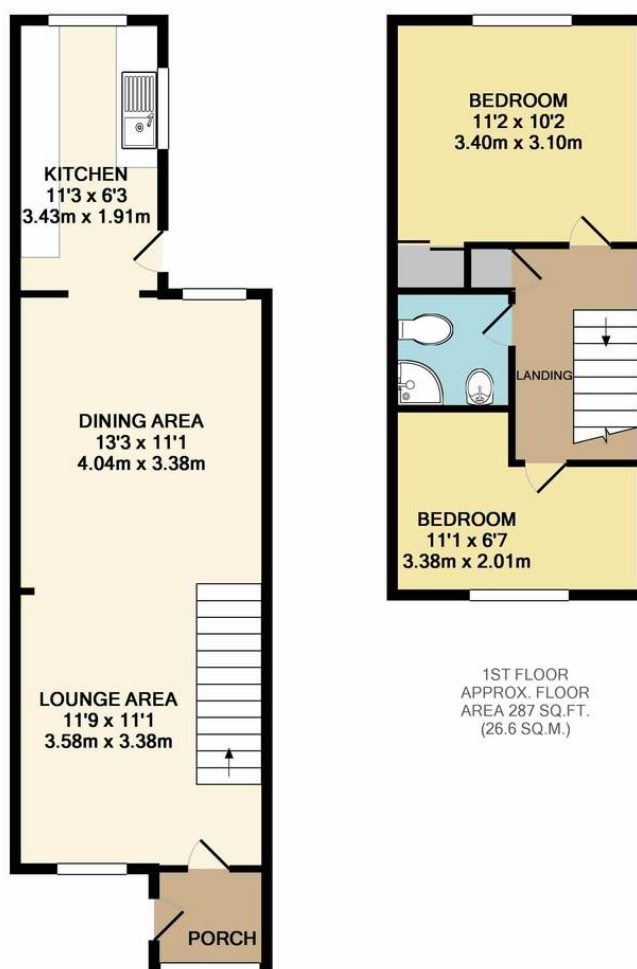
Approximately 45' (13.72m) Mainly laid to lawn, enclosed.

LOCAL AUTHORITY: London Borough of Bromley

COUNCIL TAX BAND: C

DIRECTIONS: From our office at Green Street Green proceed up Farnborough Hill, at the roundabout take the second exit continuing into Farnborough Hill. Take the 4th turning on the right into Gladstone Road and Pitt Road is on the left hand side.

VIEWING: By appointment with Edmund Green Street Green 01689 850136



GROUND FLOOR
APPROX. FLOOR
AREA 389 SQ.FT.
(36.1 SQ.M.)

TOTAL APPROX. FLOOR AREA 676 SQ.FT. (62.8 SQ.M.)

Whilst every attempt has been made to ensure the accuracy of the floor plan contained here, measurements of doors, windows, rooms and any other items are approximate and no responsibility is taken for any error, omission, or mis-statement. This plan is for illustrative purposes only and should be used as such by any prospective purchaser. The services, systems and appliances shown have not been tested and no guarantee as to their operability or efficiency can be given

Made with Metropix ©2018

