



**Boydell Court, St Johns Wood Park, St Johns
Wood, London, NW8**

£1,100 per week + fees

Boydell Court, St Johns Wood Park, St Johns Wood, London, NW8

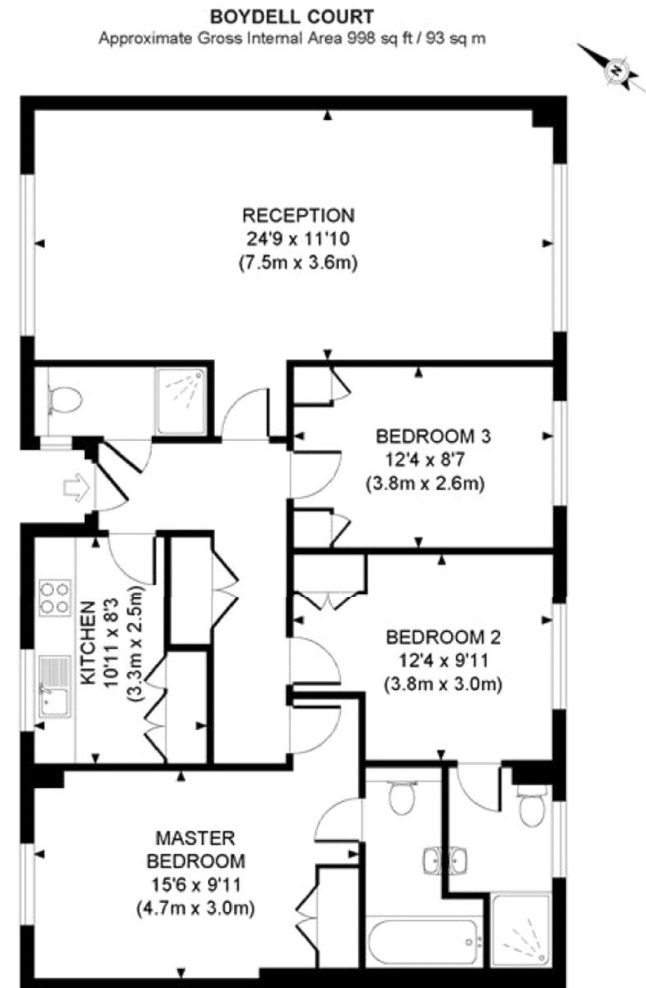
A beautifully refurbished three bedroom, three bathroom flat with an excellent kitchen and bathrooms and wooden floors, on the ground floor of this prestigious purpose built block with excellent security, just minutes from Swiss Cottage tube station and within easy walking distance of St John's Wood High Street.

3 Bedrooms : 3 Bathrooms : 1 Reception Room : Kitchen : 24 Hour Porter : Lift : Communal Garden : Parking

Local Authority: Camden

Council Tax Band: F

- 3 Bedrooms
- 3 Bathrooms
- 1 Reception Room
- Kitchen
- 24 Hour Porter
- Lift
- Communal Garden
- Parking



GROUND FLOOR
GROSS INTERNAL
FLOOR AREA 998 SQ FT

Although every attempt has been made to ensure accuracy, all measurements are approximate.
The floor plan's for illustrative purposes only and not to scale. Measured in accordance to RICS standards.
DE-PHOTOGRAPHY.NET





Energy Efficiency Rating	
Current	Potential
Very energy efficient - lower running costs	
(92-100) A	
(81-91) B	
(69-80) C	
(55-68) D	
(39-54) E	
(21-38) F	
(1-20) G	
Not energy efficient - higher running costs	
65	65
England & Wales	
EU Directive 2002/91/EC	

Environmental Impact (CO ₂) Rating	
Current	Potential
Very environmentally friendly - lower CO ₂ emissions	
(92-100) A	
(81-91) B	
(69-80) C	
(55-68) D	
(39-54) E	
(21-38) F	
(1-20) G	
Not environmentally friendly - higher CO ₂ emissions	
46	46
England & Wales	
EU Directive 2002/91/EC	

Laurence Leigh Residential

60 Queens Grove
St Johns Wood
NW8 6ER

T: 020 7483 0101

E: info@laurenceleigh.com

www.laurenceleigh.com

Company Registered Number: 6304836.

Registered Office Address 40 Queen Anne Street, London, W1 9EL, England

Disclaimer

Every attempt has been made to ensure accuracy, however these property particulars are approximate and for illustrative purposes only. They have been prepared in good faith and they are not intended to constitute part of an offer of contract. We have not carried out a structural survey and the services, appliances and specific fittings have not been tested. All photographs, measurements, floor plans and distances referred to are given as a guide only and should not be relied upon for the purchase of any fixture or fittings. Lease details, service charges and ground rent (where applicable) are given as a guide only and should be checked prior to agreeing a sale.