

PENNY & SINCLAIR



46 Hurst Street, Oxford, OX4 1HD

INVESTMENT OPPORTUNITY: A seven bedroom Victorian house situated in this popular East Oxford side. The property is let from Summer 2018 for twelve months with the rent set at £4095 pm.

Guide Price £745,000

1-4 The Plain, St Clements,
Oxford, OX4 1AS

www.pennyandsinclair.co.uk
city.sales@pennyandsinclair.co.uk

Tel: 01865 297555

DESCRIPTION

INVESTMENT OPPORTUNITY: A seven bedroom Victorian house situated in this popular East Oxford side. The property is let from Summer 2018 for twelve months with the rent set at £4095 pm. Comprises, entrance hall, three ground floor bedrooms, kitchen/dining room and two shower rooms. The first floor comprises four further bedrooms and a WC. There is a private south west facing rear garden.

LOCATION

Hurst Street is a residential road found off Magdalen Road, a highly sociable and cultural location with many popular bars and restaurants including the Magdalen Arms and Rusty Bicycle. The Pegasus Theatre is nearby and within easy reach of Oxford Brookes and the city centre.

DIRECTION

From The Plain, proceed along the Iffley Road. Turn left into Magdalen Road. Take the first turning on the left in Hurst Street. The property will be found on the left hand side.

VIEWING ARRANGEMENTS

Strictly by appointment with Penny & Sinclair. Prior to making an appointment to view, Penny & Sinclair strongly recommend that you discuss any particular points which are likely to affect your interest in the property with a member of Penny & Sinclair's staff who has seen the property, in order that you do not make a wasted journey.

FIXTURES & FITTINGS

Certain items may be available by separate negotiation with Penny & Sinclair.

SERVICES

All main services are connected.

TENURE & POSSESSION

The property is Freehold and being sold as an on going investment.

LOCAL AUTHORITY & COUNCIL TAX

Oxford City Council

Town Hall

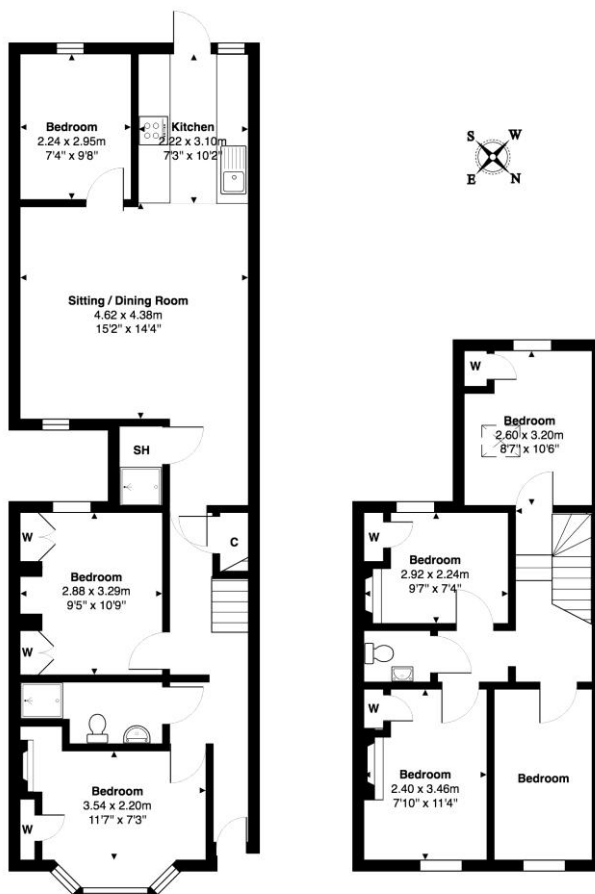
St Aldates

Oxford

OX1 1BX

Telephone (01865) 249811

Council Tax Band D £1808.45 for 2017/18



Approx. Gross Internal Area 113.6 m² ... 1223 ft²

Whilst every attempt has been made to ensure the accuracy of the floor plan contained here, measurements of doors, windows, rooms, and any other items are approximate. No responsibility is taken for any error, omission, or mis-statement. This plan is for illustrative purpose only and should be used as such.
Drawn by EB Property Services. www.ebps.co.uk