



Eastwood

Wall Hall Drive, Aldenham, WD25

- 2 Bedrooms
- 2 Bathrooms (1 En Suite)
- Living/Dining Room
- Kitchen/Breakfast Room
- Secure Underground Parking
- Communal Gardens
- Elevator
- Parkland Setting

Offers in Excess of
£590,000



T: 01923 537 111



A luxury TWO BEDROOM TWO BATHROOM TOP FLOOR APARTMENT situated on the highly sought after WALL HALL DEVELOPMENT in Aldenham. Built approximately nine years ago by Master Builders Octagon and sitting in 55 acres of surrounding parkland, the property benefits from secure underground parking for two vehicles and brick built storage cupboard, elevator and communal facilities which include landscaped communal gardens, tennis court, gymnasium, playground and Italian gardens. The accommodation further comprises: Living/dining room, fitted kitchen/breakfast room, master bedroom with en suite, bedroom two and family bathroom and has been well maintained by the current owners. This property is being offered CHAIN FREE WITH VACANT POSSESSION.

ENTRANCE HALL

KITCHEN/BREAKFAST ROOM

14' 4" x 8' 9" (4.37m x 2.67m)

LIVING/DINING ROOM

22' 5" x 12' 9" (6.83m x 3.89m)

BEDROOM ONE

16' 4" x 10' 9" (4.98m x 3.28m)

EN SUITE

10' 5" x 5' 10" (3.18m x 1.78m)

BEDROOM TWO

10' 6" x 8' 9" (3.2m x 2.67m)

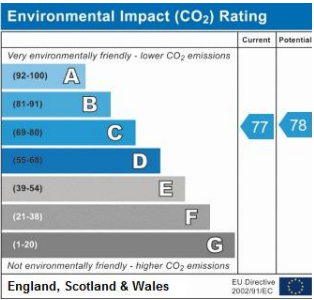
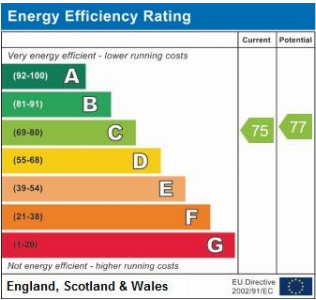
FAMILY BATHROOM

6' 8" x 5' 11" (2.03m x 1.8m)

SECURE UNDERGROUND PARKING

Allocated parking spaces for two cars.

STORAGE SHED



COUNCIL TAX BAND

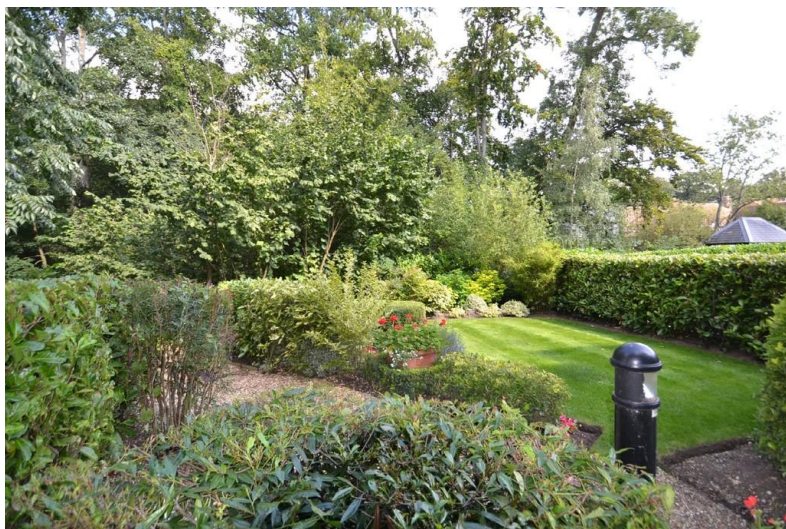
Tax band G

TENURE

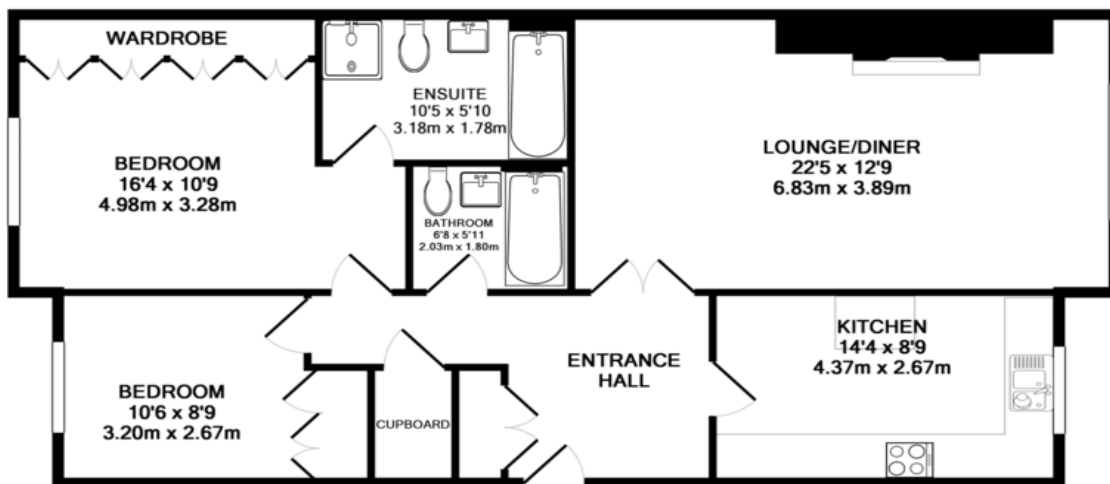
Leasehold

LOCAL AUTHORITY

Hertsmere Borough Council



UNDERGROUND
STORAGE



TOTAL APPROX. FLOOR AREA 955 SQ.FT. (88.7 SQ.M.)

Whilst every attempt has been made to ensure the accuracy of the floor plan contained here, measurements of doors, windows, rooms and any other items are approximate and no responsibility is taken for any error, omission, or mis-statement. This plan is for illustrative purposes only and should be used as such by any prospective purchaser. The services, systems and appliances shown have not been tested and no guarantee as to their operability or efficiency can be given

Made with Metropix ©2012

OFFICE

54 Watling Street
Radlett
Hertfordshire
WD7 7NN

T: 01923 537 111

E: info@openestates.co.uk

W: www.openestates.co.uk

Agents Note: Whilst every care has been taken to prepare these sales particulars, they are for guidance purposes only. All measurements are approximate and for general guidance purposes only and whilst every care has been taken to ensure their accuracy, they should not be relied upon and potential buyers are advised to recheck the measurements