



Furze Close

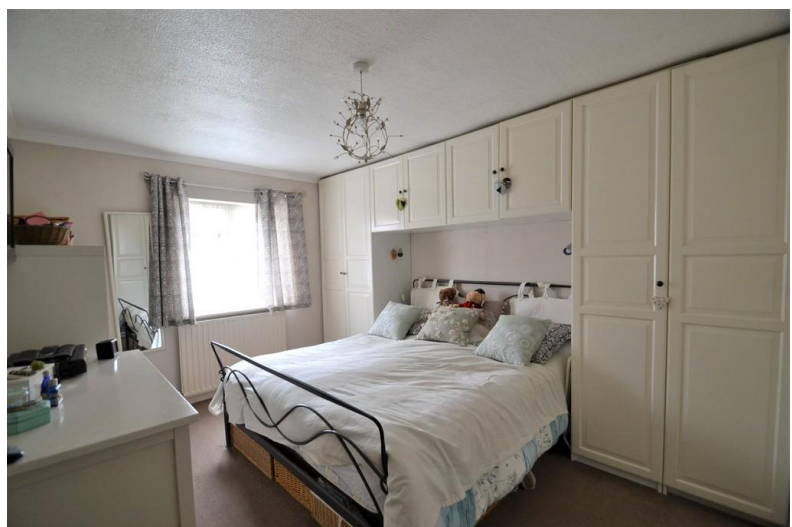
South Oxhey, Watford, WD19

Guide Price of £429,950

- 3 Double Bedrooms
- Bathroom with Separate Shower Cubicle
- Living/Dining Room
- Spacious Fitted Kitchen
- Good Sized Rear Garden
- Off Street Parking
- Close Rail Links to Central London
- CHAIN FREE



T: 01923 537 111



A well maintained three double bedroom semi detached family home sitting on a corner plot in a popular residential area close to Carpenders Park Station, local shops and schools. Extended some eighteen years ago by the current owners creating spacious accommodation through-out and comprises on the ground floor: An entrance hall, large living/dining room and a spacious fitted kitchen. Upstairs are three double bedrooms and a family bathroom with a separate shower cubicle. The property benefits from a driveway to the front providing off street parking for two/three cars. To the rear is an attractive well-stocked garden with a large storage shed and covered seating area.

FIRST FLOOR

LANDING

BEDROOM ONE

15' 2" x 10' 8" (4.62m x 3.25m)

BEDROOM TWO

10' 8" x 9' 2" (3.25m x 2.79m)

BEDROOM THREE

10' 0" x 9' 3" (3.05m x 2.82m)

FAMILY BATHROOM

GROUND FLOOR

ENTRANCE HALL

LIVING/DINING ROOM

27' 0" x 10' 8" (8.23m x 3.25m)

KITCHEN

15' 11" x 9' 3" (4.85m x 2.82m)

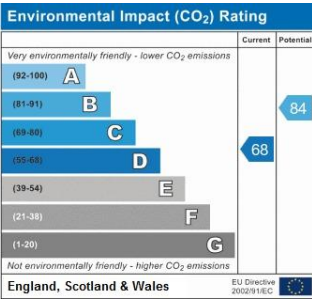
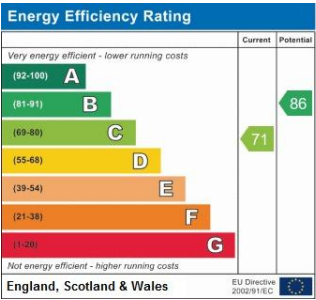
EXTERIOR

FRONTAGE

Driveway providing off street parking for two/three cars, grass verge to side leading to main entrance.

REAR

Paved patio leading to area of lawn bordered by mature shrubs and bushes and brick wall to one side, timber storage shed with lighting and power, covered seating area and gated side access.



COUNCIL TAX BAND

Tax band C

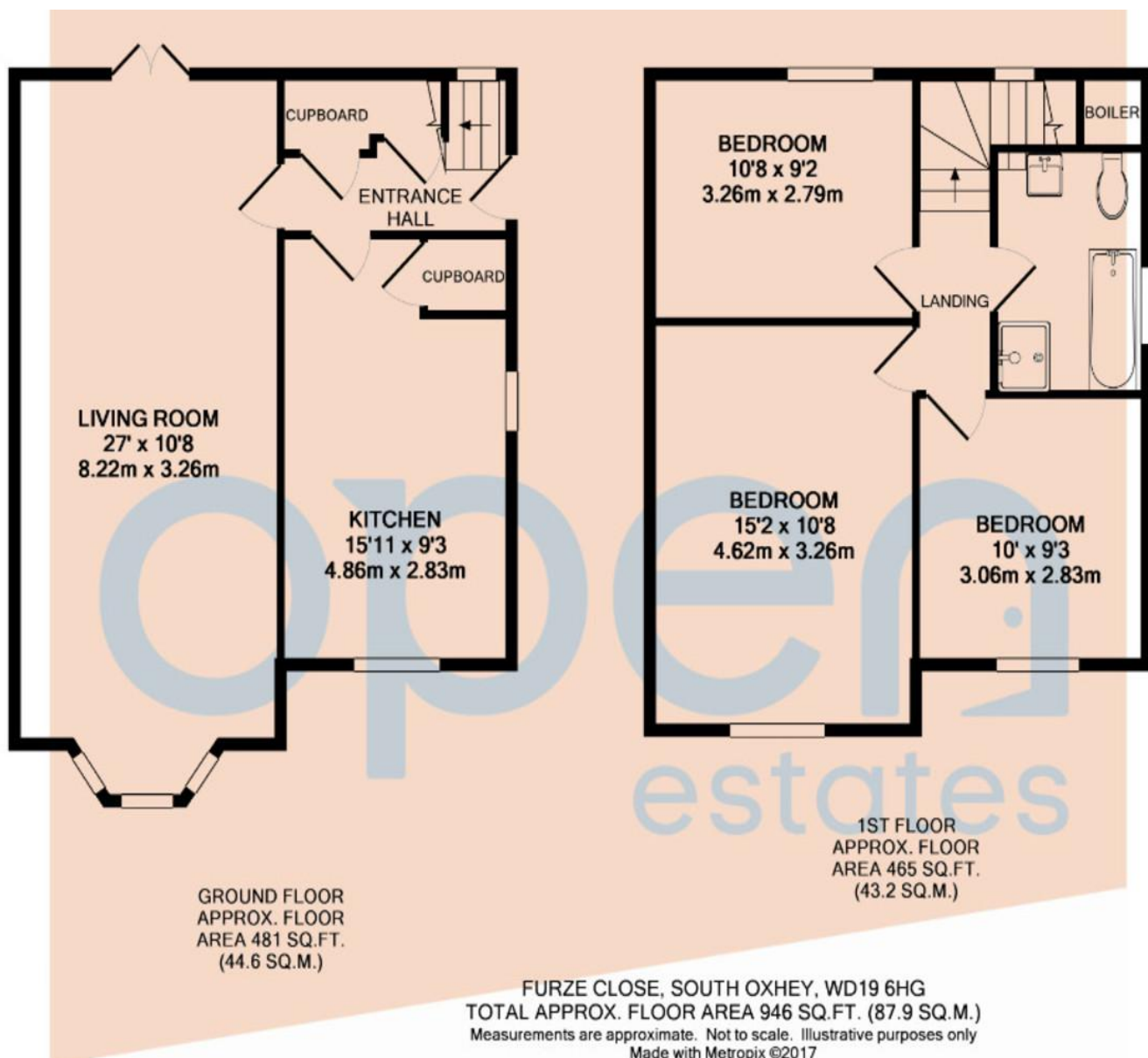
TENURE

Freehold

LOCAL AUTHORITY

Hertsmere Borough Council





OFFICE

54 Watling Street
Radlett
Hertfordshire
WD7 7NN

T: 01923 537 111

E: info@openestates.co.uk

W: www.openestates.co.uk

Agents Note: Whilst every care has been taken to prepare these sales particulars, they are for guidance purposes only. All measurements are approximate and for general guidance purposes only and whilst every care has been taken to ensure their accuracy, they should not be relied upon and potential buyers are advised to recheck the measurements