



Porters Park

Shenley, Radlett WD7

£1,300 pcm

- Porters Park Development
- Completely Refurbished Through-out
- Brand New Kitchen
- New Flooring Through-out
- Living/Dining Room
- Two Double Bedrooms
- Allocated Parking for Two Vehicles
- AVAILABLE NOW



T: 01923 537 111



Situated in a quiet close on the ever popular Porters Park Development this UNFURNISHED TWO DOUBLE BEDROOM TERRACED HOUSE has been newly refurbished including a brand new kitchen and new flooring throughout. The accommodation also includes a living/dining room, guest W.C., sunny aspect rear garden and allocated parking. AVAILABLE NOW.

GROUND FLOOR

ENTRANCE HALL

GUEST CLOAKROOM

KITCHEN

(3m x 1.75m) 9' 10" x 5' 9"

LIVING/DINING ROOM

(4.85m x 3.68m) 15' 11" x 12' 1"

FIRST FLOOR

LANDING

BEDROOM ONE

(3.02m x 3.68m) 9' 11" x 12' 1"

BEDROOM TWO

(2.92m x 3.68m) 9' 7" x 12' 1"

BATHROOM

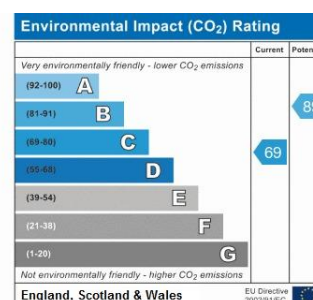
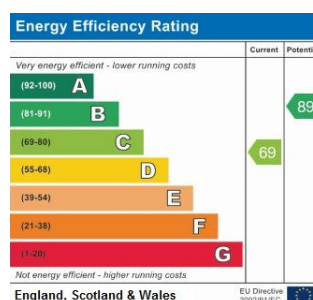
EXTERIOR

REAR

Secluded private and sunny aspect rear garden.

FRONTAGE

Two allocated parking spaces.

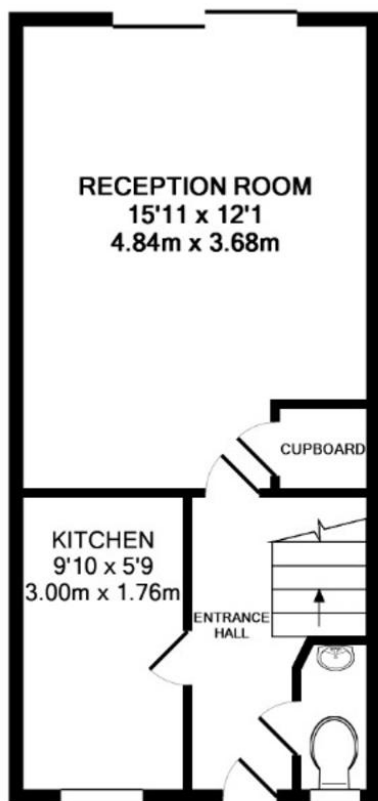


COUNCIL TAX BAND

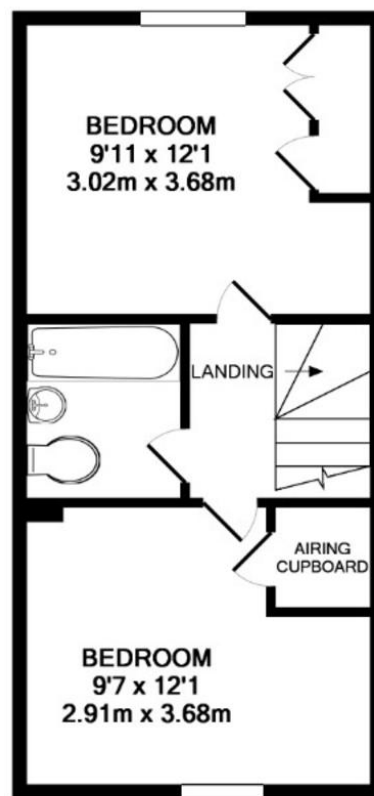
Tax band D

LOCAL AUTHORITY

Hertsmere Borough Council



GROUND FLOOR
APPROX. FLOOR
AREA 314 SQ.FT.
(29.2 SQ.M.)



1ST FLOOR
APPROX. FLOOR
AREA 312 SQ.FT.
(29.0 SQ.M.)

GREENWOOD GARDENS, PORTERS PARK, WD7 9LF
TOTAL APPROX. FLOOR AREA 627 SQ.FT. (58.2 SQ.M.)

Whilst every attempt has been made to ensure the accuracy of the floor plan contained here, measurements of doors, windows, rooms and any other items are approximate and no responsibility is taken for any error, omission, or mis-statement. This plan is for illustrative purposes only and should be used as such by any prospective purchaser. The services, systems and appliances shown have not been tested and no guarantee as to their operability or efficiency can be given

Made with Metropix ©2016



OFFICE

54 Watling Street
Radlett
Hertfordshire
WD7 7NN

T: 01923 537 111

E: info@openestates.co.uk

W: www.openestates.co.uk

Agents Note: Whilst every care has been taken to prepare these sales particulars, they are for guidance purposes only. All measurements are approximate and for general guidance purposes only and whilst every care has been taken to ensure their accuracy, they should not be relied upon and potential buyers are advised to recheck the measurements