



## Corfe Close

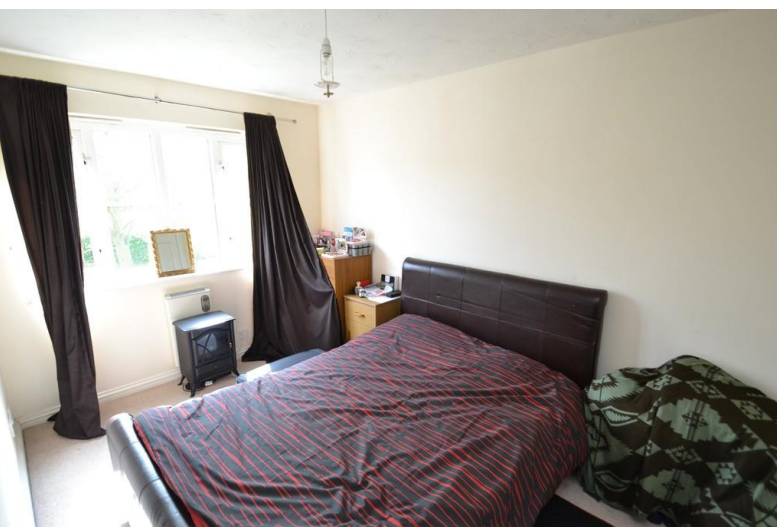
Borehamwood, WD6

- 2 Bedrooms
- Living/Dining Room
- Separate Fitted Kitchen
- Modern Bathroom
- Separate Shower Cubicle
- First Floor
- Allocated Parking Space
- CHAIN FREE

Guide Price of £285,000



T: 01923 537 111



A two bedroom first floor apartment located on the quiet and sought after Woodside Grange Development conveniently situated within a short walk to local shopping and transport facilities. The property is offered chain free and comprises: An entrance hall, spacious living/dining room, modern fitted kitchen, double bedroom with fitted double wardrobe, single bedroom, family bathroom with separate shower cubicle, a large storage cupboard, storage heating, allocated parking space and is being offered chain free.

#### **ENTRANCE HALLWAY**

#### **LIVING DINING ROOM**

17' 6" x 10' 2" (5.33m x 3.1m)

#### **KITCHEN**

11' 7" x 8' 9" (3.53m x 2.67m)

#### **BEDROOM ONE**

14' 3" x 8' 3" (4.34m x 2.51m)

#### **BEDROOM TWO**

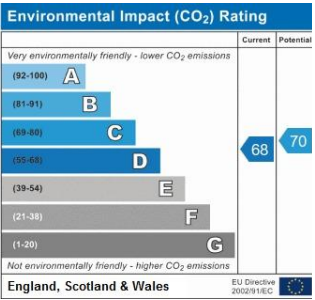
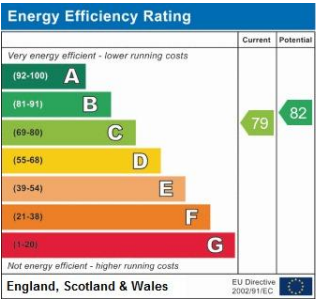
9' 11" x 5' 10" (3.02m x 1.78m)

#### **FAMILY BATHROOM**

8' 9" x 8' 9" (2.67m x 2.67m)

#### **EXTERIOR**

#### **ALLOCATED PARKING SPACE**



**COUNCIL TAX BAND**

Tax band D

**TENURE**

Leasehold

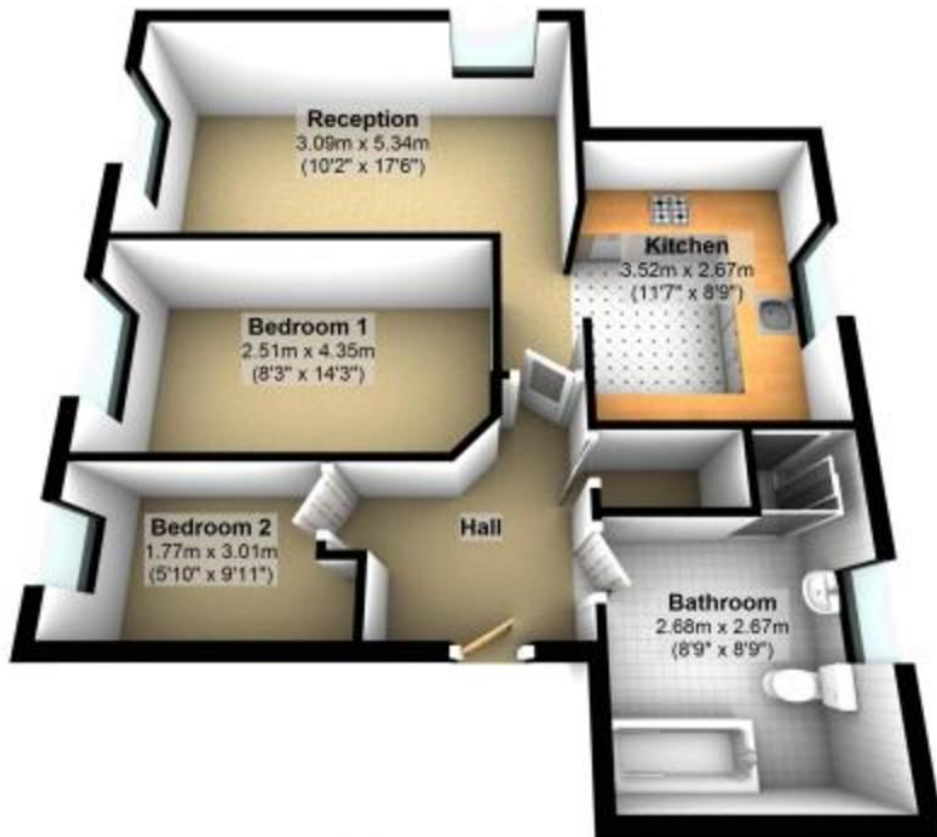
**LOCAL AUTHORITY**

Hertsmere Borough Council



## Ground Floor

Approx. 57.8 sq. metres (621.9 sq. feet)



Total area: approx. 57.8 sq. metres (621.9 sq. feet)

### OFFICE

54 Watling Street  
Radlett  
Hertfordshire  
WD7 7NN

**T:** 01923 537 111

**E:** [info@openestates.co.uk](mailto:info@openestates.co.uk)

**W:** [www.openestates.co.uk](http://www.openestates.co.uk)

Agents Note: Whilst every care has been taken to prepare these sales particulars, they are for guidance purposes only. All measurements are approximate and for general guidance purposes only and whilst every care has been taken to ensure their accuracy, they should not be relied upon and potential buyers are advised to recheck the measurements.