



Hambleton Place

Gills Hill, Radlett, WD7

Guide Price of £749,950

- Central Radlett Location
- Private Gated Development
- 2 Double Bedrooms
- 2 Bathrooms (1 En Suite)
- Spacious Kitchen/Diner
- Two Balconies
- Garage and Allocated Parking
- CHAIN FREE



T: 01923 537 111



Open Estates are proud to offer this superb first floor apartment in the much sought after Hambleton Place development in Central Radlett. Constructed in 2000 by master builders W.E. Black this fine home is set behind electronic gates with beautifully maintained communal areas and lift access. The accommodation comprises: Large entrance hall, living/dining room with balcony overlooking the communal gardens, spacious fully fitted kitchen/breakfast room, master bedroom with balcony, dressing area and en suite shower room, second double bedroom and a family bathroom. This stunning property also includes a single garage en bloc and dedicated parking space for a second vehicle. The apartment is presented in first class order, is being offered chain free and an early viewing is highly recommended.

ENTRANCE HALL

LIVING/DINING ROOM

18' 2" x 12' 10" (5.54m x 3.91m)

BALCONY

11' 6" x 4' 4" (3.51m x 1.32m)

KITCHEN/BREAKFAST ROOM

19' x 9' 8" (5.79m x 2.95m)

MASTER BEDROOM

19' 6" x 14' 8" (5.94m x 4.47m)

EN SUITE SHOWER ROOM

BALCONY

BEDROOM TWO

14' 7" x 8' 11" (4.44m x 2.72m)

FAMILY BATHROOM

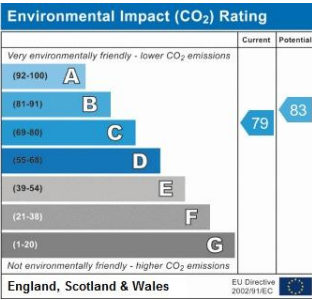
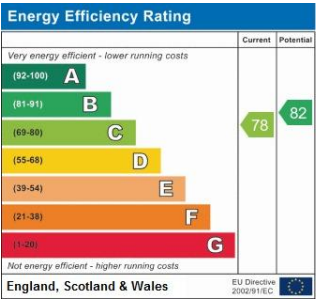
7' 8" x 5' 11" (2.34m x 1.8m)

EXTERIOR

GARAGE EN BLOC

ALLOCATED PARKING SPACE

COMMUNAL GARDENS



COUNCIL TAX BAND

Tax band G

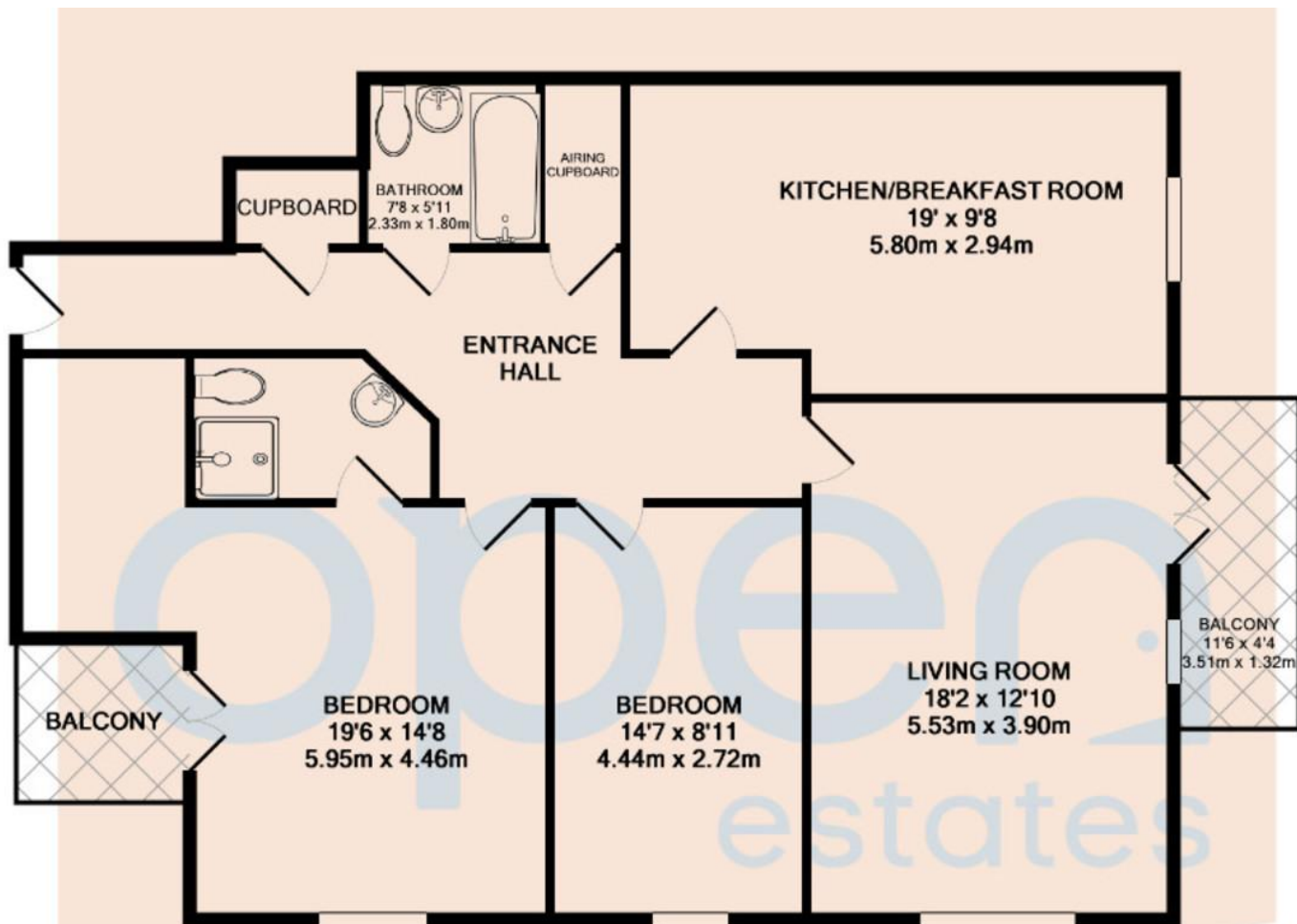
TENURE

Leasehold

LOCAL AUTHORITY

Hertsmere Borough Council





HAMBLEDON PLACE, GILLS HILL, RADLETT, WD7 8BT
 TOTAL APPROX. FLOOR AREA 1062 SQ.FT. (98.6 SQ.M.)
 Measurements are approximate. Not to scale. Illustrative purposes only
 Made with Metropix ©2018

OFFICE

54 Watling Street
 Radlett
 Hertfordshire
 WD7 7NN

T: 01923 537 111

E: info@openestates.co.uk

W: www.openestates.co.uk

Agents Note: Whilst every care has been taken to prepare these sales particulars, they are for guidance purposes only. All measurements are approximate and are for general guidance purposes only and whilst every care has been taken to ensure their accuracy, they should not be relied upon and potential buyers are advised to recheck the measurements.