



**6 Knightley Walk
London,
SW18 1HD**

**£725,000
Leasehold**

Two balconies South and North facing

Wood flooring throughout

2 double bedrooms

**River views from the reception/kitchen and
bedroom**

Open Plan Kitchen

Secure Underground Parking

6 Knightley Walk
London, SW18 1HD

£725,000

Chartwell Residential are delighted to offer this stunning, two bedroom, 7th floor, Penthouse apartment with dual balconies. This lovely property is situated in Osiers Road, close to the River Thames and the green spaces of Wandsworth Park. Just a few minutes walk away is Wandsworth Town Centre and Putney High Street is approximately 0.7 miles away with its wide variety of restaurants and waterside bars, along with the Putney Exchange shopping centre. The River Taxi stop at Riverside Quarter is within 200 meters giving access to the City. Comprises spacious entrance hall with great storage cupboards, open plan living room/kitchen with integrated appliances, two bedrooms with fitted wardrobes and the master has an en-suite shower room. The living room and one of the bedrooms have access to the private balcony. Further benefits from having river views, a secure communal entrance and a lift within the block.

£725,000
Leasehold

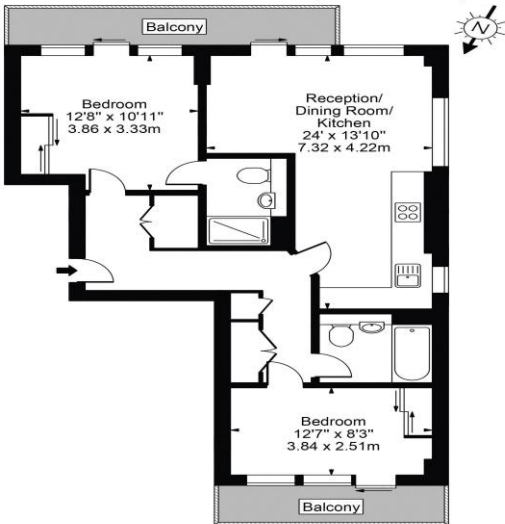


Chartwell Residential Estate Agents

Tel: 020 8780 6790
Email: info@chartwelluk.com
Website: www.chartwelluk.com

Energy Efficiency Rating			Environmental Impact (CO ₂) Rating		
	Current	Potential		Current	Potential
Very energy efficient - lower running costs			Very environmentally friendly - lower CO ₂ emissions		
(92+)	A		(92+)	A	
(81-91)	B	83	(81-91)	B	89
(69-80)	C		(69-80)	C	
(55-68)	D		(55-68)	D	
(39-54)	E		(39-54)	E	
(21-38)	F		(21-38)	F	
(1-20)	G		(1-20)	G	
Not energy efficient - higher running costs			Not environmentally friendly - higher CO ₂ emissions		
England & Wales			England & Wales		
EU Directive 2002/91/EC			EU Directive 2002/91/EC		

Knightley Walk, SW18
Approx. Gross Internal Area 741 Sq Ft - 68.84 Sq M



Seventh Floor
For Illustration Purposes Only - Not To Scale Floor Plan by Mira Nikolova Photography
This floor plan should be used as a general outline for guidance only and does not constitute in whole or in part an offer or contract.
Any intending purchaser or lessee should satisfy themselves by inspection, searches, enquiries and full survey as to the correctness of each statement.
Any areas, measurements or distances quoted are approximate and should not be used to value a property or be the basis of any sale or let.