

RESIDENTIAL SALES  
LETTINGS & PROPERTY  
MANAGEMENT

COWLING  
& PAYNE



Alderney Gardens, Wickford  
Offers in excess of £270,000

Cowling & Payne are pleased to offer for sale this four bedroom semi detached house located in a sought after location in Wickford. The property comprises of four good sized bedrooms, a downstairs shower room, family bathroom and a conservatory with french doors leading to rear garden. This property offers great living space throughout and must be viewed internally to be fully appreciated.

**Lounge 20'1 x 14'8 (6.12m x 4.47m)**

Laminate flooring, coving to ceiling, tv point, feature fire place, power points, patio doors to conservatory, telephone point, two radiators



**Conservatory 11'3 x 18'6 (3.43m x 5.64m)**

Double glazed throughout, double glazed french doors to garden, electric heater, laminate flooring



**Downstairs shower room**

Double glazed frosted window to side, wash hand basin with vanity units, low level w/c, shower cubicle, tiled flooring and walls



**Hallway**

Two storage cupboards, laminate flooring, coving to ceiling, radiator, door to garage

**Kitchen 7'4 x 10'9 (2.24m x 3.28m)**

Double glazed window to front, tiled splash back, roll edge work surface, sink and drainer, power points, eye level cupboard and drawers, laminate flooring, radiator, electric oven with extractor fan, place for washer dryer, dish washer and integrated fridge



**Landing**

Loft access, power points, panic alarm

**Bedroom One 12'5 x 10'2 (3.78m x 3.10m)**

Double glazed window to rear, tv point, radiator, power points, laminate flooring





**Bedroom Two 10'5 x 9'7 (3.18m x 2.92m)**  
Double glazed window to rear, radiator, power points, tv point



**Bedroom Three 9'7 x 9'6 (2.92m x 2.90m)**  
Coving to ceiling, double glazed window to front, tv point, power points, radiator

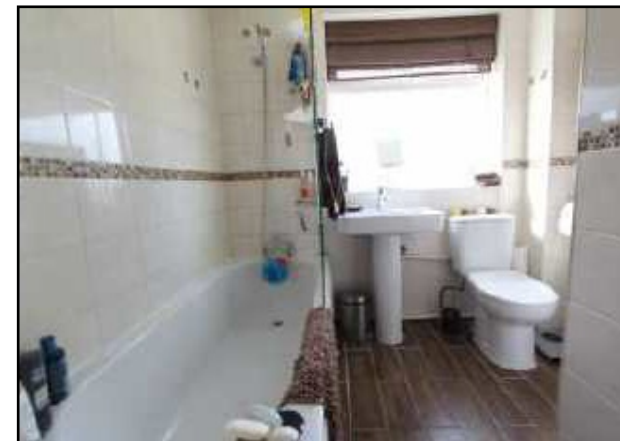


**Bedroom Four 9'6 x 10'3 (2.90m x 3.12m)**  
Built in wardrobe, radiator, double glazed window to front, power points, laminate flooring



**Bathroom**  
Double glazed frosted window to side, radiator, low level w/c, wash hand basin, bath with

shower over, tiled walls, laminate flooring, coving to ceiling



**Garden**  
Summer house, patio, shed, laid lawn



You may download, store and use the material for your own personal use and research. You may not republish, retransmit, redistribute or otherwise make the material available to any party or make the same available on any website, online service or bulletin board of your own or of any other party or make the same available in hard copy or in any other media without the website owner's express prior written consent. The website owner's copyright must remain on all reproductions of material taken from this website.



