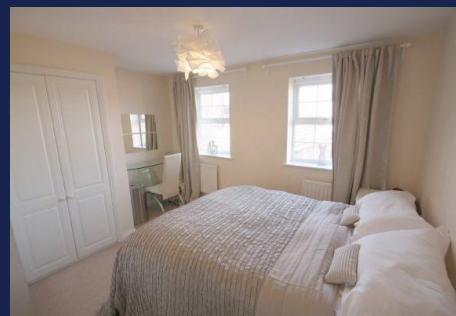


12 Papermill Cottages, Retford

FIVE STAR
P R O P E R T Y



0 1 7 7 7 7 0 8 7 0 0

- FLEXIBLE LAYOUT
- MOMENTS FROM TOWN
- GARAGE & PARKING

- 4 BED & 2 BATH
- MODERN DECOR
- EPC RATING: C

FIVE STAR
P R O P E R T Y

£142,500

www.fivestar-property.co.uk

Description

4 BEDROOMS - 2 BATHROOMS - DINING KITCHEN - LOUNGE - GARDEN - GARAGE & DRIVEWAY - CENTRAL LOCATION FOR AMENITIES - MODERN PRESENTATION THROUGHOUT - NO UPWARD CHAIN - WELL APPOINTED ACCOMMODATION OVER 3 FLOORS - VIEWING ADVISED - TO VIEW CALL FIVE STAR PROPERTY 01777 708700.

Entrance Hall

The glazed composite door opens into the entrance hallway, with a tiled floor, radiator, coving and stairs rising to the first floor accommodation.

Bedroom 4/Study 8'2" x 8'2" (2.49m x 2.49m)

Having a window to the front, useful built in cupboard and a radiator.

Cloakroom

Comprising of a two piece suite incorporating a low flush WC, wash hand basin, tiled flooring and splash backs, radiator and extractor fan.

Dining Kitchen 15'5" x 12'4" (4.70m x 3.76m)

This well appointed room offers a range of fitted wall and base units, worktops and tiled splash backs over, fitted dishwasher, washing machine, fridge and freezer, range cooker with extractor hood over, down lights, tiled flooring, radiator, rear facing window and door to the rear garden.

First Floor Landing

Providing access to the first floor accommodation, airing cupboard and stairs to the second floor accommodation.

Lounge 15'5" x 12'5" (4.70m x 3.78m)

Having two sets of french doors to the rear that open up to a Juliet balcony, electric fire set into a marble fireplace with a contemporary wooden surround, two radiators and coving to the ceiling.

Bedroom Three 12'4" x 8'9" (3.76m x 2.67m)

With two front facing windows, fitted wardrobe and two radiators.

Second Floor Landing

Having access to the principle second floor accommodation and a radiator.

Master Bedroom 12'4" x 10'7" (3.76m x 3.23m)

With a range of fitted wardrobes, two rear facing windows and a radiator.

En Suite

Comprising of a three piece suite which includes an enclosed shower cubicle with mains fed shower, low flush WC, pedestal wash hand basin, tiled splash backs, down lights, extractor and a radiator.

Bedroom Two 12'4" x 8'10" (3.76m x 2.69m)

Having two rear facing windows, built in cupboard and a radiator.

Bathroom

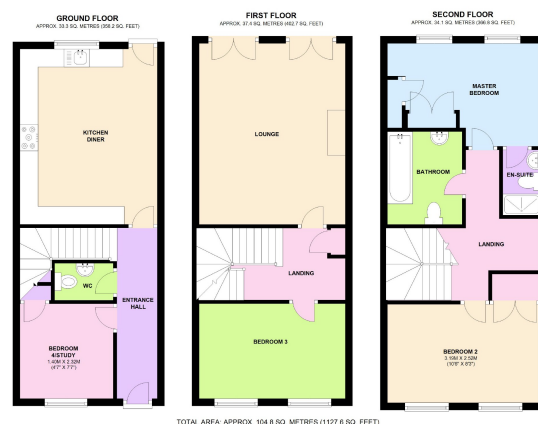
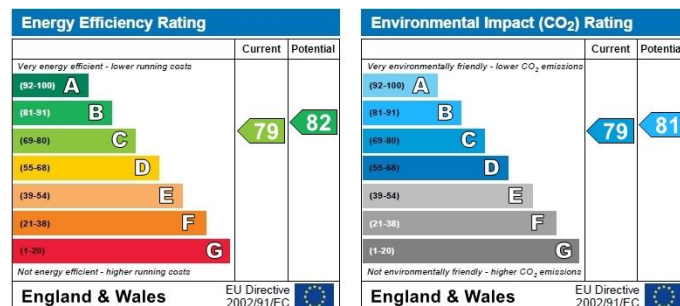
Comprising of a three piece suite which incorporates a panel bath with shower over, low flush WC, pedestal wash hand basin, tiled splash backs, extractor fan, down lights and a radiator.

Garden

To the rear is an enclosed gravel garden with panel fencing to the perimeter and a courtesy gate to the garage and parking area.

Garage & Parking

Having a driveway leading to the single garage with up and over door.



IMPORTANT NOTICES

Five Star Property Ltd. for themselves and for the Vendors or Lessors of this Property give notice that: 1: These particulars are intended to give a fair and accurate general outline only for the guidance of intending Purchasers or Lessees and they do not constitute an offer or contract or any part of an offer or contract. 2: All descriptions, dimensions, references to condition and other items in these Particulars are given as a guide only and no responsibility is assumed by Five Star Property Ltd. for the accuracy of individual items. Intending Purchasers or Lessees should not rely on them as statements or representations of fact and should satisfy themselves as to the correctness of each item by inspection or by making independent enquiries. In particular, dimensions of land, rooms or buildings should be checked. Metric/imperial conversions are approximate only. 3: Intending Purchasers or Lessees should make their own independent enquiries regarding use or past use of the property, necessary permissions for use and occupation, potential uses and any others matters affecting the property prior to purchase. 4: Five Star Property Ltd., and any person in its employment, does not have the authority, whether in these Particulars, during negotiations or otherwise, to make or give any representation or warranty in relation to this property. No responsibility is taken by Five Star Property Ltd. for any error, omission of mis-statement in these particulars. 5: No responsibility can be accepted for any costs or expenses incurred by intending Purchasers or Lessees in inspecting the property, making further enquiries or submitting offers for the Property Registered in England and Wales. Registration Number 06278685.