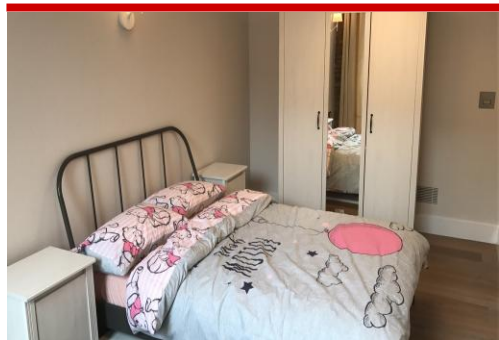


12-13 Richmond Buildings, Soho , W1D 3HF

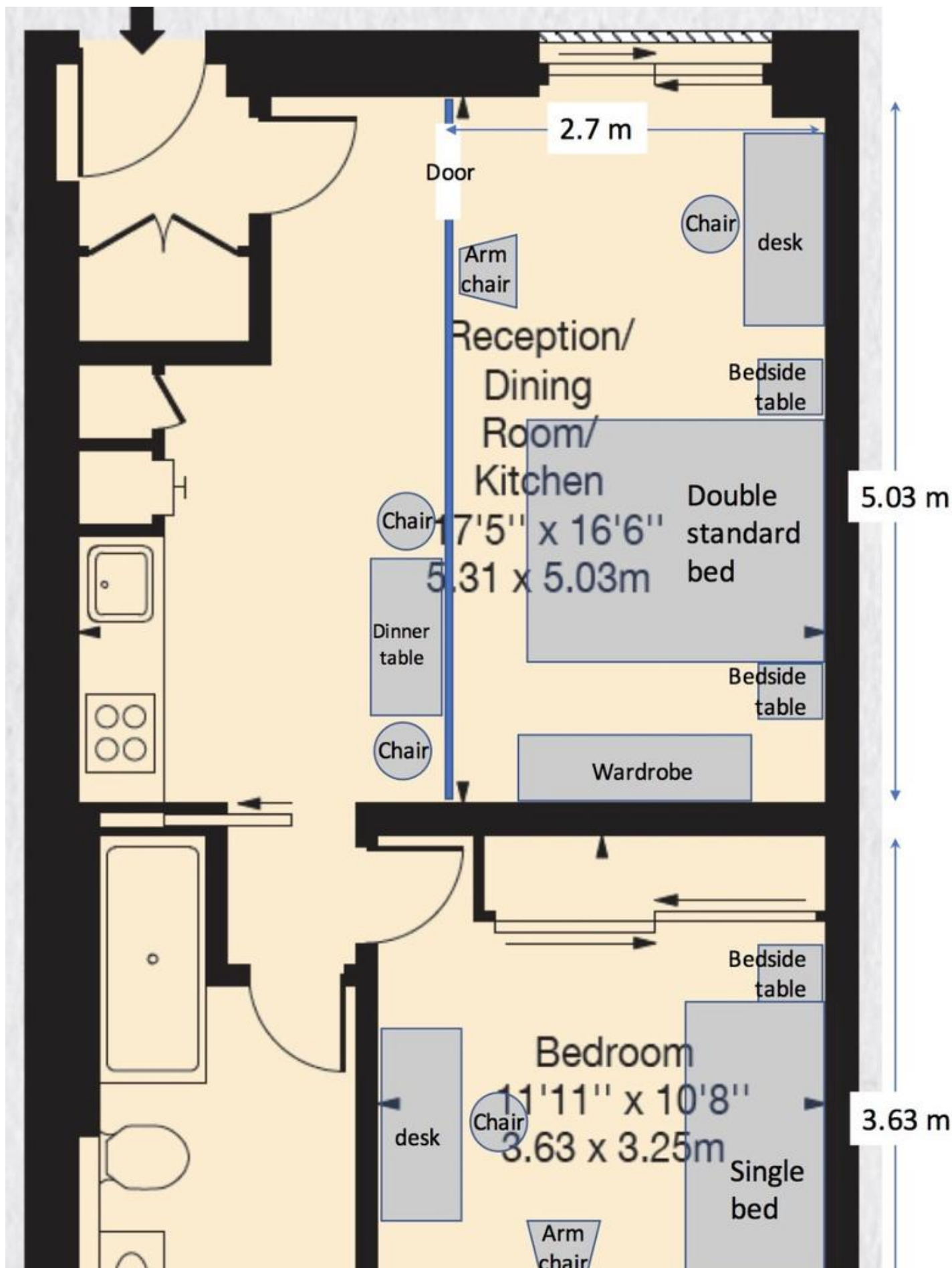
£3,467 pcm

*** Available 18th of June, 2018 *** 3 Month Rent Term *** River Habitat are pleased to offer you this newly built Two Bedroom, One bathroom furnished Flat. Perfect for someone wanting a center of London location, a minutes walk from Soho Square and Oxford Street. With the Soho Hotel next door ,Soho Theatre around the corner and every amenity imaginable close by, why not call now? Bills Included in rent.

- Available 18th June, 2018
- Two Good Size Bedrooms
- Lovely New build Apartment
- Short walk from Soho Square







655 Commercial Road, London, E14 7LW

Disclaimer

River Habitat, their clients and any joint agents give notice that: 1. They have no authority to make or give any representations or warranties in relation to the property. These particulars do not form any part of an offer or contract and must not be relied upon as statements or representations of fact. 2. Any areas, measurements or distances are approximate. The text, photographs and plans are for guidance only and are not necessarily a complete representation of the property. Photographs are taken using a wide angle lens camera. 3. It should not be assumed that the property has all necessary planning, building regulations or other consents and River Habitat have not tested any services, equipment or other facilities. Purchasers must satisfy themselves by inspection or otherwise