

Kevanjo Cabin Lakeside, Anderby Creek, PE24 5XS

Price £99,950



We offer for sale this detached two bedroom timber framed cabin, with a static caravan, in a sought after location. The property is situated in a lovely position, just a short walk to the beach, within the popular seaside resort of Anderby Creek.

The property, which is of non traditional construction, has the benefit of UPVC double glazed windows and doors. Internally the accommodation consists of:

UPVC Entrance Door to:

Kitchen/Diner

10'3" x 18'11"

Extending to 24'4". Fitted wall units and work surface. Built in storage cupboard. Stainless steel sink unit and drainer. Old stove. 2 Double power points. Double opening 'French' doors leading on to the garden. Open to:

Lounge

10'8" x 20'3"

Extending to 23'10". Fireplace. 3 Double power points. Double opening 'French' doors leading on to the garden.

Bedroom 1

19" x 10'6"

Single & double power points. Electric trip box. Double opening 'French' doors leading on to the garden. Door to:

WC

5'8" x 3'

With w.c. and hand basin.

Bedroom 2

10'6" x 10'6"

Electric trip box. 2 Double power points. Double opening 'French' doors leading on to the garden.

Bathroom

10'11" x 8'7"

Consisting of corner bath, shower cubicle with 'Triton' electric shower and pedestal wash hand basin. Opening too:

WC

5'8" x 3'

With w.c. and hand basin.

Outside

The property is located in a secluded position. It is approached via double opening gates leading on to the long driveway. To the side of the driveway is a lawned garden area with the static caravan. At the end of the driveway a further gate opens on to the garden and cabin. The garden is mostly laid to lawn and has a timber shed, container and covered garden area.

Static Caravan

'Carnaby Banbury 282B' static caravan. With Lounge/Diner, Kitchen, 2 Bedrooms & Shower Room.

Tenure

Freehold

Opening Hours

Monday - Friday: 9.00am - 5.00pm

Saturday: 9.00am - 3.00pm

Viewing Arrangements

Viewing by appointment through Choice Properties on 01507 443777.

Council Tax

Local Authority - East Lindsey District Council,
Tedder Hall,
Manby Park,
Louth.
LN11 8UP
Tel. No. 01507 601 111
Website: www.e-lindsey.gov.uk

Council Tax Band - A

Making an Offer

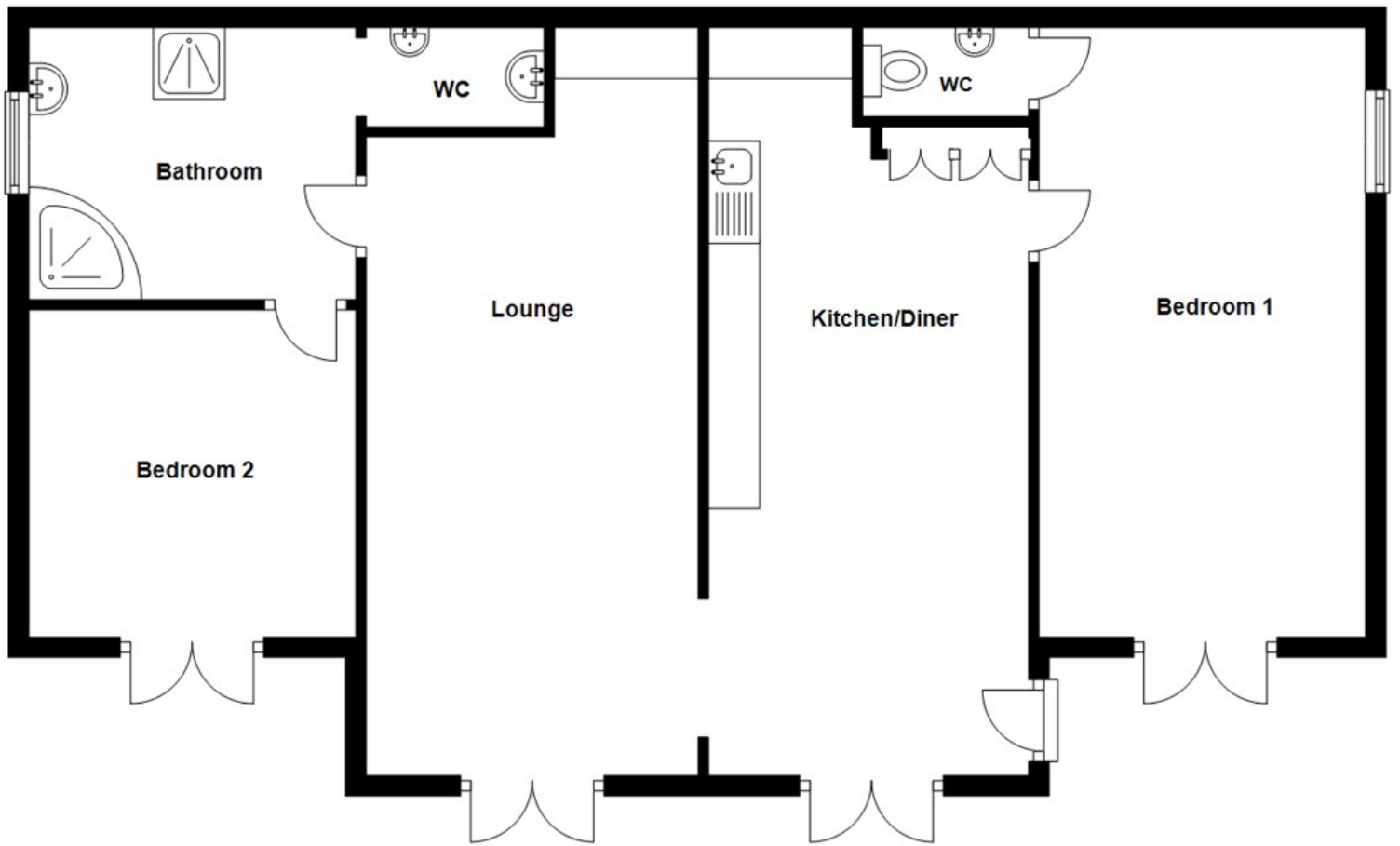
If you are interested in making an offer on this property please have a chat with us and we will be happy to start the negotiations for you. Under money laundering regulation we will ask you to provide us with formal photographic ID by way of either a passport or driving licence. If you are travelling from afar we would advise bringing this documentation with you just in case this home is perfect for you.

We would also like to make you aware that we will require details of your estate agents, proof of funds should you be a cash buyer and solicitors details, as this helps us to start the transaction quickly for you.

Choice Properties have not tested any included apparatus, equipment, fixtures, fittings, central heating systems or services mentioned in these particulars and purchasers are advised to satisfy themselves as to their working order and condition. Buyers are strongly advised to obtain verification from their Solicitor or Surveyor regarding the working order and condition of all the items included. These particulars do not constitute, nor constitute any part of, an offer or contract. All statements contained in these particulars as to this property are made without responsibility on the part of Choice Properties or the vendors or lessors. None of the statements contained in these particulars as to this property are to be relied on as statements or representations of fact. All measurements have been taken as a guide to prospective buyers only, and are approximate. Any intending purchasers must satisfy themselves by inspection or otherwise as to the correctness of each of the statements contained in these particulars. The vendors do not make or give and neither Choice Properties nor any person in their employment has any authority to make or give any representation or warranty whatever in relation to this property.







Directions

From Sutton on Sea head South along the A52 towards Skegness, after passing through Huttoft turn left into Anderby village before reaching Anderby Creek. When you enter the village take the second left on to lakeside and Kevanjo Cabin can be found a short distance along on the left hand side.

