



**BRADFORD  
& HOWLEY**  
HARPENDEN | MARSHALSWICK | ST ALBANS

Kingsmead, St. Albans, AL4 9JG  
Asking Price £425,000

## NO UPPER CHAIN

Located in a quiet cul-de-sac in Jersey Farm is this well-presented two-bedroom semi-detached BUNGALOW. The accommodation comprises an entrance porch, living room, a recently fitted kitchen, shower room, main bedroom with built in wardrobes, a further bedroom/study and a large conservatory.

Externally the property benefits from a lovely rear garden, front lawn garden, GARAGE en-bloc and on road parking.

Kingsmead is conveniently located within the Jersey Farm estate to the North of St Albans city. Local facilities nearby include a shopping parade and doctors and dental surgery.

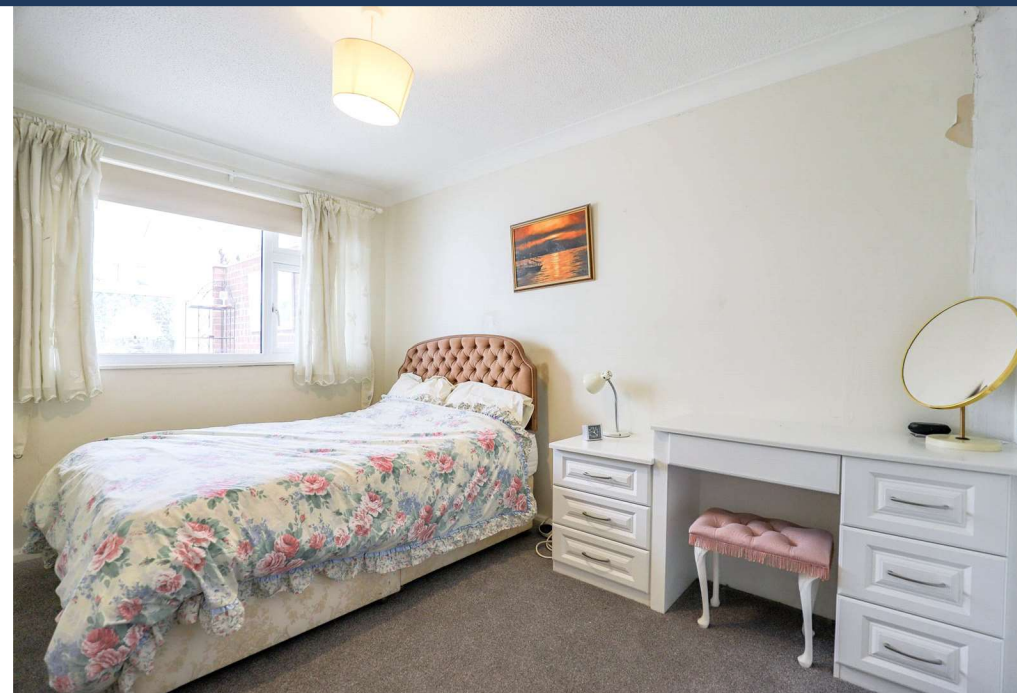
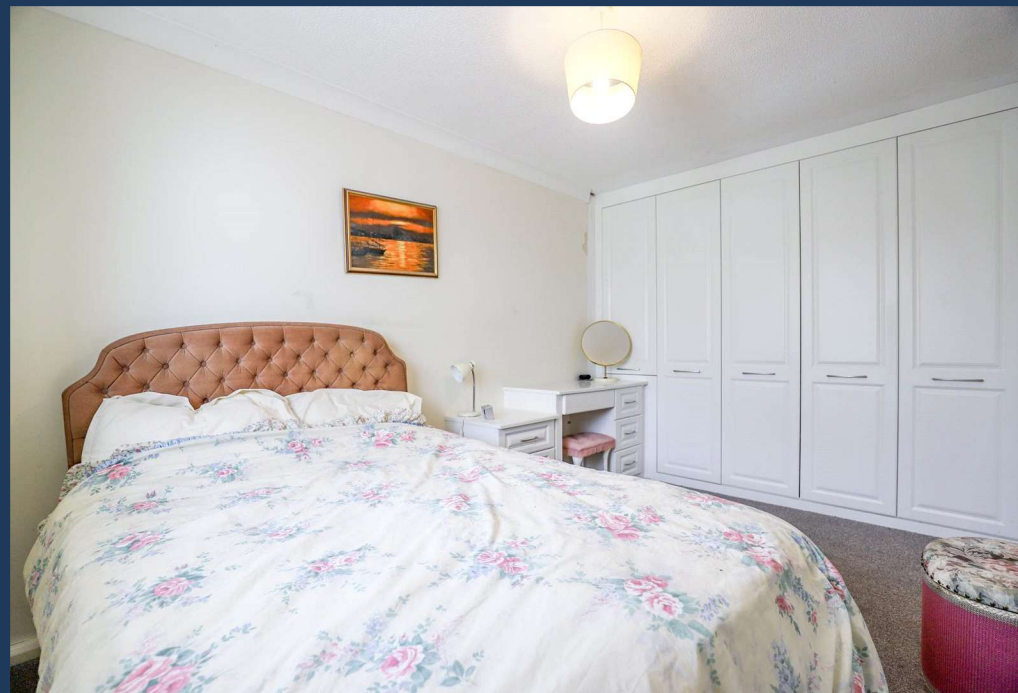
St Albans city centre and mainline station with trains into London St Pancras are only a short drive away. There is also a bus stop just close by providing a regular service into the town centre.

**Tenure: Freehold**  
**Council Tax Band: D**  
**EPC Rating: E**



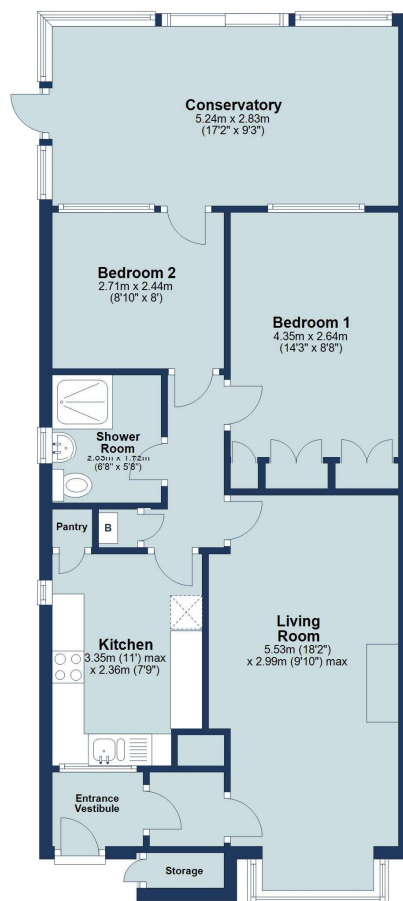






### Ground Floor

Approx. 71.7 sq. metres (772.1 sq. feet)



Total area: approx. 71.7 sq. metres (772.1 sq. feet)

Floor plan is for marketing purposes only and is to be used as a guide.  
Plan produced using PlanUp.

IMPORTANT NOTICE: These particulars are for guidance only. Whilst every effort has been made to ensure the accuracy of the descriptions, plans, and measurements, these are not guaranteed, and they do not form part of any contract or tenancy. We have not tested any of the services, equipment, or fittings. No person in this firm's employment has the authority to make or give any representation or warranty in respect of the property. Interested parties should satisfy themselves as to the conditions of any such items considered material to their prospective purchase or tenancy and may wish to consult an independent advisor. It should not be assumed that any of the articles depicted in these particulars are included in the purchase or tenancy. You may download, store, and use the material for your personal use. You may not republish the material in any format without the consent of Bradford & Howley.

Looking to Sell or Let your  
current home?



Scan me to request your FREE  
Instant Online Valuation!

**Fresh**  
FINANCIAL



Sign up for FREE mortgage monitoring today, giving  
you peace of mind you are on the right deal, every  
month.

We will compare your mortgage against thousands of  
deals and send you a monthly report.

Please note that mortgage monitoring does not  
constitute mortgage advice.

**BRADFORD  
& HOWLEY**  
HARPENDEN | MARSHALSWICK | ST ALBANS

**f** @bradfordandhowley  
**@** @bradfordandhowley  
**in** @bradford-howley  
**@** @bradfordhowley4660

**01727 856999**  
**marshalswick@bradfordandhowley.com**  
**5 The Quadrant, Marshalswick, St Albans, Herts, AL4 9RA**

**bradfordandhowley.com**