



**BRADFORD
& HOWLEY**
HARPENDEN | MARSHALSWICK | ST ALBANS

Mortimer Crescent, Kings Park, AL3 4GJ
Asking Price £900,000

A bright and spacious four-bedroom family home located on the popular Kings Park area of St Albans.

The property is accessed on the ground floor via a large beautifully tiled entrance hall which leads onto the kitchen / dining room, living room and downstairs w/c.

The kitchen / dining room is located to the front of the house and is fully fitted with white high gloss fitted units, a polished granite worktop and a range of integrated appliances.

The living room is located to the rear and occupies the full width of the house with French doors leading to the patio and garden. The master suite is located on the first floor with a large bay window and en-suite shower room.

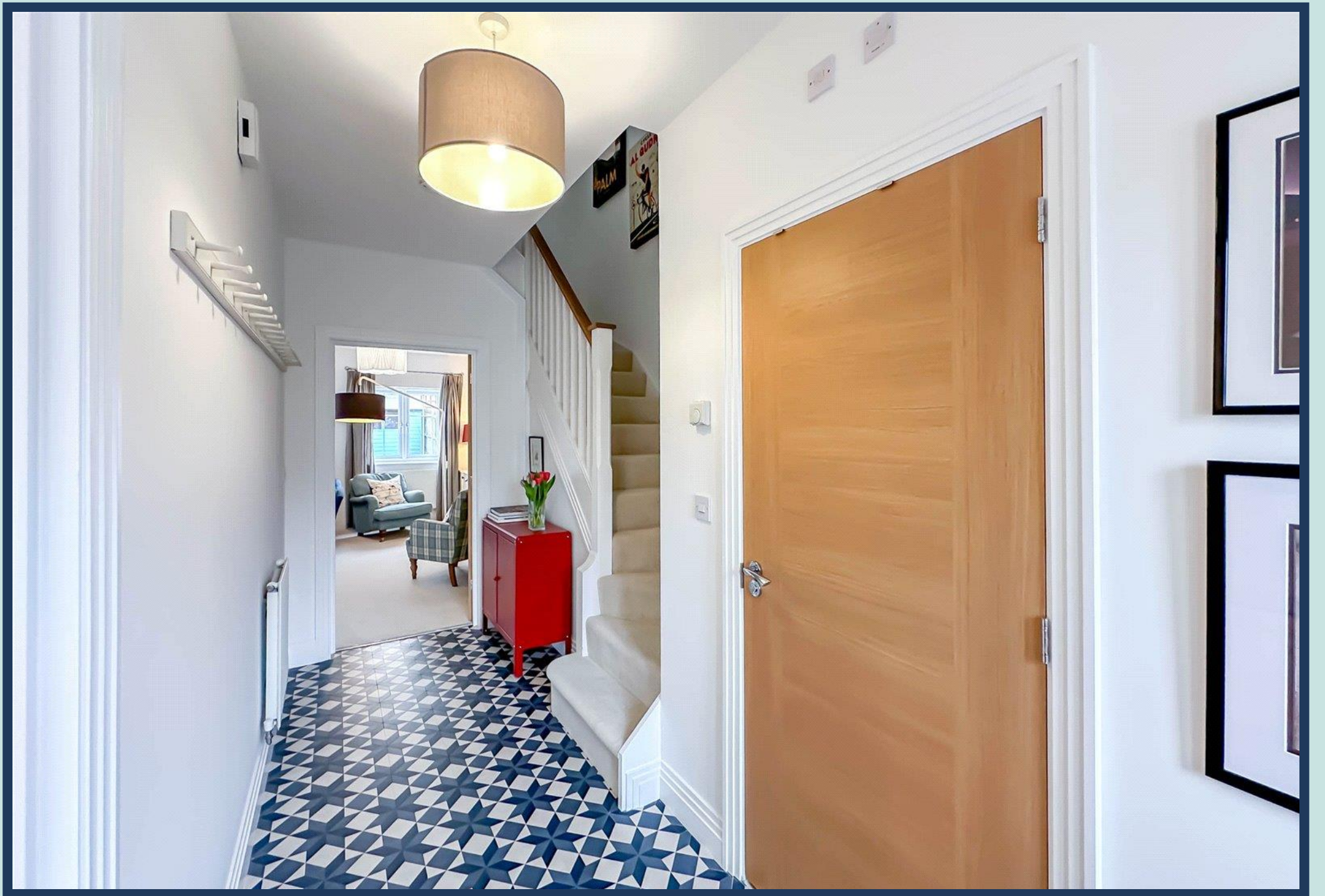
Also located on the first floor are two double bedrooms and well-appointed family bathroom.

On the second floor, the loft area has been converted to accommodate a large double bedroom, ensuite shower room and an abundance of storage.

Mortimer Crescent forms part of the sought after Kings Park development located on the south side of St Albans close to well-regarded schooling, a Waitrose supermarket and the wide-open space of Verulamium Park and adjoining lakes are just across King Harry Lane.

Tenure: Freehold
Council Tax Band: F
EPC Rating: C









Looking to Sell or Let
your current home?



Scan me to request your FREE
Instant Online Valuation!

Fresh
FINANCIAL



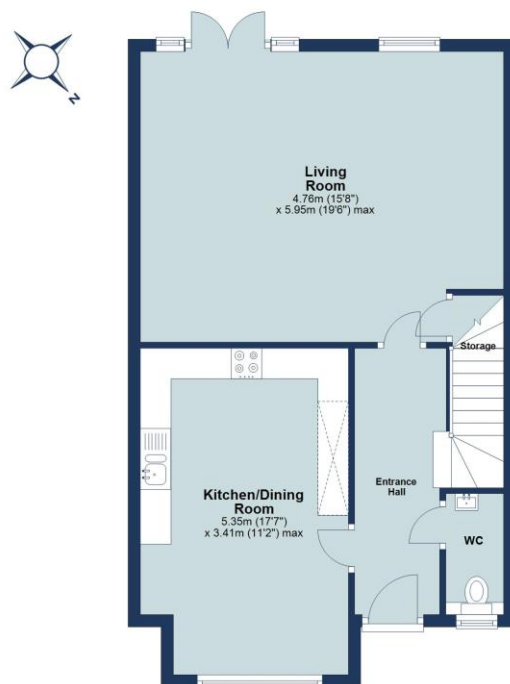
Sign up for FREE mortgage monitoring today,
giving you peace of mind you are on the right
deal, every month.

We will compare your mortgage against
thousands of deals and send you a monthly
report.

Please note that mortgage monitoring does not
constitute mortgage advice.

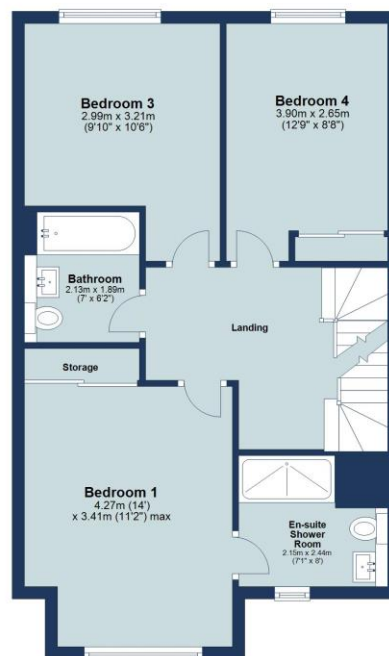
Ground Floor

Approx. 57.8 sq. metres (621.6 sq. feet)



First Floor

Approx. 57.8 sq. metres (621.6 sq. feet)



Second Floor

Approx. 33.4 sq. metres (359.9 sq. feet)



Total area: approx. 148.9 sq. metres (1603.1 sq. feet)

Floor plan is for marketing purposes only and is to be used as a guide.
Eaves not included in the total internal floor area.
Plan produced using PlanUp.

IMPORTANT NOTICE: These particulars are for guidance only. Whilst every effort has been made to ensure the accuracy of the descriptions, plans, and measurements, these are not guaranteed, and they do not form part of any contract or tenancy. We have not tested any of the services, equipment, or fittings. No person in this firm's employment has the authority to make or give any representation or warranty in respect of the property. Interested parties should satisfy themselves as to the conditions of any such items considered material to their prospective purchase or tenancy and may wish to consult an independent advisor. It should not be assumed that any of the articles depicted in these particulars are included in the purchase or tenancy. You may download, store, and use the material for your personal use. You may not republish the material in any format without the consent of Bradford & Howley.

**BRADFORD
& HOWLEY**
HARPENDEN | MARSHALSWICK | ST ALBANS

f @bradfordandhowley
@ @bradfordandhowley
in @bradford-howley
@ @bradfordhowley4660

☎ 01727 898150
✉ stalbans@bradfordandhowley.com
📍 8 Chequer Street, St Albans, Herts, AL1 3XZ

bradfordandhowley.com