



20 The Pastures, Aylesbury, Bucks. HP20 1XL
 A well presented one bedroom cluster home overlooking parkland.

£199,950

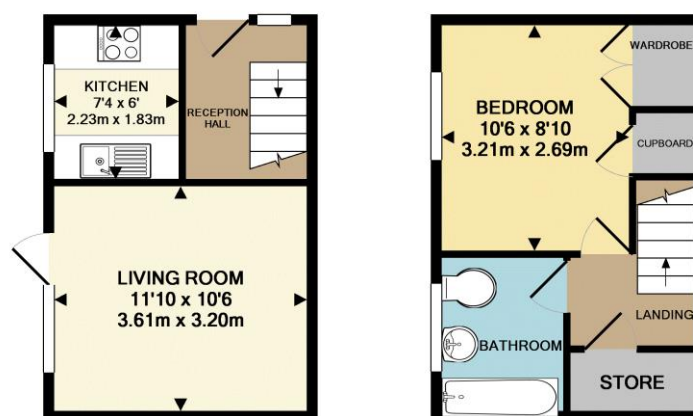
20 The Pastures, Aylesbury, Bucks. HP20 1XL

A one bedroom cluster home situated on the Coppice development with private garden and allocated parking.



Overview

- Sought after location
- Overlooking parkland
- Private garden & second "hidden garden"
- Allocated parking
- Double glazing & gas central heating
- Reception hall
- Living room with access to private garden
- Separate kitchen
- Modern bathroom
- Double bedroom

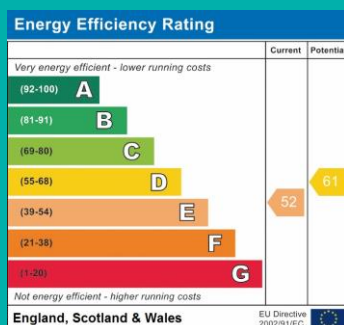


GROUND FLOOR

1ST FLOOR

Whilst every attempt has been made to ensure the accuracy of the floor plan contained here, measurements of doors, windows, rooms and any other items are approximate and no responsibility is taken for any error, omission, or mis-statement. This plan is for illustrative purposes only and should be used as such by any prospective purchaser. The services, systems and appliances shown have not been tested and no guarantee as to their operability or efficiency can be given.

Made with Metropix ©2017



26 Temple Street, Aylesbury,
Buckinghamshire, HP20 2RQ
T: 01296 422171
E: aylesbury@martinkemps.com
www.martinkemps.com

55 North Street, Thame,
Oxfordshire, OX9 3BH
T: 01844 260909
E: thame@martinkemps.com