



13 Priory Crescent, Aylesbury HP19 9NZ

Guide Price of **£170,000**

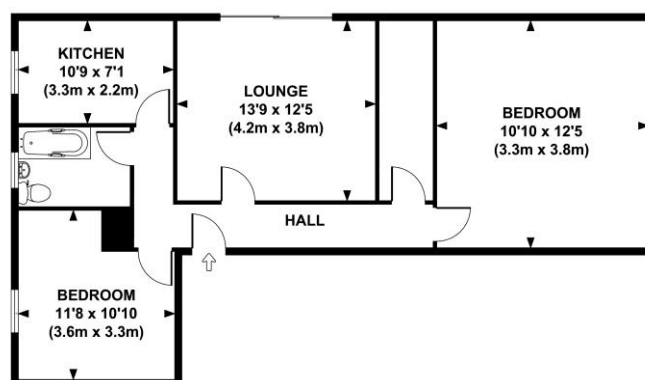
13 Priory Crescent, Aylesbury HP19 9NZ

A two bedroom ground floor flat requiring complete modernisation

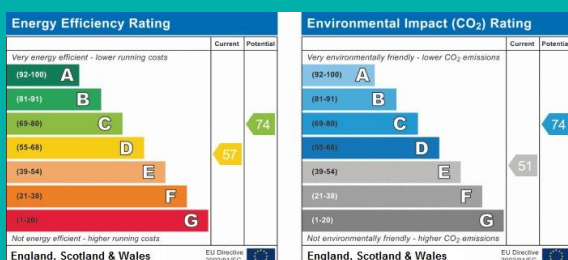


Overview

- REQUIRES MODERNISATION
- TWO DOUBLE BEDROOMS
- GROUND FLOOR
- LOUNGE
- KITCHEN
- BATHROOM
- OPEN HOUSE 23/6/18
- ALL OFFERS BY 26/6/18
- MUST BE SOLD



GROSS INTERNAL AREA (Approx) 782 sq.ft / 72 sq.m
FOR IDENTIFICATION ONLY-NOT TO SCALE



26 Temple Street, Aylesbury,
Buckinghamshire, HP20 2RQ
T: 01296 422171
E: aylesbury@martinkemps.com
www.martinkemps.com

55 North Street, Thame,
Oxfordshire, OX9 3BH
T: 01844 260909
E: thame@martinkemps.com