

111 Great Meadow Way, Aylesbury. HP19 7GX

A two bedroom mid terraced house on the popular Fairford Leys development.

Guide Price of **£272,500**

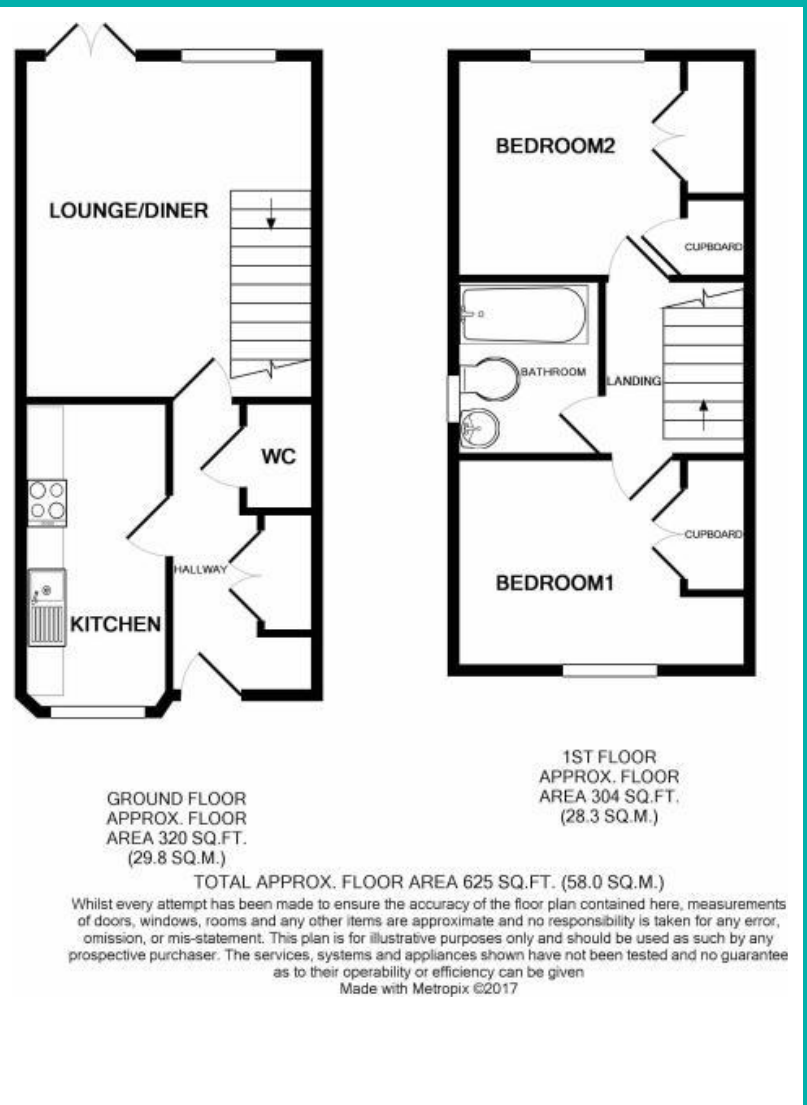
111 Great Meadow Way, Aylesbury. HP19 7GX

A well presented two double bedroom house with garage and drive



Overview

- Mid terraced
- Located on the popular Fairford Leys development
- Good size lounge/diner
- Downstairs WC
- Fully fitted kitchen with breakfast bar
- Two double bedrooms with storage
- Family bathroom
- Driveway to the rear
- Garage
- Short walk to local shops and Aylesbury town centre
- Call now to view



Energy Efficiency Rating

	Current	Potential
Very energy efficient - lower running costs		
(92-100) A		90
(81-91) B		
(69-80) C	72	
(55-68) D		
(39-54) E		
(21-38) F		
(1-20) G		
Not energy efficient - higher running costs		
England, Scotland & Wales		EU Directive 2002/91/EC

26 Temple Street, Aylesbury,
Buckinghamshire, HP20 2RQ
T: 01296 422171
E: aylesbury@martinkemps.com
www.martinkemps.com

55 North Street, Thame,
Oxfordshire, OX9 3BH
T: 01844 260909
E: thame@martinkemps.com