



24 Dormer Close, Aylesbury, HP21 8UZ

A fantastic three bedroom family home renovated to a high standard throughout.

Guide Price of **£279,950**

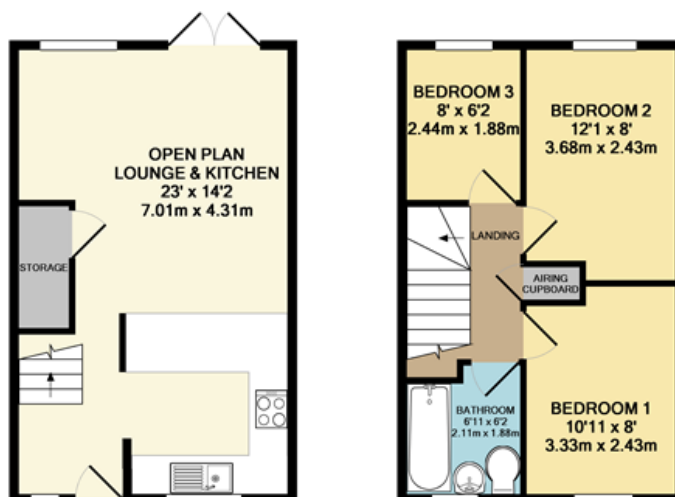
24 Dormer Close, Aylesbury, HP21 8UZ

A three bedroom family home with off road parking and detached garage.



Overview

- Mid terraced
- Open plan layout downstairs
- Recently fitted new modern kitchen
- Large lounge/dining area
- French doors opening out to a well maintained garden
- Two double & one large single bedroom
- Family bathroom
- Off road parking to front
- Detached garage with additional parking in front
- Cul-de-sac location



GROUND FLOOR
APPROX. FLOOR
AREA 325 SQ.FT.
(30.2 SQ.M.)

1ST FLOOR
APPROX. FLOOR
AREA 325 SQ.FT.
(30.2 SQ.M.)

TOTAL APPROX. FLOOR AREA 650 SQ.FT. (60.4 SQ.M.)

Whilst every attempt has been made to ensure the accuracy of the floor plan contained here, measurements of doors, windows, rooms and any other items are approximate and no responsibility is taken for any error, omission, or mis-statement. This plan is for illustrative purposes only and should be used as such by any prospective purchaser. The services, systems and appliances shown have not been tested and no guarantee as to their operability or efficiency can be given
Made with Metropix ©2018

Energy Efficiency Rating

	Current	Potential
Very energy efficient - lower running costs		
(92-100) A		92
(81-91) B		
(69-80) C		
(55-68) D	61	
(39-54) E		
(21-38) F		
(1-20) G		
Not energy efficient - higher running costs		

26 Temple Street, Aylesbury,
Buckinghamshire, HP20 2RQ
T: 01296 422171
E: aylesbury@martinkemps.com
www.martinkemps.com

55 North Street, Thame,
Oxfordshire, OX9 3BH
T: 01844 260909
E: thame@martinkemps.com

IMPORTANT: we would like to inform prospective purchasers that these sales particulars have been prepared as a general guide only. A detailed survey has not been carried out, nor the services, appliances and fittings tested. Room sizes should not be relied upon for furnishing purposes and are approximate. If floor plans are included, they are for guidance only and illustration purposes only and may not be to scale. If there are any important matters likely to affect your decision to buy, please contact us before viewing the property. M822