



35 Walton Way, Aylesbury, Bucks. HP21 7JJ

A 3 bedroom period semi-detached property in need of renovation throughout.

Guide Price of **£299,999**

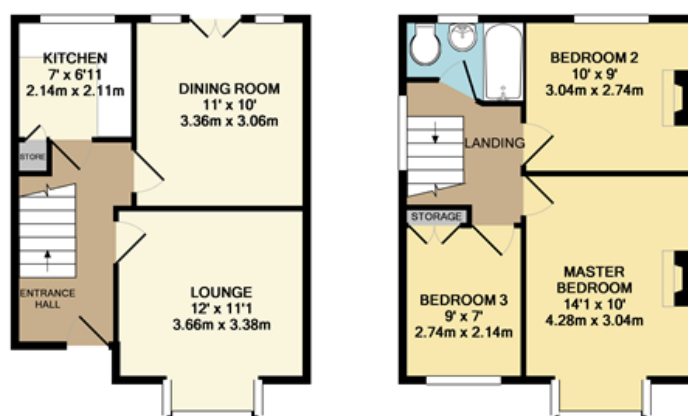
# 35 Walton Way, Aylesbury, Bucks. HP21 7JJ

A 3 bedroom semi-detached house with potential to extend subject to planning permission.



## Overview

- Semi-detached
- 1930/1940s style
- In need of renovation
- Three bedrooms
- Two reception rooms
- Double garage
- Potential to extend STPP
- South side location
- Call now to view



26 Temple Street, Aylesbury,  
Buckinghamshire, HP20 2RQ  
T: 01296 422171  
E: aylesbury@martinkemps.com  
www.martinkemps.com

55 North Street, Thame,  
Oxfordshire, OX9 3BH  
T: 01844 260909  
E: thame@martinkemps.com