



211A Woodford Road

Woodford, Stockport, SK7 1QE

Asking Price Of
£1,050,000

- Gated modern detached home
- Spacious parking area
- Large garage
- Rear patio and good size garden
- Open plan living kitchen/ dining/ sitting room
- Living room
- Office
- Master bedroom suite with dressing room and en-suite



HALL 24' 4" x 9' 5" (7.42m x 2.87m)

LIVING ROOM 21' 1" x 11' 9" (6.43m x 3.58m)

KITCHEN 34' 6" x 29' 6" (10.52m x 8.99m)

STUDY 10' 4" x 7' 11" (3.15m x 2.41m)

UTILITY ROOM 10' 5" x 5' 7" (3.18m x 1.7m)

WC 6' 2" x 5' (1.88m x 1.52m)

GARAGE 17' 1" x 16' 5" (5.21m x 5m)

STORAGE 17' 1" x 11' 4" (5.21m x 3.45m)

BEDROOM ONE 17' 9" x 14' 5" (5.41m x 4.39m)

DRESSING ROOM 8' 6" x 7' 1" (2.59m x 2.16m)

ENSUITE 8' 6" x 7' 1" (2.59m x 2.16m)

BEDROOM TWO 14' 5" x 11' 5" (4.39m x 3.48m)

BEDROOM THREE 11' 10" x 10' 4" (3.61m x 3.15m)

LANDING 21' 2" x 14' 5" (6.45m x 4.39m)

BEDROOM FOUR 12' 4" x 9' 3" (3.76m x 2.82m)

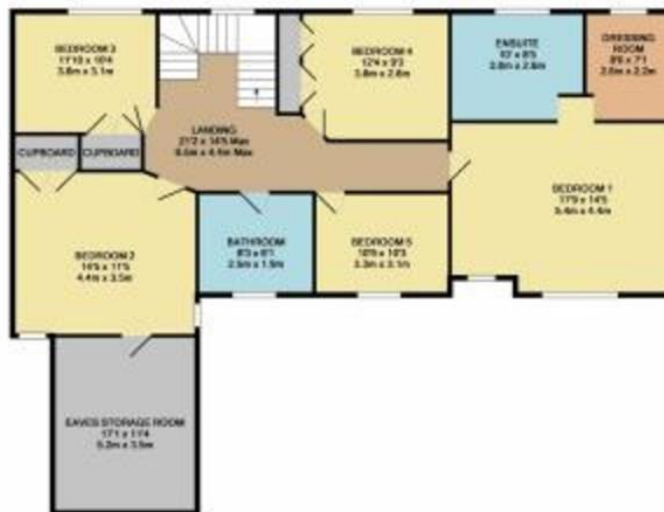
BATHROOM 8' 3" x 6' 1" (2.51m x 1.85m)

BEDROOM FIVE 10' 9" x 10' 3" (3.28m x 3.12m)









COUNCIL TAX BAND

Tax band F

TENURE

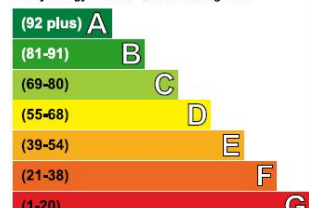
Freehold

LOCAL AUTHORITY

Stockport Metropolitan Borough Council

Energy Efficiency Rating

Very energy efficient - lower running costs



Hale Office:
190A Ashley Road
Hale
Cheshire
WA15 9SF
Tel: 0161 929 8546

Wilmslow Office:
Blackbox
Beech Lane
Wilmslow
Cheshire SK9 5ER
Tel: 01625 523605

Email:
hale@benzonbunch.co.uk
info@benzonbunch.co.uk
Website:
www.bensonbunch.co.uk

Agents Note: Whilst every care has been taken to prepare these sales particulars, they are for guidance purposes only. All measurements are approximate and for general guidance purposes only and whilst every care has been taken to ensure their accuracy, they should not be relied upon and potential buyers are advised to recheck the measurements