



## Residential Plot

Monzie, By Crieff, PH7 4HE



A Rare Single Plot Enjoying an Enviably Location with Full P/P

Offers Over £110,000

IRVING  
GEDDES  
w.s. | solicitors | estate agents





Irving Geddes are delighted to offer for sale this residential plot enjoying an excellent location with a superb open outlook. Situated c.2.5mls from Strathearn's principal town of Crieff on a quiet road off the A822, stretching from the small hamlet of Gilmerton to the famous Glenturret Distillery (4miles) and onto the A85 at the west side of Crieff. Full detailed planning permission exists for a single 1.5 storey property although provision is in place for two adjoining 1.5 storey properties should this option be preferred. Services are available nearby and further details on this are available upon request.

The plot is c.1/3acre in size and enjoys an elevated position with far reaching views, bordered by the Monzie Estate and Monzie rural Joinery to the West and the road to the east with the beautiful historic Monzie Parish Church adjacent.

Full detail relating to the planning permission can be obtained via the Perth & Kinross planning website using the links below:

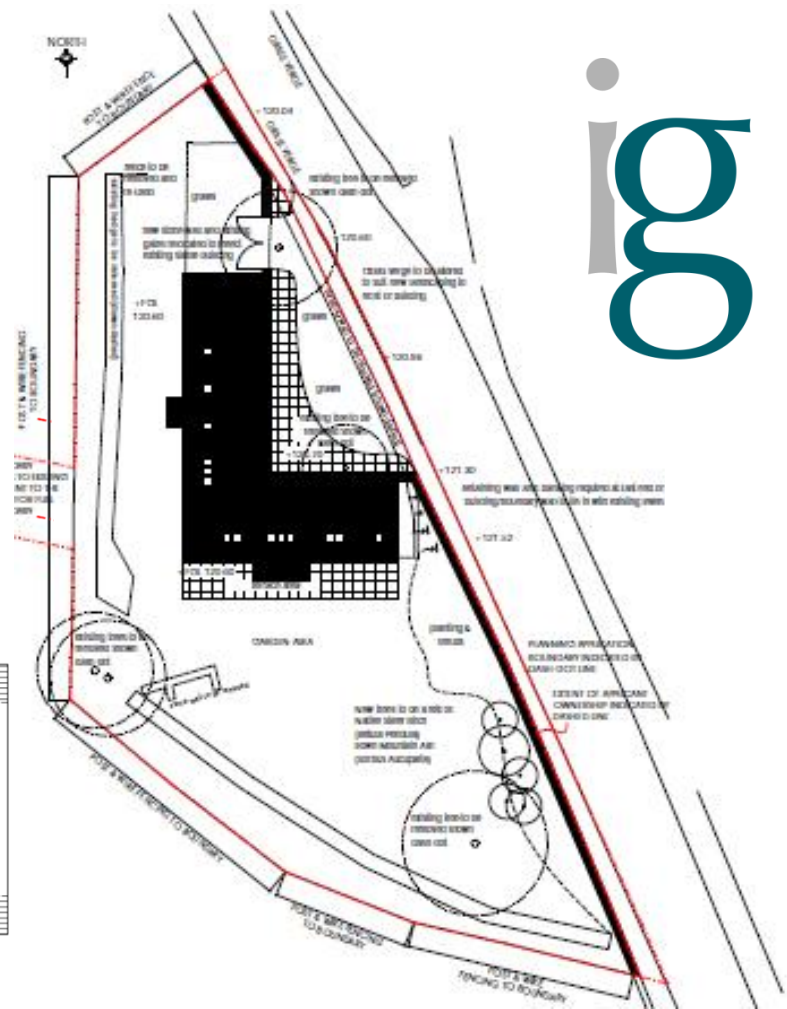
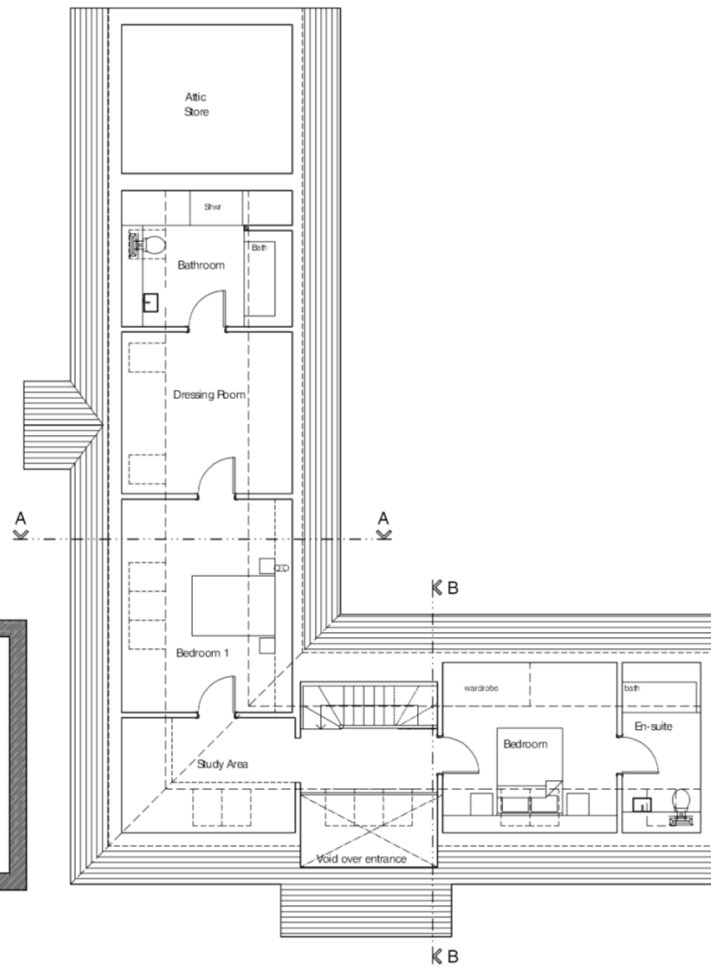
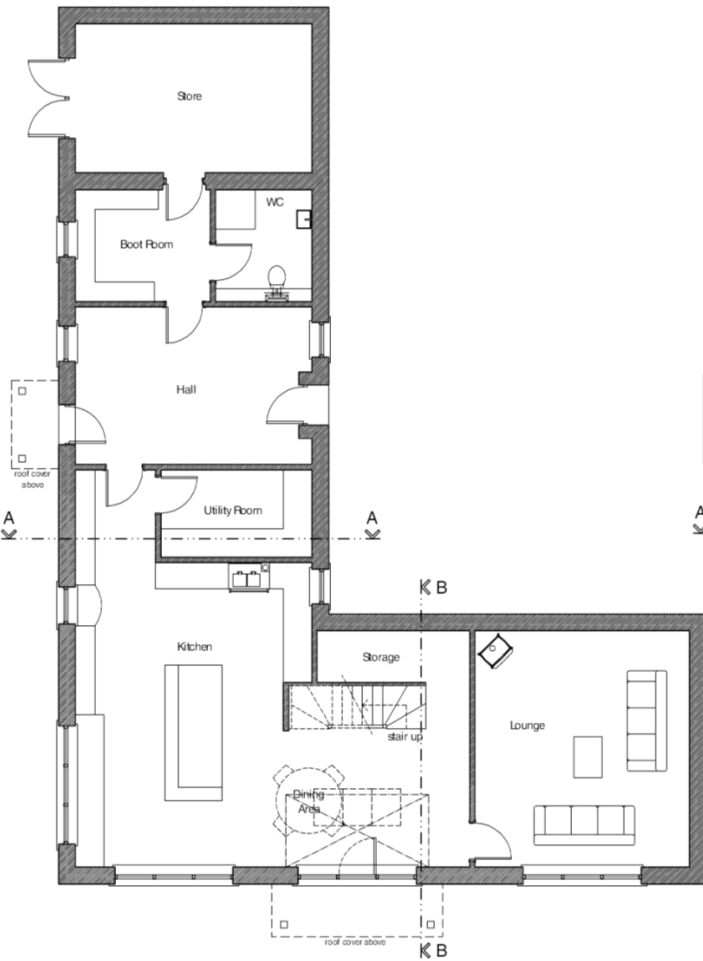
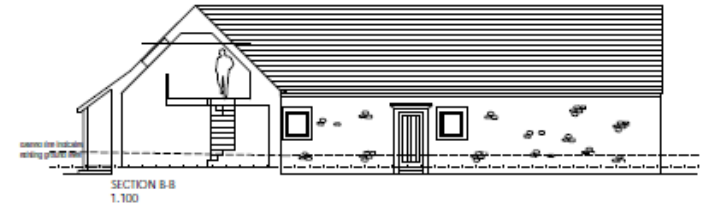
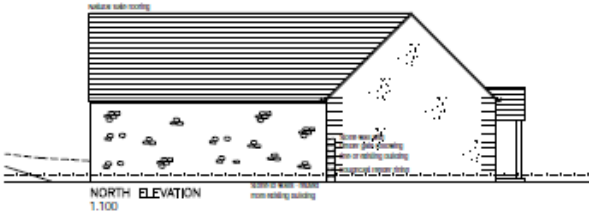
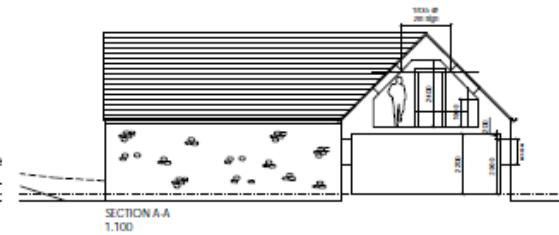
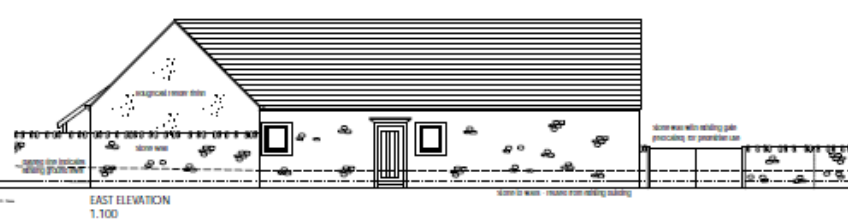
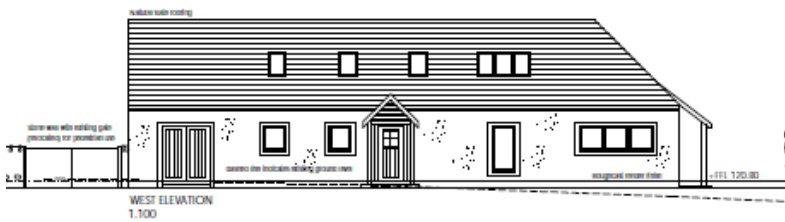
<http://planningapps.pkc.gov.uk/online-applications/applicationDetails.do?activeTab=documents&keyVal=L8J5E4MK6H000>

<http://planningapps.pkc.gov.uk/online-applications/applicationDetails.do?activeTab=documents&keyVal=NOTPIIMK00I00>

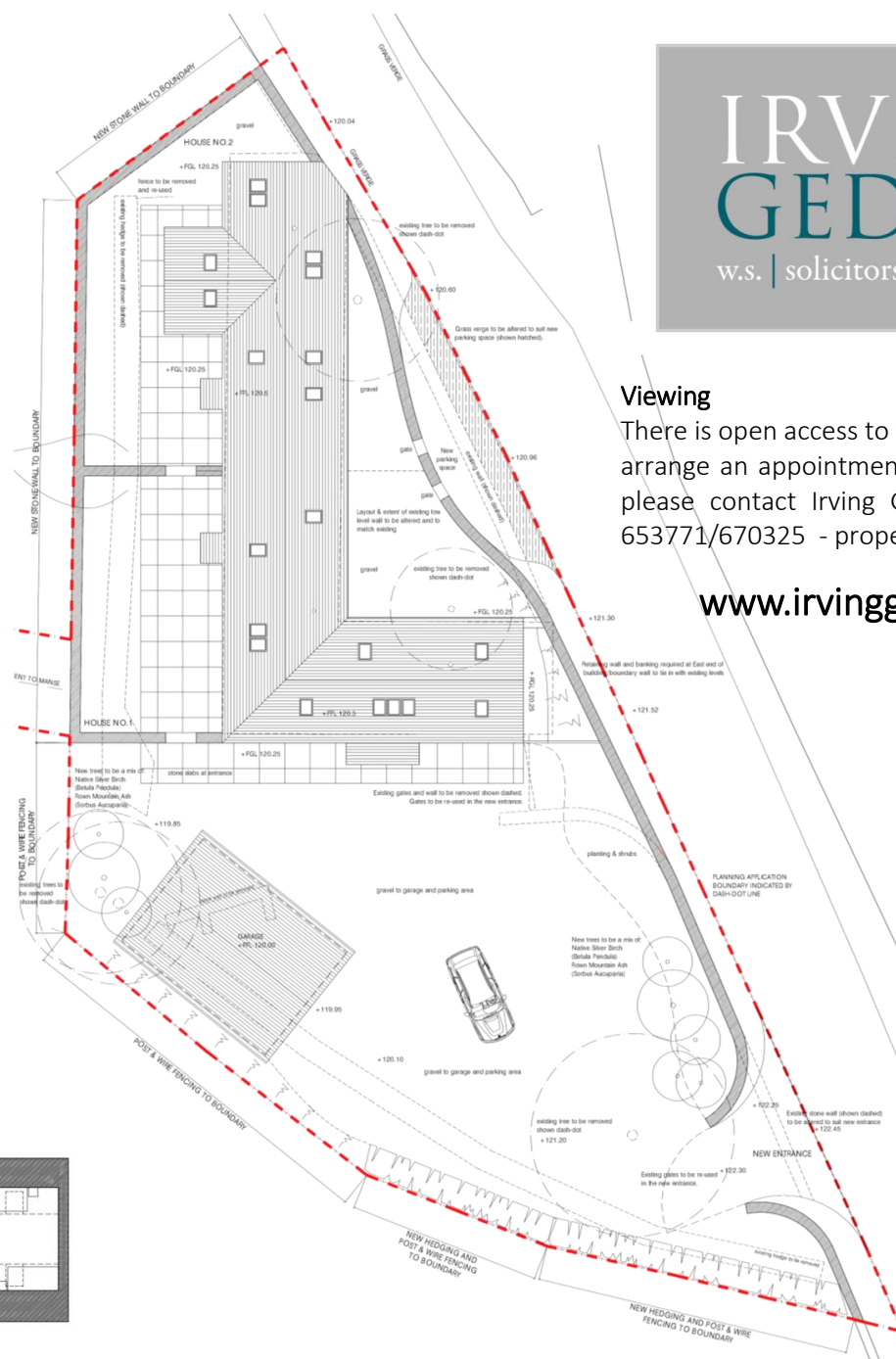
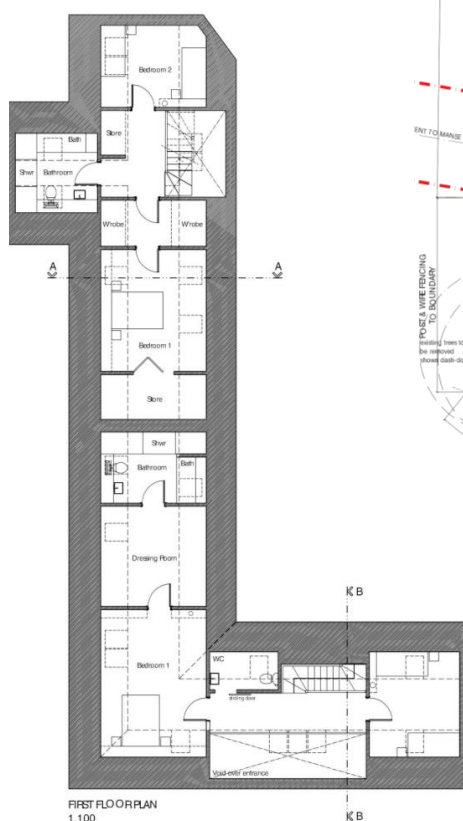
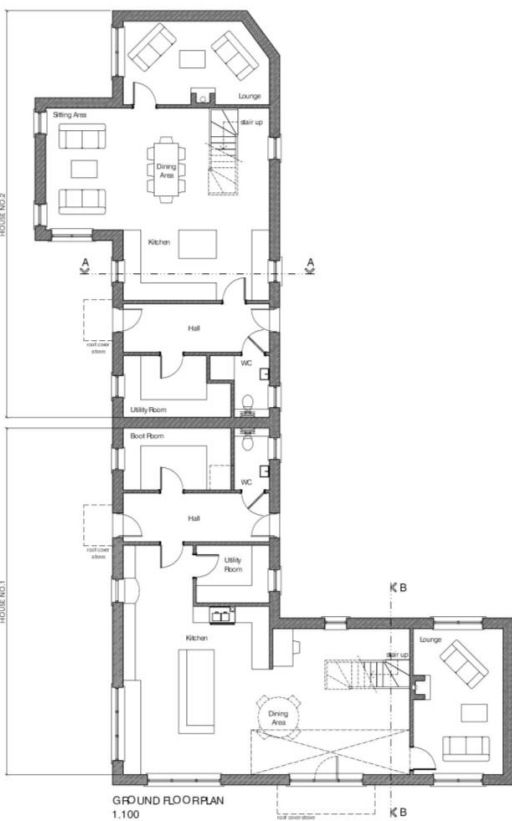
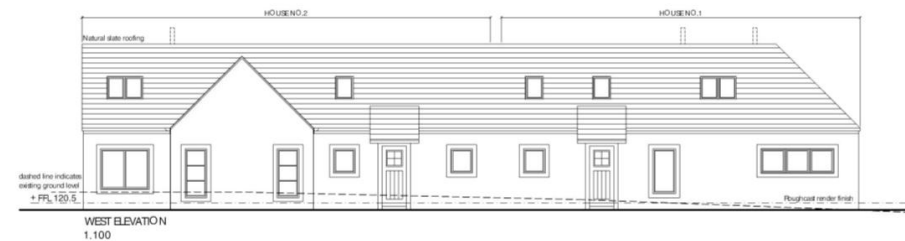




### Single Dwelling



## Dual Dwelling



IRVING  
GEDDES

w.s. | solicitors | estate agents

### Viewing

There is open access to view the site but to arrange an appointment with the owner/agent please contact Irving Geddes W.S. on 01764 653771/670325 - [property@irvinggeddes.co.uk](mailto:property@irvinggeddes.co.uk)

[www.irvinggeddes.co.uk](http://www.irvinggeddes.co.uk)

ig

Thinking of selling?

Call us now for a free valuation of your own property

Crieff

25 West High Street, PH7 4AU  
Tel: 01764 653771

Comrie

1 Drummond Street, PH6 2DW  
Tel: 01764 670325

Aberfeldy

25 Bank Street, PH15 2DE  
Tel: 01887 822722