



Scandinavian Style Lodge

Three Double Bedrooms

Master En-Suite

Open Plan Living

Fully Fitted Kitchen

Excellent on-site Facilities

Private Fishing Rights

Stunning Views of Loch Tay



IRVING
GEDDES
w.s. | solicitors | estate agents

Horseshoe Bay, Loch Tay Highland Lodges, By Killin, FK21 8TY

Guide Price £155,000

Horseshoe Bay Lodge, Loch Tay Highland Lodges, By Killin

A detached Scandinavian style holiday lodge nestling on the banks of Loch Tay, offering breathtaking views of the Loch and located close to the picturesque tourist village of Killin. Nearby local activities include golf, watersports, and hiking. This property offers extremely well appointed accommodation and is presented in immaculate condition. Horseshoe Lodge enjoys an enviable private position next to woodland where roe deer and red squirrels live.

Accommodation comprises; bright open-plan **Lounge/Dining area, Fully Fitted Kitchen, Bathroom with Shower and 3 Double Bedrooms (master ensuite)**. To the front & side of the property is a partially covered terrace (East & South facing) offering all day sun and tremendous views towards Loch Tay and the surrounding hills. The property benefits from electric heating, double glazing, loft space and private parking.

A wonderful 'get-away' and a fantastic investment opportunity. A fully furnished and equipped lodge, currently utilised as a holiday home. The property may be sold fully furnished, enabling a purchaser to use the lodge immediately or rent it out. This property is FREEHOLD.

Directions

From Killin head North and then West on the A827 towards Kenmore. Continue for approximately 4 miles until reaching a sign for 'Loch Tay Highland Lodges'. The property is located at the bottom of the park to the right, Horseshoe is the last lodge next to the wood.

Lounge/Dining Rm	19'2" x 15'8"	Kitchen	8'4" x 8'0"
Bedroom One	8'2" x 8'0"	Bedroom Two	10'0" x 7'8"
Bedroom Three	9'8" x 7'8"	Bathroom	8'0" x 6'6"

Additional Information

The Lodge is part of Loch Tay Highland Lodge Park :

www.lochtay-vacations.co.uk

Please contact Irving Geddes for further information.

www.irvinggeddes.co.uk

Viewing

Strictly by appointment through Irving Geddes W.S. on 01887 822722

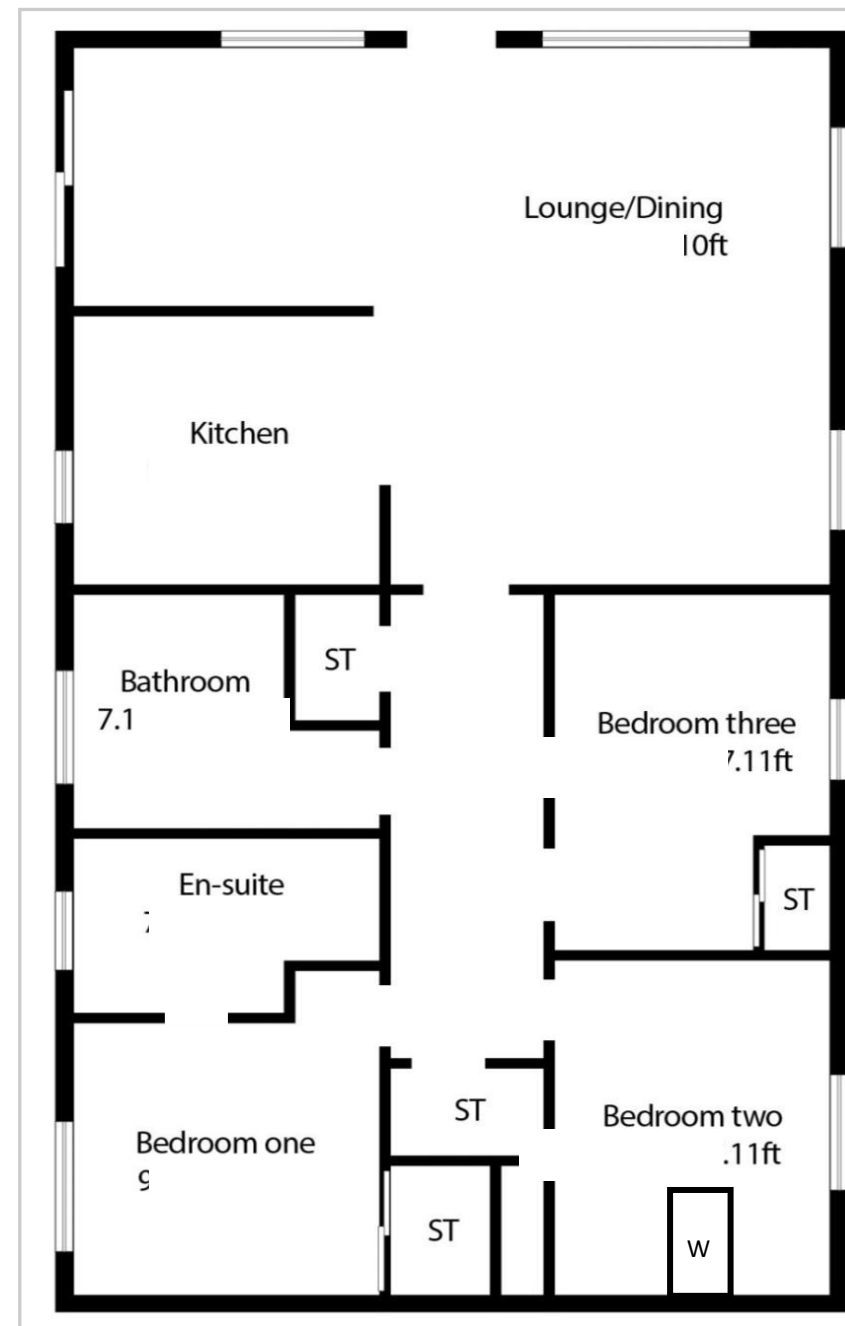




These particulars are believed to be correct, but their accuracy is not guaranteed and they do not form part of any contract.



These particulars are believed to be correct, but their accuracy is not guaranteed and they do not form part of any contract.



Crieff
25 West High Street, PH7 4AU
Tel: 01764 653771

Comrie
1 Drummond Street, PH6 2DW
Tel: 01764 670325

Aberfeldy
25 Bank Street, PH15 2BB
Tel: 01887 822722