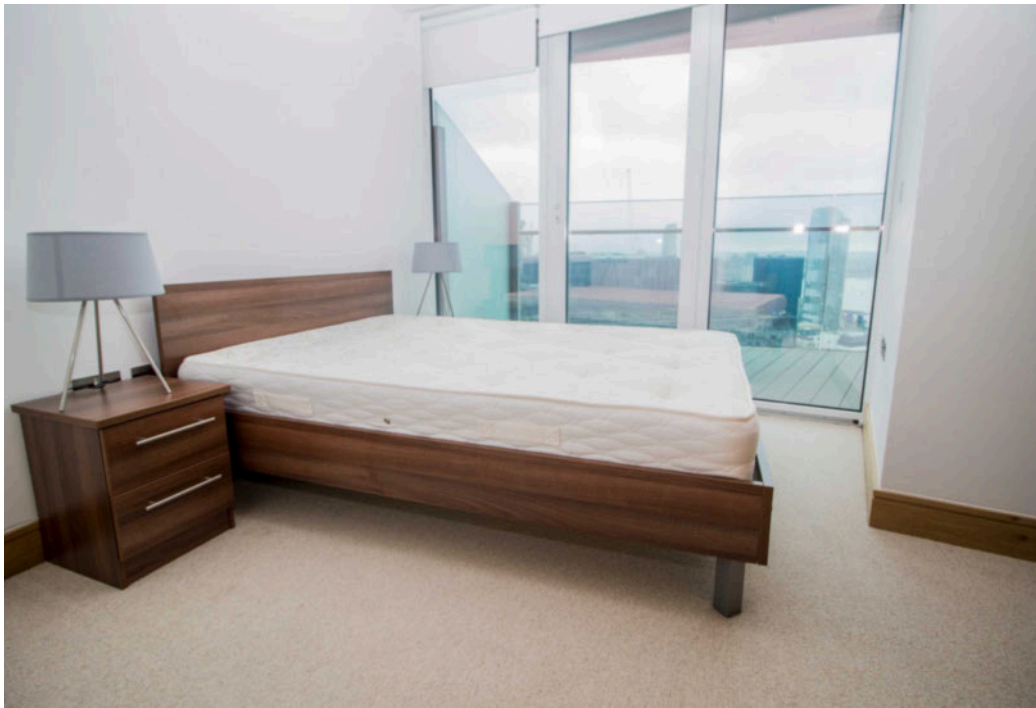




## Arena Tower, Crossharbour Plaza, Canary Wharf, E14

Asking price **£525,000** | Leasehold





# Arena Tower, Crossharbour Plaza, Canary Wharf, E14

-  1 Bedroom
-  1 Bathroom
-  1 Reception
-  Balcony
-  Gymnasium
-  Local Amenities
-  24-Hour Concierge
-  0.5 MI Canary Wharf

A stunning one bedroom apartment arranged over 547 sq ft set within an impressive development located by Millwall Inner dock and within easy reach of Canary Wharf. Features include a bright living room with a well equipped open-plan kitchen with modern integrated appliances, wood flooring, recessed lighting throughout, large floor-to-ceiling glazing, a stylish fully tiled bathroom, and a large balcony accessed from both the living area and the bedroom.

Residents have the benefit of 24-hour concierge, a cinema and access to a high spec gym/pool. The

development is located close to the local amenities and only a 4 minute walk to the Crossharbour DLR Station. The amenities and transport links of Canary Wharf are also within walking distance - the Canary Wharf Shopping Centre, shops, cafes, bars and restaurants and the Canary Wharf Underground and the Elizabeth Line service for high speed connection throughout the Capital.

<b>Tenure:</b>	Leasehold (980 years remaining)	<b>Local Authority:</b>	Tower Hamlets
<b>Ground Rent:</b>	£500 p.a.	<b>Council Tax Band:</b>	F
<b>Service Charge:</b>	£4,500 p.a.	<b>EPC:</b>	B



# Floorplan

547 sq ft | 50.8 sq m

Baltimore Tower, E14  
Approximate Gross Internal Area = 50.8 sq m / 547 sq ft



Chase Evans make every attempt to ensure accuracy, however all measurements are approximate.  
All aspects of this floor plan are for illustrative purposes only and not to scale. Errors and omissions excepted (E&OE).

## Pan Peninsula

Pan Peninsula, 1 Millharbour, London, E14 9XP

## Sales

020 7536 7901 | [panp.sales@chaseevans.com](mailto:panp.sales@chaseevans.com)

## We're here to help.

IMPORTANT NOTICE - These particulars have been prepared in good faith and they are not intended to constitute part of an offer or contract. We have not performed a structural survey on this property and the services, appliances and specific fittings have not been tested. All photographs, measurements, floor plans and distances referred to are given as a guide and should not be relied upon.

[chaseevans.com](https://chaseevans.com)