









Stock House, Elephant Park, Wansey Street, Elephant & Castle, SE17

Asking price **£560,000** | Leasehold



Stock House, Elephant Park, Wansey Street, Elephant & Castle, SE17

-  1 Bedroom
-  1 Bathroom
-  1 Reception
-  Balcony
-  Gymnasium
-  Local Amenities
-  24-Hour Concierge
-  0.2 MI Elephant & Castle

A well-proportioned one bedroom apartment situated in the prestigious South Gardens phase of Elephant Park. Our client's property benefits from a bright and spacious living space with a covered balcony. The open-plan kitchen and living room boasts floor-to-ceiling windows and large swing doors to the balcony, allowing ample natural light to fill the space.

The kitchen is fully equipped with modern appliances and sleek cabinetry. The bedroom offers plenty of storage space with its generous built in storage. The stylish bathroom is tiled throughout and provides extra shelving and storage. Additional features of the apartment include underfloor heating, wood flooring and recessed lighting

throughout, creating a cosy and elegant atmosphere.

Residents will also have access to a 24-hour concierge service, communal garden, café, crèche, residents' projector room and a rooftop space for inner city gardening or relaxing. There are a plethora of amenities located nearby One The Elephant including restaurants, cafés and a brand new Elephant and Castle Shopping Centre coming in 2025.

The development is located half a mile (or around a 10min walk) from Elephant & Castle National Rail and Underground stations, providing Underground and Rail services for commutes towards the City and West End.

Tenure:	Leasehold (250 years from 2015)	Local Authority:	Southwark Council
Ground Rent:	£300 p.a.	Council Tax Band:	D
Service Charge:	£4,900 p.a.	EPC:	B

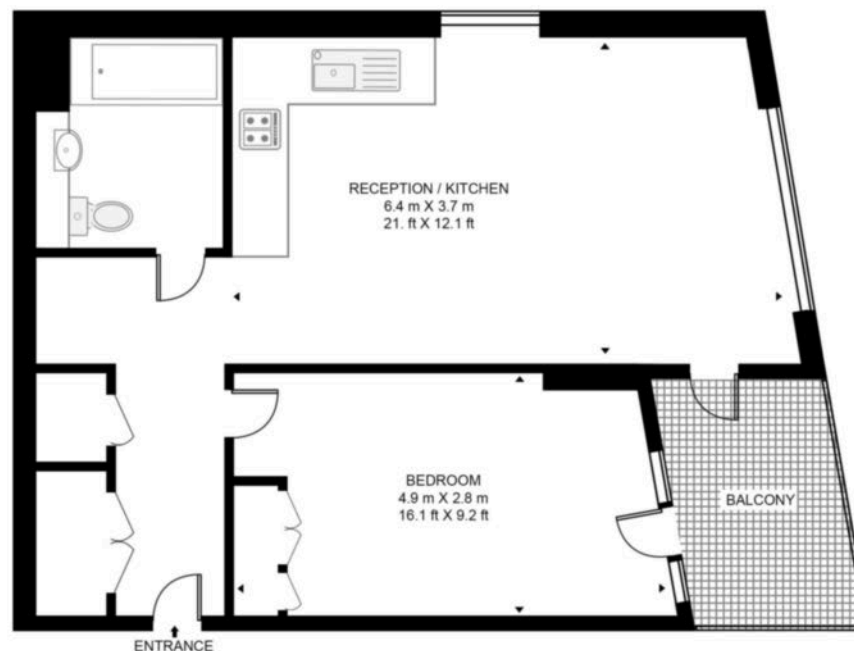


Floorplan

546 sq ft | 50.7 sq m



STOCK HOUSE, 29 WANSEY STREET, SE17
APPROXIMATE GROSS INTERNAL FLOOR AREA 546 SQ.FT (50.7 SQ.M)



Whilst every attempt has been made to ensure the accuracy of the floor plan contained here, measurements of door, windows, rooms and any other items are approximate and no responsibility is taken for any error, omission, or mis-statement. The plan for illustrative purposes only and should be used as such by any prospective purchaser. The services, system and appliances shown have not been tested and no guarantee as to their operability or efficiency can be given.

Elephant & Castle

One The Elephant, 5 St Gabriel Walk, London, SE1 6FA

Sales

020 3869 2898 | eandc.sales@chaseevans.com

We're here to help.

IMPORTANT NOTICE - These particulars have been prepared in good faith and they are not intended to constitute part of an offer or contract. We have not performed a structural survey on this property and the services, appliances and specific fittings have not been tested. All photographs, measurements, floor plans and distances referred to are given as a guide and should not be relied upon.

chaseevans.com

 Chase Evans