

Levy Building, Elephant Park, Elephant & Castle, SE17

Price **£575 per week** | Furnished



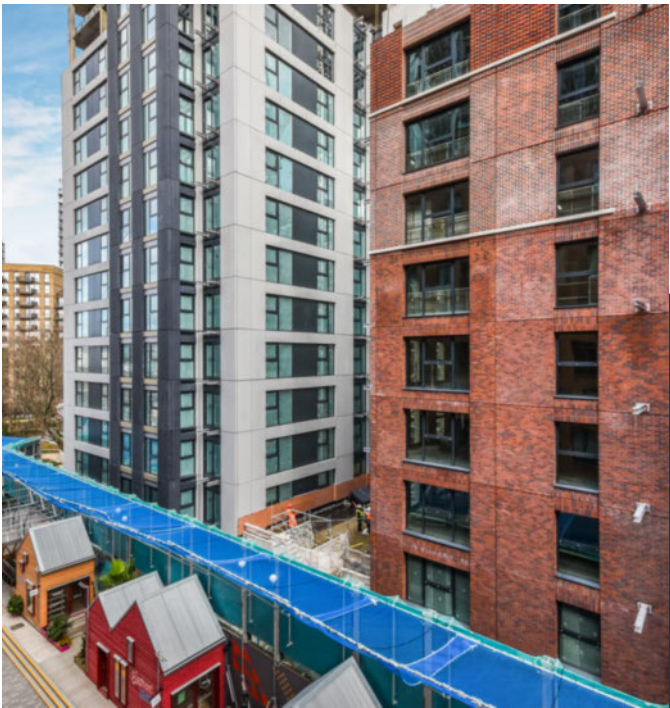
Levy Building, Elephant Park, Elephant & Castle, SE17

-  1 Bedroom
-  1 Bathroom
-  1 Reception
-  Balcony
-  24-Hour Concierge
-  Gym
-  Cycle Storage
-  Communal Gardens
-  0.3 MI Elephant & Castle

Spacious one bedroom apartment with a balcony set within the Levy Building, part of award-winning Elephant Park SE17 development. The generously sized accommodation consists of an elegant and bright, dual aspect open plan kitchen/ living area, a sizeable bedroom and a family bathroom. The private balcony is accessed from both, the living room and bedroom. Features include full height glazing, underfloor heating, ample wardrobe space, a modern fully integrated streamlined kitchen, wood floors and smart bathroom fittings.

The development offers lifestyle amenities such as 24-hour concierge services, access to residents' lounge, communal gardens and a roof terrace. Located close to Elephant and Castle National Rail and Underground stations, the development is superbly positioned for Underground and Rail services to the City and West End. The area is serviced by Thameslink, Southeastern, Bakerloo and Northern Line, opening a plethora of transport links.

Local Authority:	Southwark Council
Council Tax Band:	D
EPC:	B
Security deposit:	equivalent to 5 weeks' rent

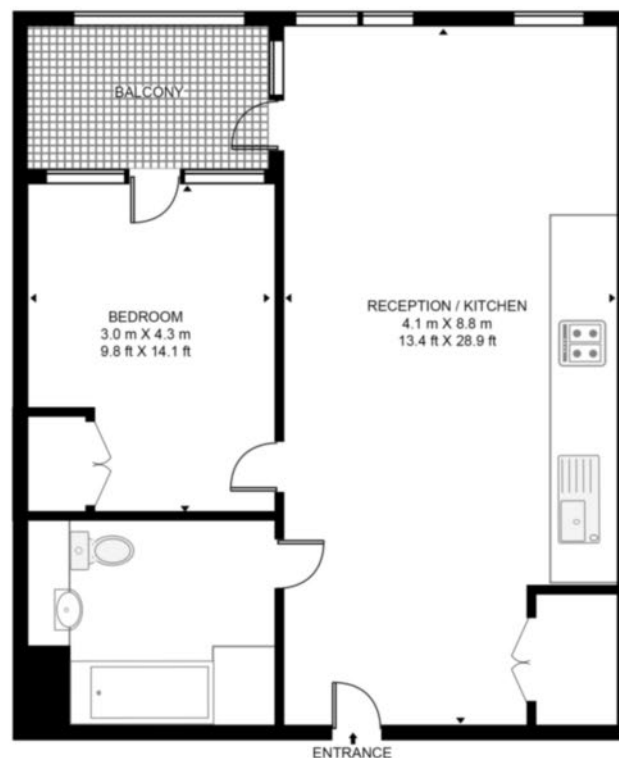


Floorplan

624 sq ft | 58 sq m



LEVY BUILDING, ELEPHANT PARK SE17
APPROXIMATE GROSS INTERNAL FLOOR AREA 624 SQ.FT (58 SQ.M)



Whilst every attempt has been made to ensure the accuracy of the floor plan contained here, measurements of door, windows, rooms and any other items are approximate and no responsibility is taken for any error, omission, or mis-statement. The plan for illustrative purposes only and should be used as such by any prospective purchaser. The services, system and appliances shown have not been tested and no guarantee as to their operability or efficiency can be given.

Elephant & Castle

One The Elephant, 5 St Gabriel Walk, London, SE1 6FA

Lettings

020 3869 2888 | eandc.lettings@chaseevans.com

We're here to help.

IMPORTANT NOTICE - These particulars have been prepared in good faith and they are not intended to constitute part of an offer or contract. We have not performed a structural survey on this property and the services, appliances and specific fittings have not been tested. All photographs, measurements, floor plans and distances referred to are given as a guide and should not be relied upon.

chaseevans.com

 Chase Evans