

## Kings Tower, Chelsea Creek, Fulham, SW6

Price **£660 per week** | Furnished





# Kings Tower, Chelsea Creek, Fulham, SW6

-  Studio
-  1 Bathroom
-  1 Reception
-  Private Balcony
-  Residents Gym
-  Pool & Spa
-  24-Hour Concierge
-  Local Amenities
-  0.1 MI Imperial Wharf

Brand new luxury studio apartment situated in this highly desirable waterside development Chelsea Creek in Fulham SW6. Accommodation spans 474 sq ft and includes a generous open plan living room/sleeping area, high spec kitchen with fully integrated appliances, marble bathroom décor with smart fittings and fixtures and a private balcony. Features include wood flooring, floor to ceiling glazing, built-in wardrobe, underfloor heating and high-end furnishing throughout.

Residents benefit from close transport links, 24-hour concierge, communal gymnasium, swimming

pool and spa. The development is located very close to many local amenities including restaurants, bars, cafes & shops on King's Road and at Fulham Broadway. Imperial Wharf Overground Station is located within a short walk and provides a valuable link to many destinations across London.

Local Authority:	Hammersmith and Fulham
Council Tax Band:	TBC
EPC:	B
Security deposit:	equivalent to 5 weeks' rent

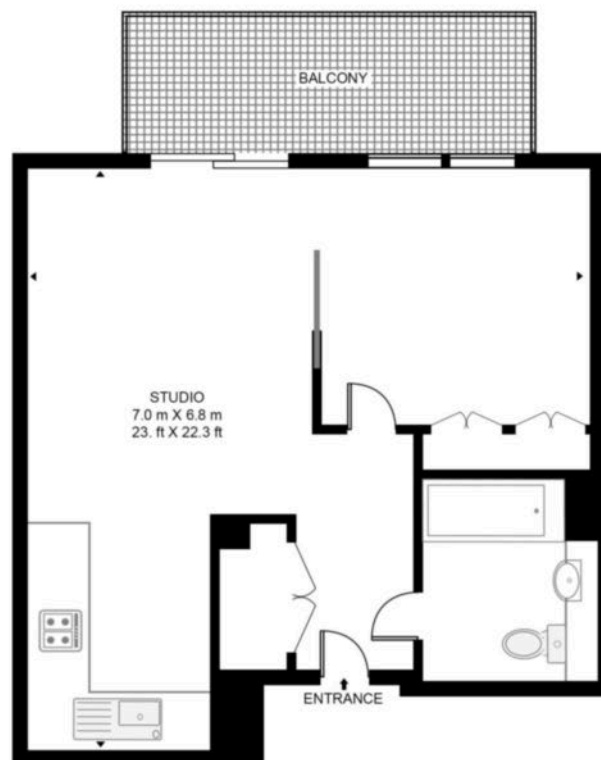


# Floorplan

474 sq ft | 44.0 sq m



**KINGS TOWER, CHELSEA CREEK, SW6**  
APPROXIMATE GROSS INTERNAL FLOOR AREA 474 SQ.FT (44 SQ.M)



Whilst every attempt has been made to ensure the accuracy of the floor plan contained here, measurements of door, windows, rooms and any other items are approximate and no responsibility is taken for any error, omission, or mis-statement. The plan for illustrative purposes only and should be used as such by any prospective purchaser. The services, system and appliances shown have not been tested and no guarantee as to their operability or efficiency can be given.

## Elephant & Castle

One The Elephant, 5 St Gabriel Walk, London, SE1 6FG

## Lettings

020 3869 2888 | [eandc.lettings@chaseevans.com](mailto:eandc.lettings@chaseevans.com)

**We're here to help.**

IMPORTANT NOTICE - These particulars have been prepared in good faith and they are not intended to constitute part of an offer or contract. We have not performed a structural survey on this property and the services, appliances and specific fittings have not been tested. All photographs, measurements, floor plans and distances referred to are given as a guide and should not be relied upon.

[chaseevans.com](https://chaseevans.com)

 Chase Evans