



The Heron, Milton Court, City Of London, EC2Y

Price **£580 per week** | Furnished



The Heron, Milton Court, City Of London, EC2Y



Studio



1 Bathroom



1 Reception



Balcony



Gymnasium



Local Amenities



24-Hour Concierge

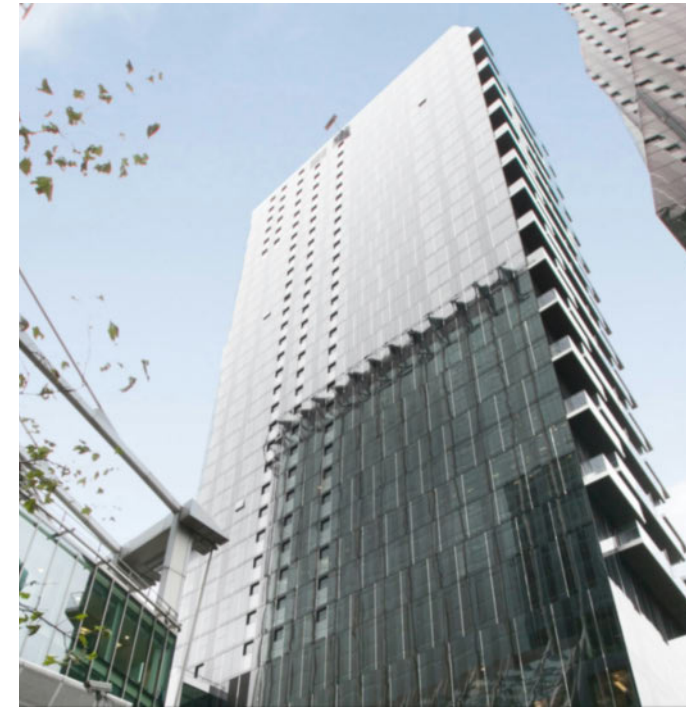


0.2 MI Moorgate

A stunning modern studio apartment set in The Heron, the award winning landmark development located to both Moorgate and Barbican stations. This property boast a large open plan living area, semi-separate bedroom area and an ample sized living area.

Features include modern, fully integrated kitchen appliances, a stow-away double bed, plenty of innovative built-in storage, tiled flooring throughout, under-floor heating, air-conditioning and floor to ceiling glazing to the living room affording far reaching city views.

The development benefits from access to a spa and gymnasium, private roof top club and 24-hour concierge service. The Underground stations of Moorgate, Liverpool Street and Barbican are all within easy reach. Liverpool Street and Moorgate also offer National Rail services. The flat is well positioned for access to the Barbican Arts Centre, Smithfield Market, and all the bars and restaurants of the City and Shoreditch.



Local Authority:

City of London

Council Tax Band:

E

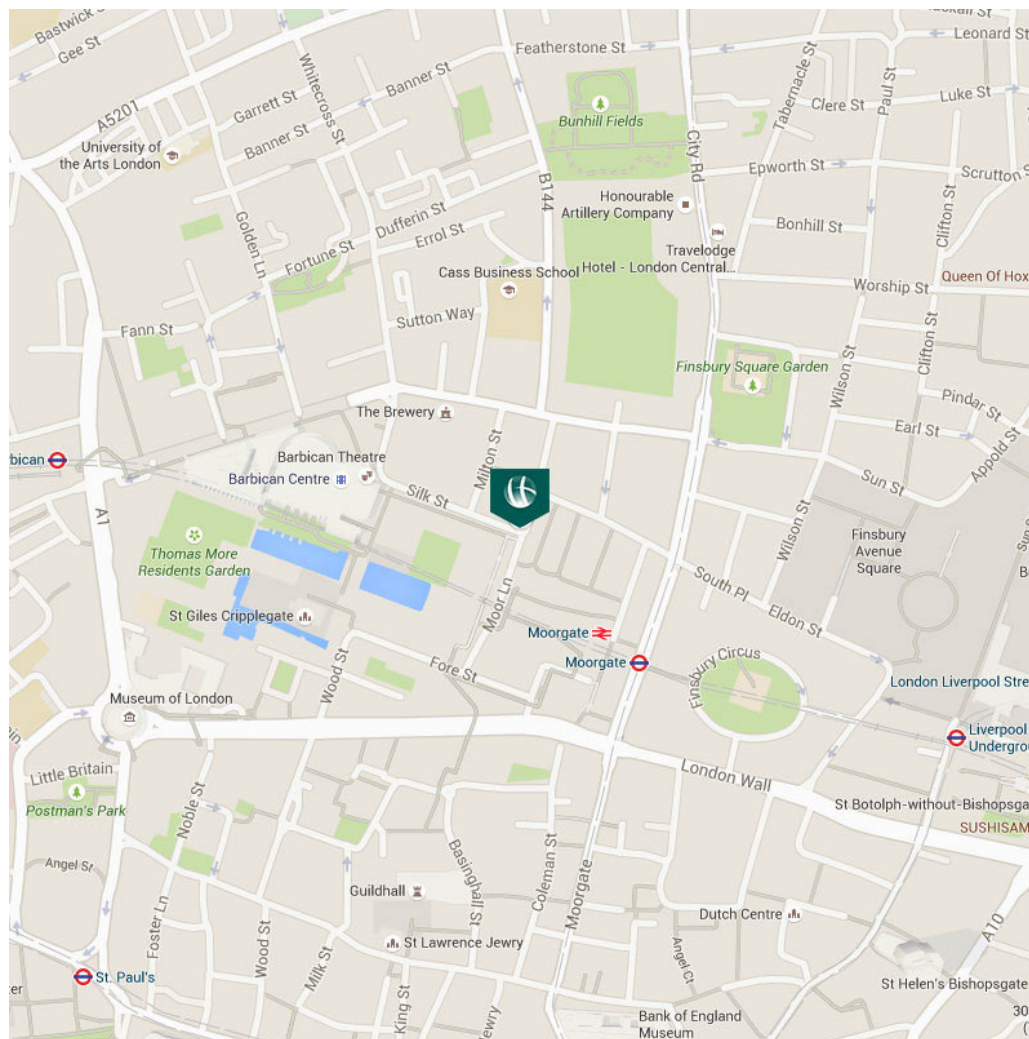
EPC:

C

Security deposit:

equivalent to 5 weeks' rent

398 sq ft | 36 sq m



122 Whitechapel High Street, London, E1 7PT

020 7247 3888 | city.lettings@chaseevans.co.uk

IMPORTANT NOTICE - These particulars have been prepared in good faith and they are not intended to constitute part of an offer or contract. We have not performed a structural survey on this property and the services, appliances and specific fittings have not been tested. All photographs, measurements, floor plans and distances referred to are given as a guide and should not be relied upon.

 Chase Evans