









Albion Court, Albion Place, Hammersmith, W6

Asking price **£375,000** | Leasehold



Albion Court, Albion Place, Hammersmith, W6

-  Studio
-  1 Bathroom
-  1 Reception
-  Juliet Balcony
-  Bicycle Storage
-  Local Amenities
-  Nearby Parks
-  0.4 MI Hammersmith

A lovely studio with a juliet balcony and everything needed for convenient living located near the Thames in the secure development Albion Court, Albion Place, Hammersmith. The studio includes wood effect flooring, recessed lighting, a fitted kitchen with integrated appliances and gloss cabinetry, and a light, modern, fully tiled bathroom.

The development benefits from a secure gated entrance and bicycle storage. The neighbourhood is full of unique cafes, restaurants and pubs and there are also grocery stores moments from the property. There are cinemas nearby such as The

Chiswick Cinema, Riverside Studios and Vue Cinema London. Green spaces are also easily accessible with Ravenscourt Park and Furnival Gardens providing sporting facilities and ideal spaces to relax and take part in leisure activities.

The development is a short distance from several transport links which include Ravenscourt Underground and Hammersmith Underground stations (District & Piccadilly lines) providing valuable transport links for commutes to key destinations located across the Capital.

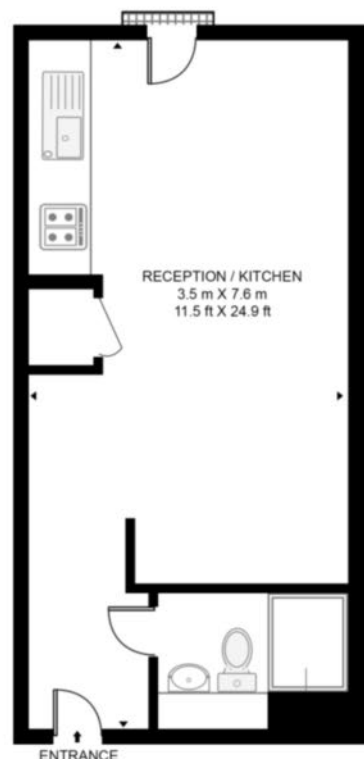


Tenure:	Leasehold (994 years remaining)	Local Authority:	Hammersmith and Fulham London
Ground Rent:	£400 p.a.	Council Tax Band:	C
Service Charge:	Approx. £2,483.24 p.a.	EPC:	C

Floorplan

288 sq ft | 26.8 sq m

ALBION COURT, W6
APPROXIMATE GROSS INTERNAL FLOOR AREA 288 SQ.FT (26.8 SQ.M)



Whilst every attempt has been made to ensure the accuracy of the floor plan contained here, measurements of door, windows, rooms and any other items are approximate and no responsibility is taken for any error, omission, or mis-statement. The plan for illustrative purposes only and should be used as such by any prospective purchaser. The services, system and appliances shown have not been tested and no guarantee as to their operability or efficiency can be given.

City & Aldgate

122 Whitechapel High Street, London, E1 7PT

Sales

020 7488 2777 | city.sales@chaseevans.com

We're here to help.

IMPORTANT NOTICE - These particulars have been prepared in good faith and they are not intended to constitute part of an offer or contract. We have not performed a structural survey on this property and the services, appliances and specific fittings have not been tested. All photographs, measurements, floor plans and distances referred to are given as a guide and should not be relied upon.

chaseevans.com

 Chase Evans