











Gosling Lodge, Greenwich Millennium Village, West Parkside, SE10

Asking price **£420,000** | Leasehold



Gosling Lodge, Greenwich Millennium Village, West Parkside, SE10

-  1 Bedroom
-  1 Bathroom
-  1 Reception
-  Balcony
-  Gated allocated Parking
-  Local Amenities
-  24-Hour Concierge
-  0.6 MI Westcombe Park

Beautifully presented one double bedroom property with balcony set within Gosling Lodge, Greenwich Millennium Village.

Accommodation spans 571 sq ft and includes an spacious open-plan living area with full height windows leading to a generous private balcony and a modern fitted corner kitchen suite with integrated appliances, recessed lighting, a good sized double bedroom with sliding door wardrobe for an efficient use of space and tiled bathroom suite with smart fittings and fixtures. Rarely available gated allocated parking included.

This luxury development, within the newest phase of Greenwich Millennium village, benefits from a 24-hour concierge service. There are several amenities located nearby including the Greenwich Shopping Park, an IMAX cinema, superstores and the O2 arena.

The O2 Arena offers an outstanding array of attractions and hosts a wide variety of different events, from sports to music, throughout the year. The apartment is located within 15mins (0.7mile) of Westcombe Park 20mins (1mile) of North Greenwich tube; these stations are serviced by Thameslink, Southeastern and Jubilee Lines. Commutes from here to Canary Wharf are just 2mins.

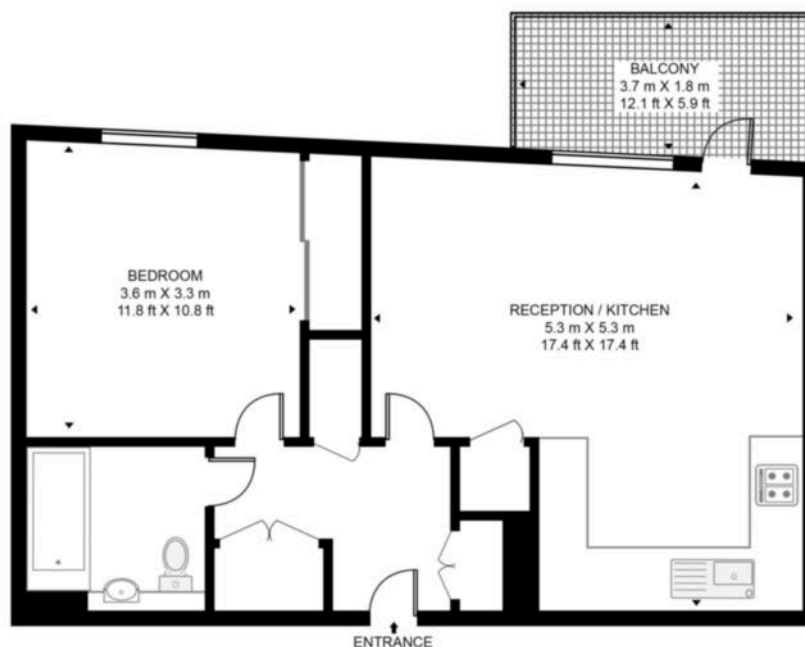
Tenure:	Leasehold (995 years remaining)	Local Authority:	Greenwich London
Ground Rent:	£400 p.a.	Council Tax Band:	D
Service Charge:	£2,500 p.a.	EPC:	B



Floorplan

571 sq ft | 53.1 sq m

GOSLING LODGE, SE10
APPROXIMATE GROSS INTERNAL FLOOR AREA 571 SQ.FT (53.1 SQ.M)



Whilst every attempt has been made to ensure the accuracy of the floor plan contained here, measurements of door, windows, rooms and any other items are approximate and no responsibility is taken for any error, omission, or mis-statement. The plan for illustrative purposes only and should be used as such by any prospective purchaser. The services, system and appliances shown have not been tested and no guarantee as to their operability or efficiency can be given.

Greenwich

1 Crescent Arcade, 279 Creek Road, London, SE10 9EJ

Sales

020 8853 8978 | greenwich.sales@chaseevans.com

We're here to help.

IMPORTANT NOTICE - These particulars have been prepared in good faith and they are not intended to constitute part of an offer or contract. We have not performed a structural survey on this property and the services, appliances and specific fittings have not been tested. All photographs, measurements, floor plans and distances referred to are given as a guide and should not be relied upon.

chaseevans.com

 **Chase Evans**