



Orion Point, The Odyssey, Crews Street, Docklands, E14

Asking price **£400,000** | Leasehold



Orion Point, The Odyssey, Crews Street, Docklands, E14

-  1 Bedroom
-  1 Bathroom
-  1 Reception
-  Balcony
-  Allocated Parking
-  Gymnasium
-  Local Amenities
-  24-Hour Concierge
-  0.5 MI Mudchute

An impressive, modern one bedroom apartment within the fantastic Orion Point riverside development. Accommodation spans 565 sq ft and comprises a spacious living area, fitted kitchen with integrated appliances and leads out to a spacious balcony with river views, wood flooring, floor to ceiling windows, underfloor heating, bright bedroom with access to the balcony and a good amount of fitted storage, large bathroom suite.

Residents have access to 24-hour concierge & a on-site gymnasium and allocated parking. This apartment is situated in a prime location just off

Westferry road, close to local amenities and offering great transport links with Mudchute DLR just a short walk and bus stops at the development entrance.

Tenure:	Leasehold (102 years remaining)	Local Authority:	Tower Hamlets
Ground Rent:	£247.35 p.a.	Council Tax Band:	E
Service Charge:	£3,500 p.a.	EPC:	B

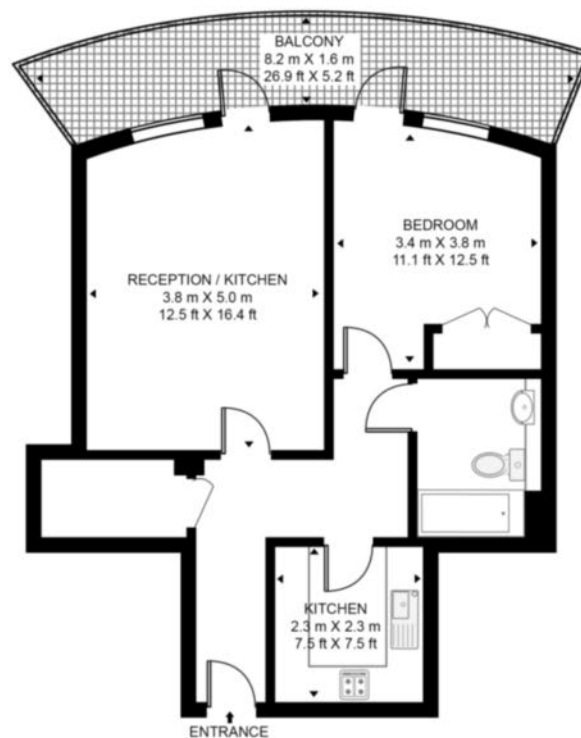


Floorplan

565 sq ft | 52.5 sq m



ORION POINT E14 APPROXIMATE GROSS INTERNAL FLOOR AREA 565 SQ.FT (52.5 SQ.M)



Whilst every attempt has been made to ensure the accuracy of the floor plan contained here, measurements of door, windows, rooms and any other items are approximate and no responsibility is taken for any error, omission, or mis-statement. The plan for illustrative purposes only and should be used as such by any prospective purchaser. The services, system and appliances shown have not been tested and no guarantee as to their operability or efficiency can be given.

Docklands

St David's Square, 320 Westferry Road, London, E14 3QL

Sales

020 7510 8445 | docklands.sales@chaseevans.co.uk

We're here to help.

IMPORTANT NOTICE - These particulars have been prepared in good faith and they are not intended to constitute part of an offer or contract. We have not performed a structural survey on this property and the services, appliances and specific fittings have not been tested. All photographs, measurements, floor plans and distances referred to are given as a guide and should not be relied upon.

chaseevans.com

 Chase Evans