

One Crown Place, The City, London, EC2A

Price **£775 per week** | Furnished



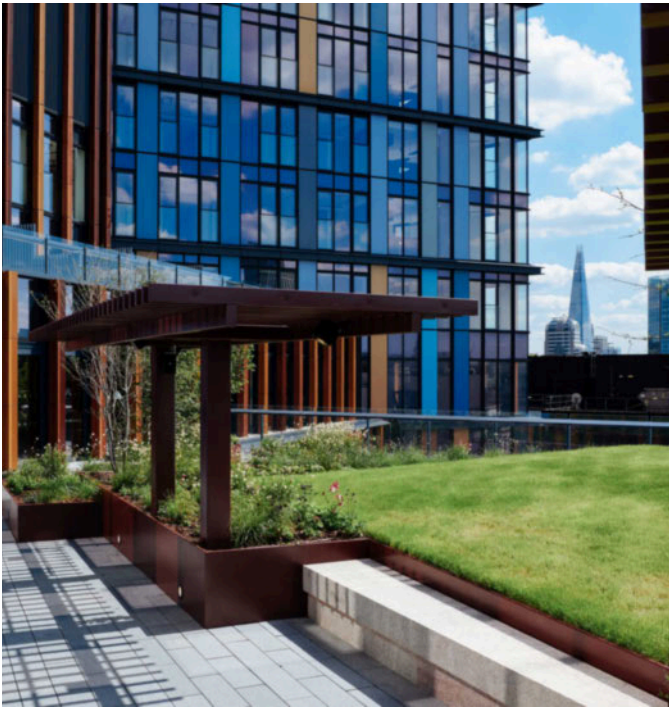
One Crown Place, The City, London, EC2A

-  1 Bedroom
-  1 Bathroom
-  1 Reception
-  Winter Garden
-  24-Hour Concierge
-  Gym
-  Cinema
-  Communal Terrace
-  0.2 MI Liverpool Street Station

Modern sizable 1 bedroom apartment set within this stunning residential development, One Crown Place EC2A. Comprising an open-plan living area, private winter garden with views across Central London, high-spec integrated kitchen, spacious master bedroom with fitted wardrobes and modern bathroom suite. Residents benefit from a 24-hr concierge service and amenities including a gym, screening room, private dining room and terrace space. The neighbourhood offers a wide mix of award-winning restaurants, bars, cafes and shops in nearby Broadgate, Spitalfields Market and Devonshire Square.

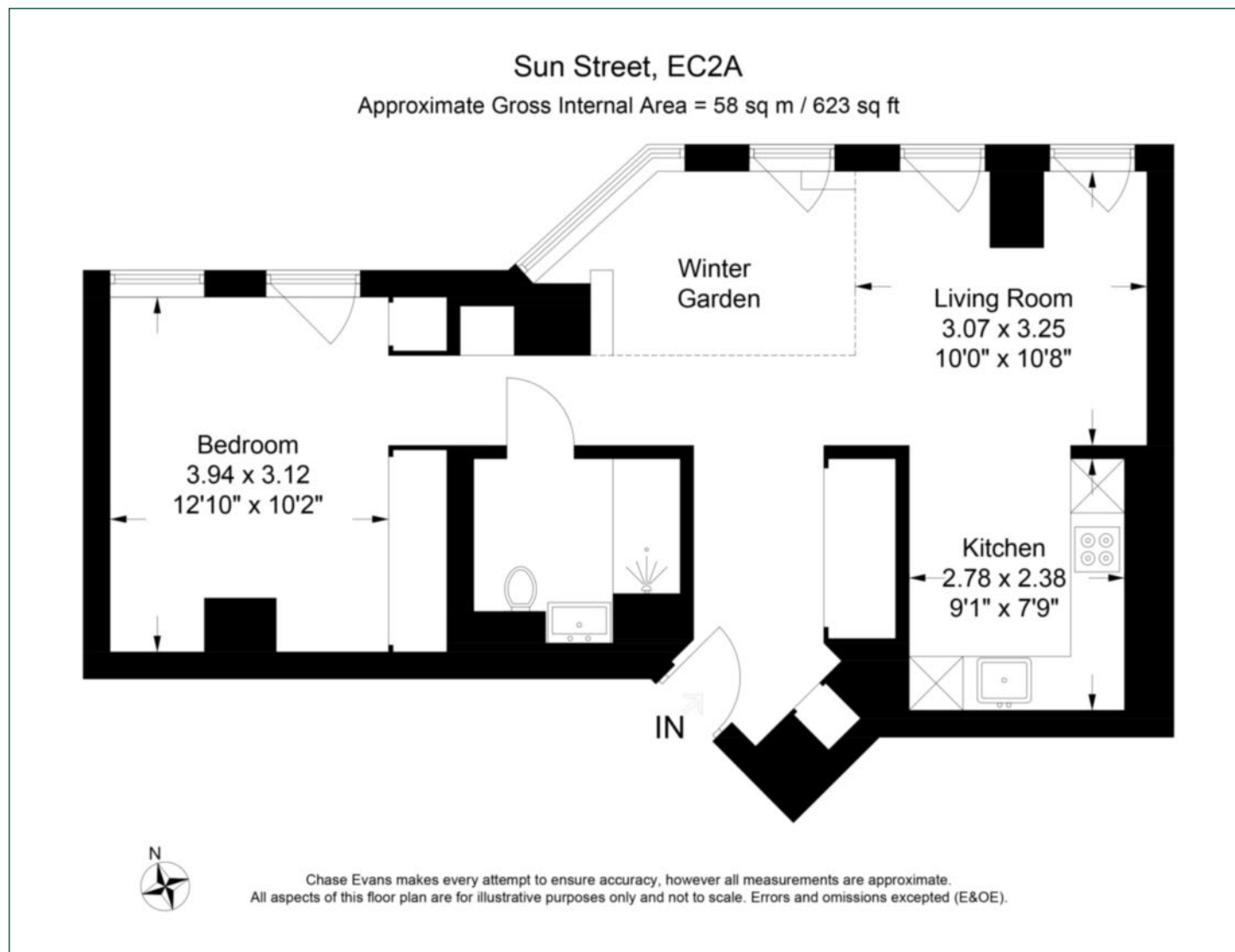
The apartment is located only 0.2 miles from Liverpool Street Rail and Underground station providing access to Circle, Hammersmith & City, and Metropolitan Underground trains, London Overground (including Stanstead Express), TfL Rail and the Elizabeth Line. Trains from Liverpool Street link London with Cambridgeshire, Essex, Hertfordshire, Norfolk and Suffolk.

Local Authority:	Hackney
Council Tax Band:	E
EPC:	B
Security deposit:	equivalent to 5 weeks' rent



Floorplan

623 sq ft | 58 sq m



City & Aldgate

122 Whitechapel High Street, London, E1 7PT

Lettings

020 7247 3888 | city.lettings@chaseevans.com

We're here to help.

IMPORTANT NOTICE - These particulars have been prepared in good faith and they are not intended to constitute part of an offer or contract. We have not performed a structural survey on this property and the services, appliances and specific fittings have not been tested. All photographs, measurements, floor plans and distances referred to are given as a guide and should not be relied upon.

chaseevans.com

 Chase Evans