







Tottenham Court Road West, Fareham Street, Soho, W1

Price **£1,200 per week** | Furnished



Tottenham Court Road West, Fareham Street, Soho, W1

-  2 Bedrooms
-  2 Bathrooms
-  1 Reception
-  Balcony
-  Local Amenities
-  24-Hour Concierge
-  0.2 MI Tottenham Court Road

Spectacular two bedroom apartment with a balcony set within the new development TCRW set within Soho.

Comprising a generous open plan living area featuring state-of-the-art high gloss lacquered kitchen cabinets with Quartz stone worktops and Miele integrated appliances and a bespoke entertainment unit, full height glazing creating an abundance of light throughout, engineered timber flooring, ample storage throughout. The bedrooms have bespoke fitted wardrobes, master with en suite, porcelain marble tiled bathrooms with

underfloor heating.

Residents have access to 24-hour concierge. Located in the heart of London's sought-after West End district, Local amenities such as restaurants, bars, and nightlife of Soho.

Transport links include Oxford Circus underground station (Central, Victoria and Bakerloo lines) and Tottenham Court Road (Central, Northern and Elizabeth lines).



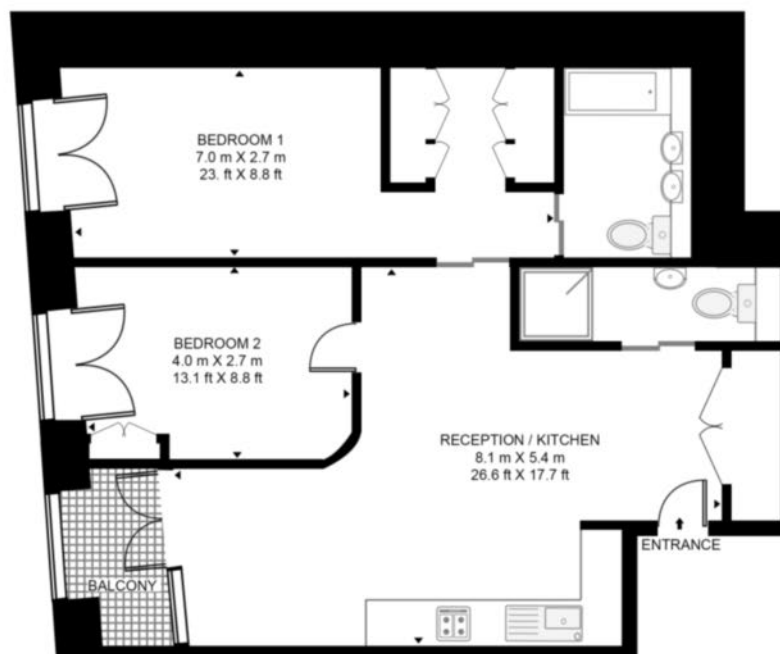
Local Authority:	City of Westminster London
Council Tax Band:	B
EPC:	B
Security deposit:	equivalent to 5 weeks' rent

Floorplan

785 sq ft | 72.9 sq m



TOTTENHAM COURT ROAD, 2 FAREHAM STREET, W1F
APPROXIMATE GROSS INTERNAL FLOOR AREA 785 SQ.FT (72.9 SQ.M)



Whilst every attempt has been made to ensure the accuracy of the floor plan contained here, measurements of door, windows, rooms and any other items are approximate and no responsibility is taken for any error, omission, or mis-statement. The plan for illustrative purposes only and should be used as such by any prospective purchaser. The services, system and appliances shown have not been tested and no guarantee as to their operability or efficiency can be given.

City & Aldgate

122 Whitechapel High Street, London, E1 7PT

Lettings

020 7247 3888 | city.lettings@chaseevans.com

We're here to help.

IMPORTANT NOTICE - These particulars have been prepared in good faith and they are not intended to constitute part of an offer or contract. We have not performed a structural survey on this property and the services, appliances and specific fittings have not been tested. All photographs, measurements, floor plans and distances referred to are given as a guide and should not be relied upon.

chaseevans.com

 **Chase Evans**