











West Tower, Pan Peninsula Square, Canary Wharf, E14

Price **£525 per week** | Furnished



West Tower, Pan Peninsula Square, Canary Wharf, E14

-  1 Bedroom
-  1 Bathroom
-  1 Reception
-  Balcony
-  Gymnasium
-  Local Amenities
-  24-Hour Concierge
-  0.1 MI South Quay

A spacious one bedroom apartment set within Pan Peninsula's West Tower. The apartment includes an open plan living area, modern fitted kitchen with integrated appliances, wood flooring, floor to ceiling glazing, double bedroom with fitted wardrobe, modern bathroom décor and a private balcony.

Residents will also have access to a 24-hour concierge, an onsite private cinema, residents' gymnasium and swimming pool. The development is within walking distance of Canary Wharf, providing access to transport links and a great selection of amenities including the Canary Wharf

Shopping Centre.

Situated just a 2-mins walk from South Quay DLR station which makes commutes to areas such as Bank achievable in just 14-mins. The development is also within walking distance of Canary Wharf Underground and the Elizabeth Line service for high-speed connection pan throughout the Capital.

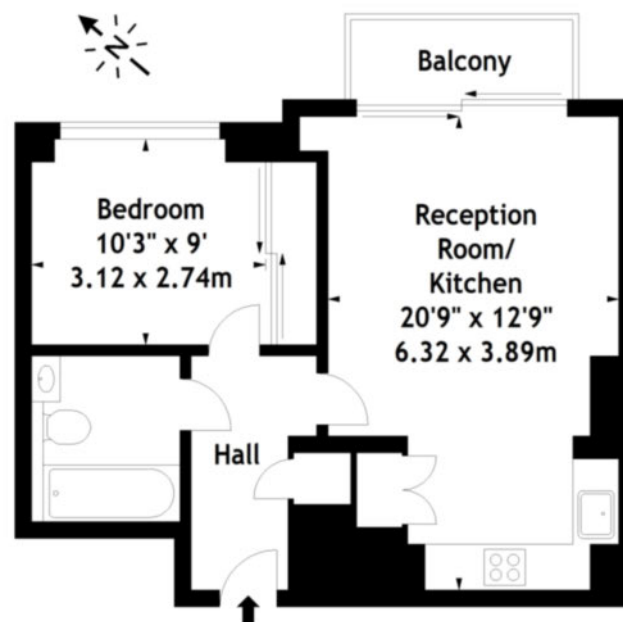


Local Authority:	Tower Hamlets
Council Tax Band:	F
EPC:	B
Security deposit:	equivalent to 5 weeks' rent

Floorplan

495 sq ft | 45.99 sq m

Pan Peninsula, E14
Approx. Gross Internal Area
495 Sq Ft - 45.99 Sq M



Twenty Second Floor

Measured in accordance with RICS guidelines. Every attempt is made to ensure accuracy, however all measurements are approximate. This floor plan is for illustrative purposes only and is not to scale.
© Datagraphy Ltd 2015
Photographs * Floorplans * Virtual Tours
Tel: 0845 643 4401 www.datagraphy.com

Pan Peninsula

Pan Peninsula, 1 Millharbour, London, E14 9XP

Lettings

020 7536 7900 | panp.lettings@chaseevans.com

We're here to help.

IMPORTANT NOTICE - These particulars have been prepared in good faith and they are not intended to constitute part of an offer or contract. We have not performed a structural survey on this property and the services, appliances and specific fittings have not been tested. All photographs, measurements, floor plans and distances referred to are given as a guide and should not be relied upon.

chaseevans.com

 Chase Evans