

- ONE BEDROOM
- 11TH FLOOR
- WINTER GARDEN
- 24HR CONCIERGE
- GYM

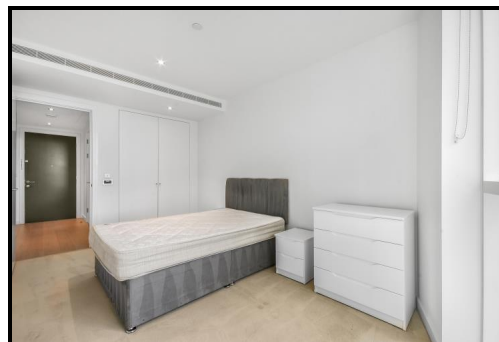
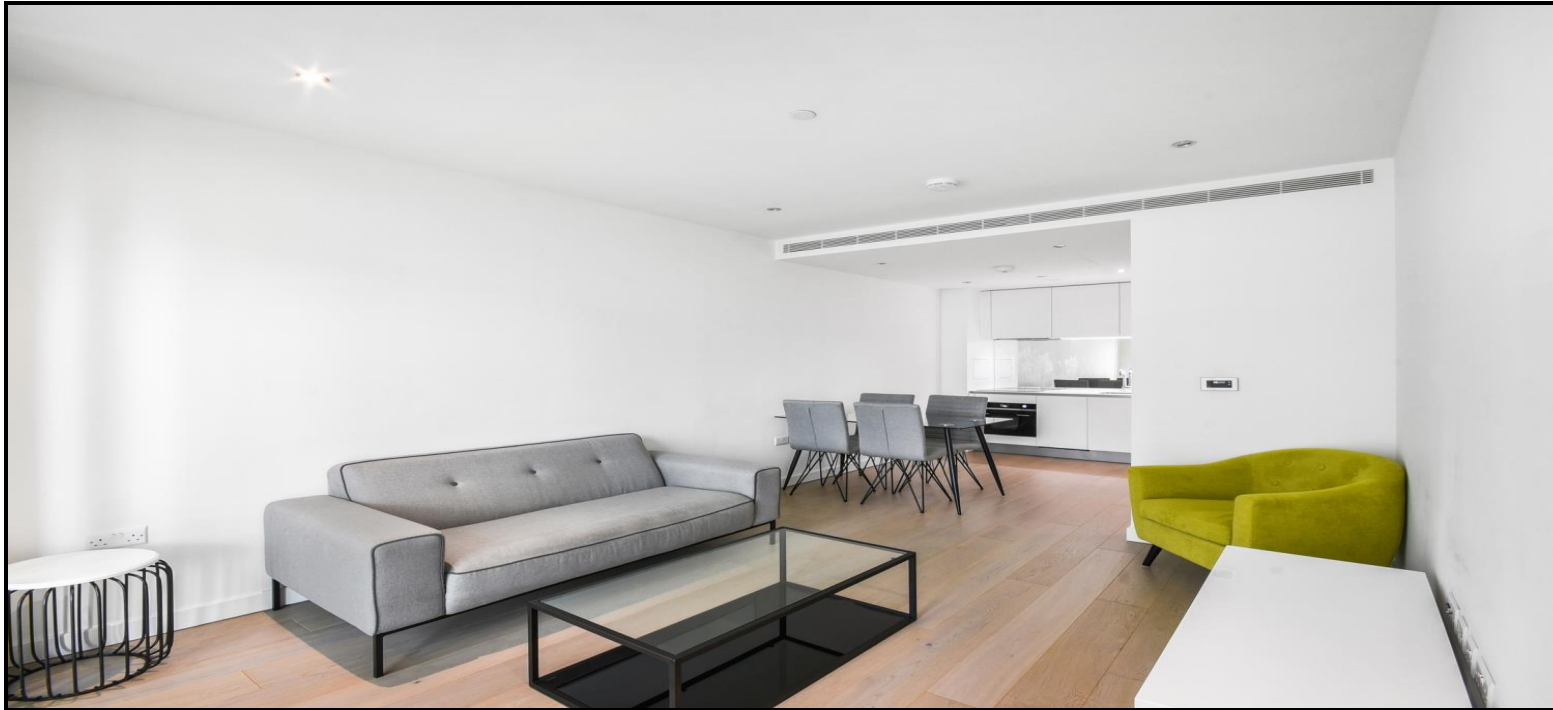
A fantastic one bedroom apartment set on the 11th floor of Sky Gardens, a prominent contemporary development in Nine Elms SW8. The generous open plan living room extends onto a fully integrated kitchen and features modern appliances, wood floors and extensive glazing affording wide city views. The ample size bathroom has a wardrobe and there is a stylish bathroom suite.

£595,000 (Leasehold)



**SKY GARDENS, WANDSWORTH ROAD,
VAUXHALL SW8**

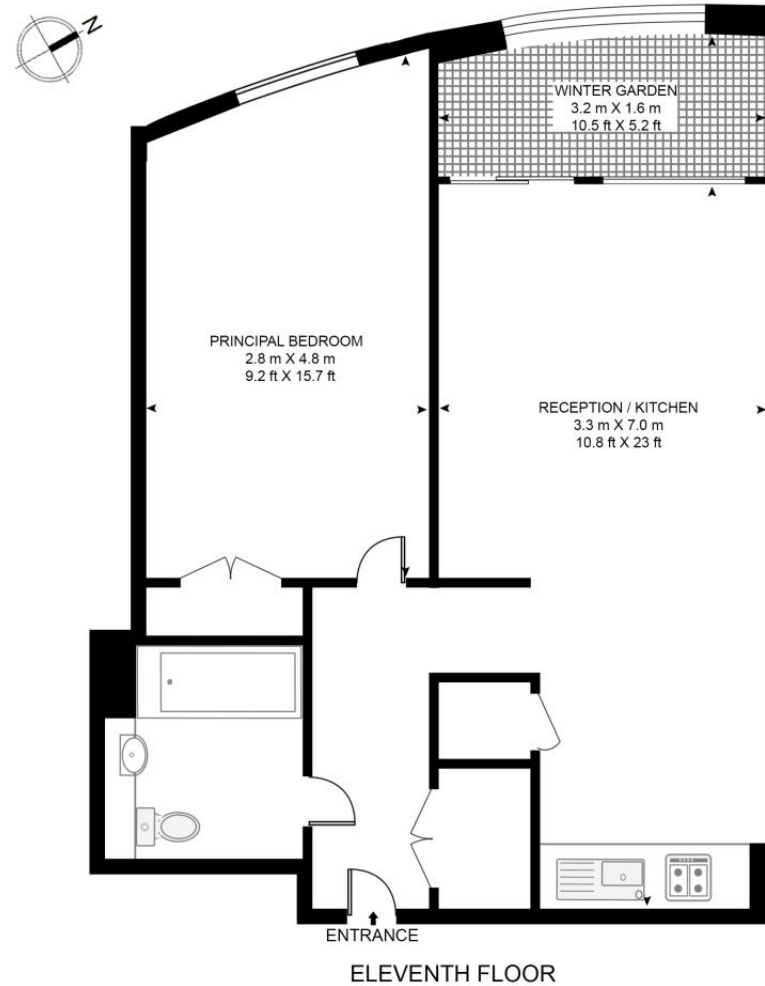
£595,000 (Leasehold)



**SKY GARDENS, WANDSWORTH ROAD,
VAUXHALL SW8**

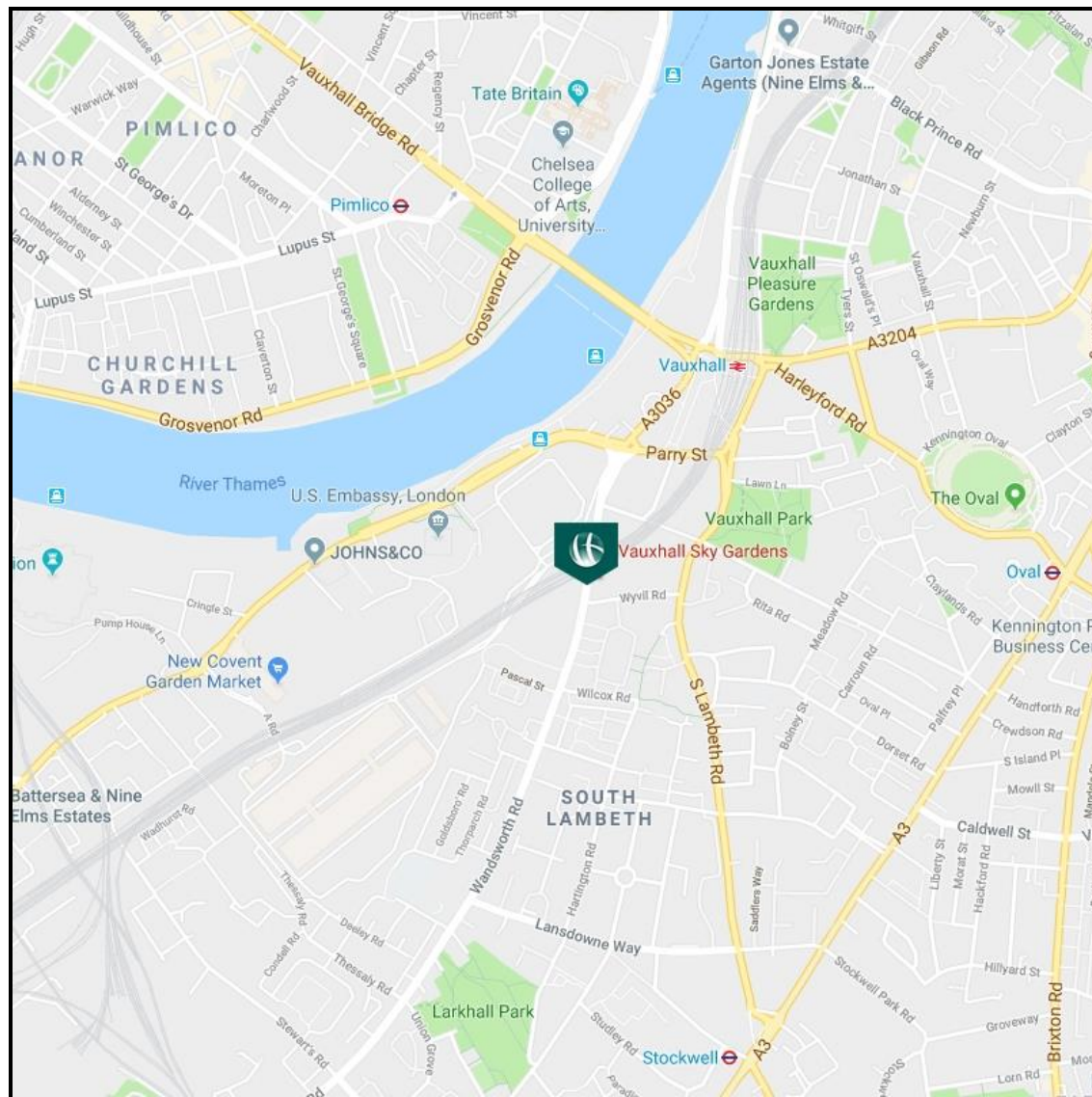
£595,000 (Leasehold)

SKY GARDENS, 155 WANDSWORTH ROAD
APPROXIMATE GROSS INTERNAL FLOOR AREA 493 SQ.FT (45.8 SQ.M)
(INCLUDING WINTER GARDEN 546 SQ.FT (50.7 SQ.M))



SKY GARDENS, WANDSWORTH ROAD, VAUXHALL SW8

£595,000 (Leasehold)



Energy Efficiency Rating			Environmental Impact Rating		
	Current	Potential		Current	Potential
Very energy efficient - lower running costs			Very environmentally friendly - lower CO ₂ emissions		
(92-100) A			(92-100) A		
(81-91) B			(81-91) B		
(69-80) C			(69-80) C		
(55-68) D			(55-68) D		
(39-54) E			(39-54) E		
(21-38) F			(21-38) F		
(1-20) G			(1-20) G		
Not energy efficient - higher running costs			Not environmentally friendly - higher CO ₂ emissions		
England & Wales			England & Wales		
EU Directive 2002/91/EC			EU Directive 2002/91/EC		
The energy efficiency rating is a measure of the overall efficiency of a home. The higher the rating the more energy efficient the home is and the lower the fuel bills will be.			The environmental impact rating is a measure of a home's impact on the environment in terms of carbon dioxide (CO ₂) emissions. The higher the rating the less impact it has on the environment.		

View Property

Contact Information:

Elephant and Castle Office

5 St Gabriel Walk, London, SE1 6FS

Tel: 020 3869 2888

Email: ajames@chaseevans.co.uk