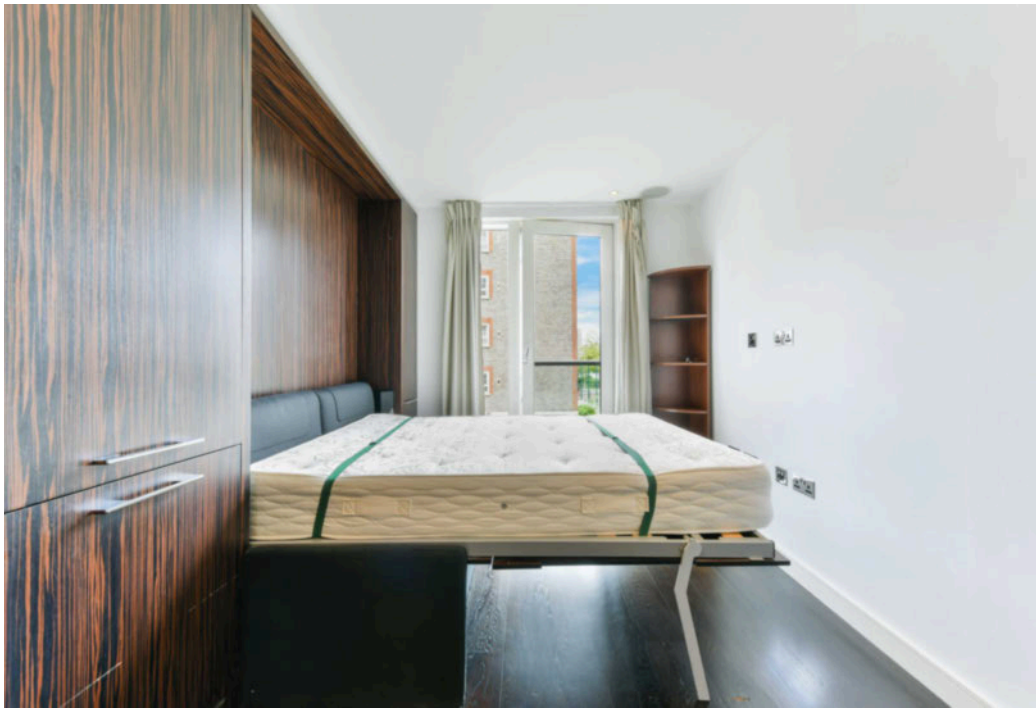
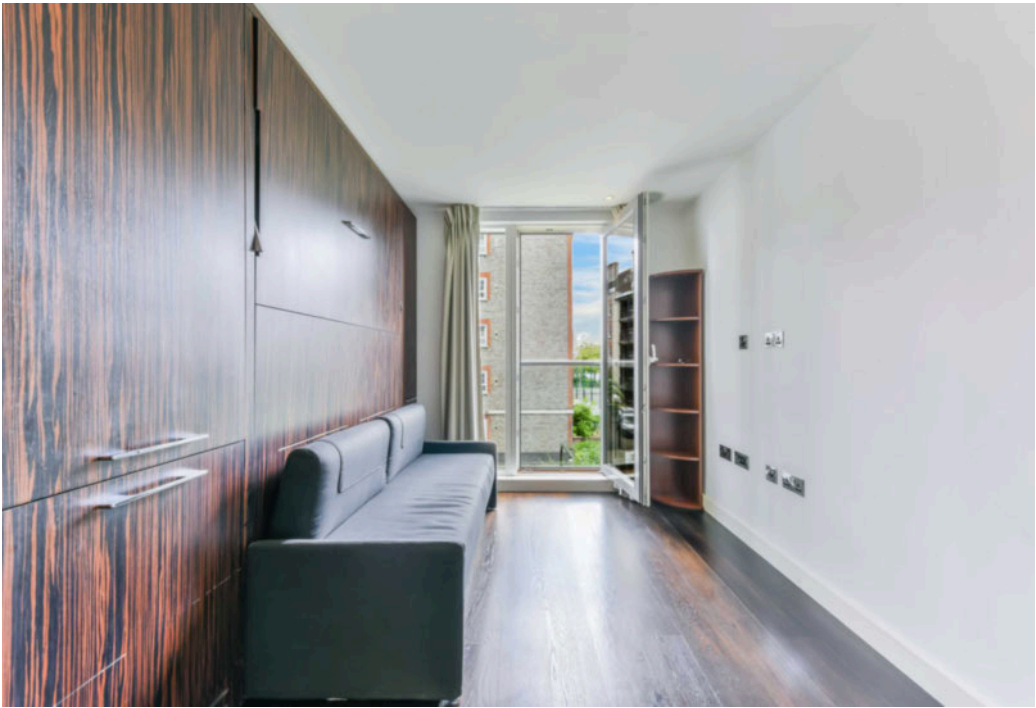









## Moore House, Grosvenor Waterside, Gatliff Road, SW1W

Price **£335 per week** | Furnished



# Moore House, Grosvenor Waterside, Gatliff Road, SW1W

-  Studio
-  1 Bathroom
-  1 Reception
-  Leisure Facilities
-  Local Amenities
-  Concierge Service
-  0.4 MI Sloane Square

A modern studio apartment set within this desirable development in Chelsea. The property is offered fully furnished and benefits from a well-lit, open plan living area with a small Juliet balcony. Floor-to-ceiling windows illuminate a sleek fitted kitchen with integrated appliances. Bathroom is a sleek, contemporary suite with shower with smart controls.

Moore House offers residents leisure facilities, 24-hour concierge and great transport links. The property is just half a mile from Sloane Square for all Circle and District Line Services and less than three

quarters of a mile to Victoria for Victoria Line, Southern, Southeastern, Thameslink and Gatwick Express services.

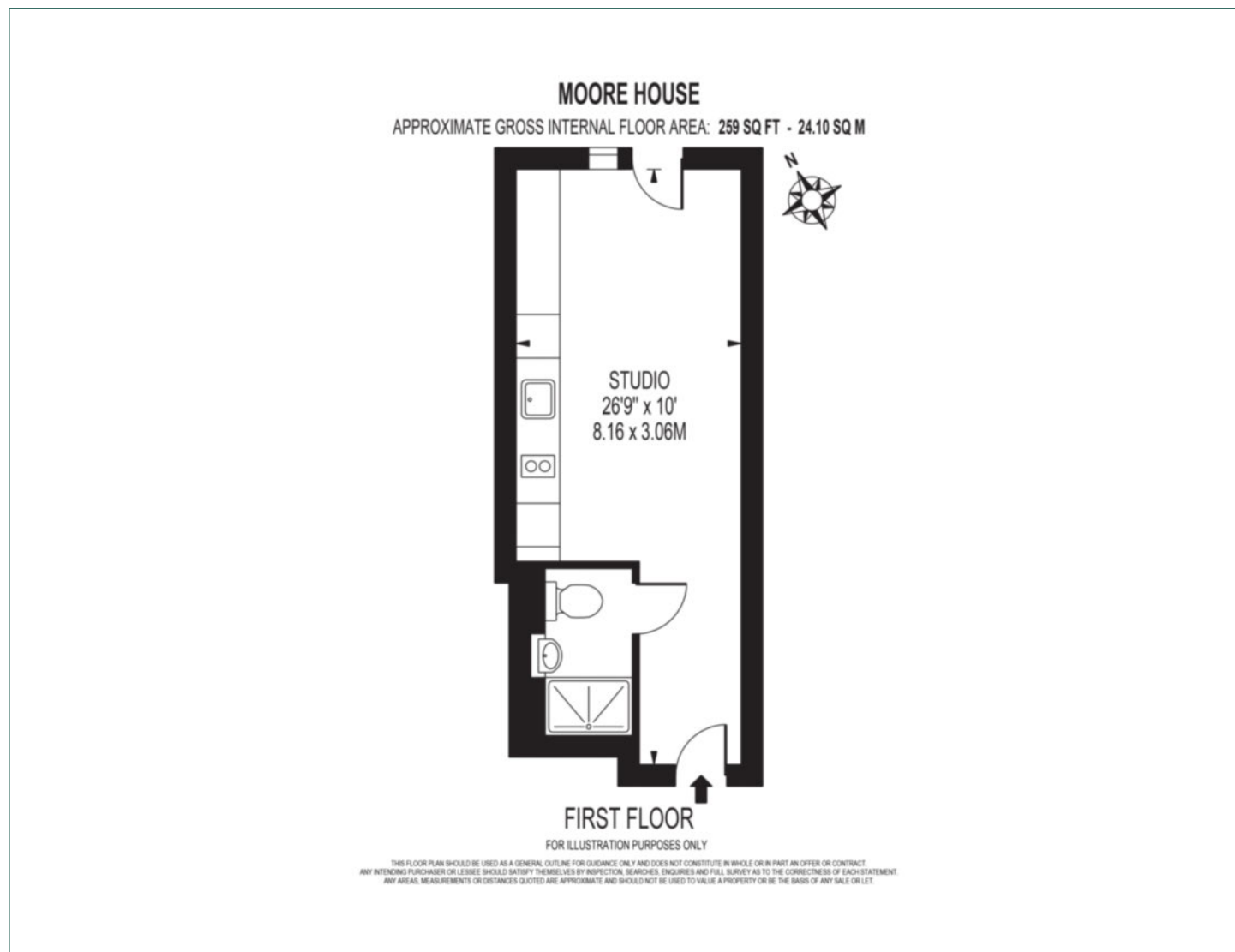
Locally, just one mile away is Battersea Park with wooded areas, boating lakes and a children's zoo. Further, this property is just 14mins from the Saatchi gallery and Chelsea's Kings Road and all its amenities.

Local Authority:	Kensington & Chelsea
Council Tax Band:	D
EPC:	B
Security deposit:	equivalent to 5 weeks' rent



# Floorplan

259 sq ft | 24.10 sq m



## Elephant & Castle

One The Elephant, 5 St Gabriel Walk, London, SE1 6FG

## Lettings

020 3869 2888 | [eandc.lettings@chaseevans.com](mailto:eandc.lettings@chaseevans.com)

## We're here to help.

IMPORTANT NOTICE - These particulars have been prepared in good faith and they are not intended to constitute part of an offer or contract. We have not performed a structural survey on this property and the services, appliances and specific fittings have not been tested. All photographs, measurements, floor plans and distances referred to are given as a guide and should not be relied upon.

[chaseevans.com](https://chaseevans.com)

 Chase Evans