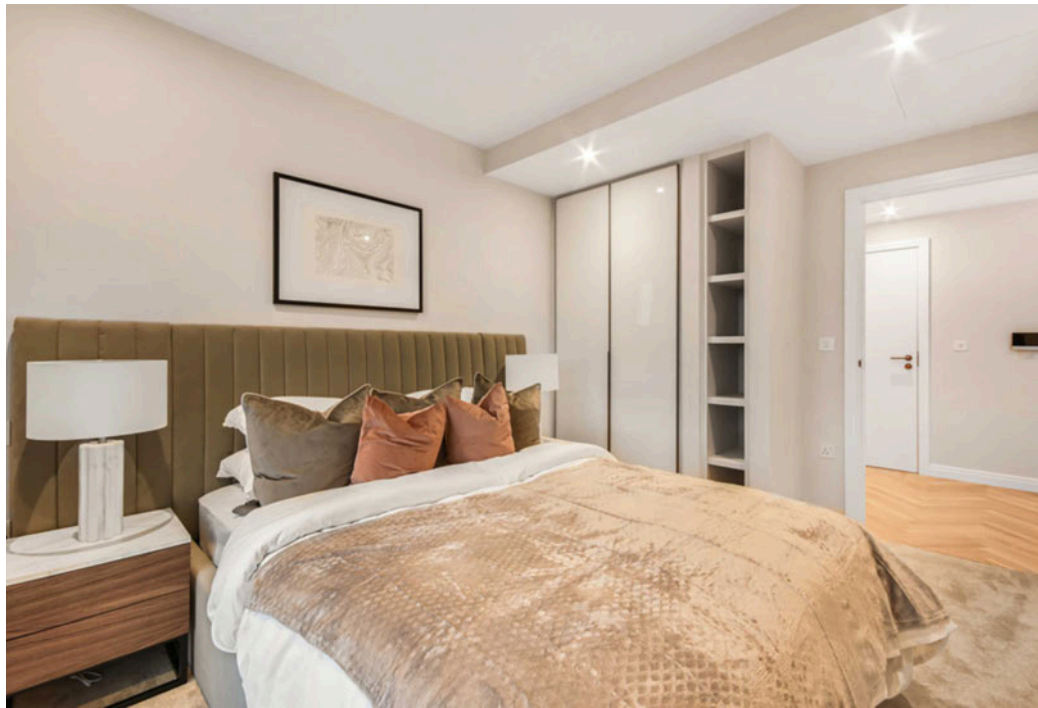







Hampton House, Kings Road Park, Michael Road, Fulham, SW6

Price **£685 per week** | Furnished



Hampton House, Kings Road Park, Michael Road, Fulham, SW6

-  1 Bedroom
-  1 Bathroom
-  1 Reception
-  Balcony
-  Gymnasium
-  Local Amenities
-  24-Hour Concierge
-  0.4 MI Fulham Broadway

A luxury one bedroom apartment with a balcony in the sought-after King's Road Park development in Fulham. The generously sized open-plan living is bright comprising a kitchen/living room, ample bedroom, and a modern bathroom. Features: engineered timber flooring, underfloor heating, comfort cooling, bespoke kitchen cabinetry and contemporary bathroom ware.

Residents will benefit from a 24-hour concierge and onsite fitness facilities including a 25m swimming pool, vitality pool, steam room and sauna, gym and fitness studios. Further facilities include a games

room, virtual golf room, two cinemas, private meeting rooms, a private dining room, and a residents' lounge with an atrium courtyard garden. Secure cycle storage is also provided.

King's Road Park is a luxury central London development scheme that borders King's Road and Chelsea Harbour/Imperial Wharf neighbourhoods. Launched in May 2018, King's Road Park forms part of the South Fulham Riverside Regeneration Area and offers prime waterside London real estate. The development will deliver approx. 1,800 homes and 2.7ha of new public space.



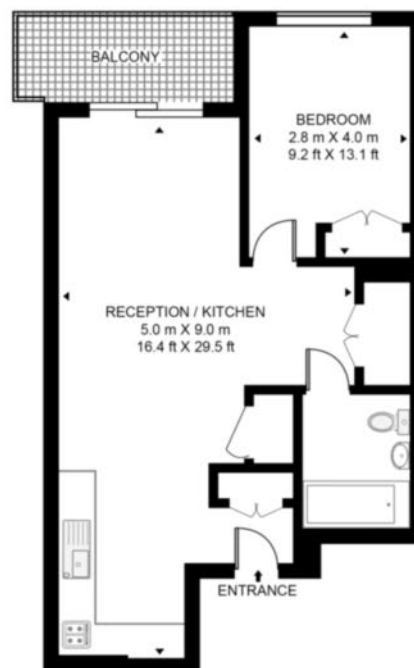
Local Authority:	Hammersmith & Fulham
Council Tax Band:	E
EPC:	B
Security deposit:	equivalent to 5 weeks' rent

Floorplan

566 sq ft | 52 sq m



HAMPTON HOUSE, KINGS ROAD PARK, SW6
APPROXIMATE GROSS INTERNAL FLOOR AREA 566 SQ.FT (52.6 SQ.M)



Whilst every attempt has been made to ensure the accuracy of the floor plan contained here, measurements of door, windows, rooms and any other items are approximate and no responsibility is taken for any error, omission, or mis-statement. The plan for illustrative purposes only and should be used as such by any prospective purchaser. The services, system and appliances shown have not been tested and no guarantee as to their operability or efficiency can be given.

Elephant & Castle

One The Elephant, 5 St Gabriel Walk, London, SE1 6FA

Lettings

020 3869 2888 | eandc.lettings@chaseevans.com

We're here to help.

IMPORTANT NOTICE - These particulars have been prepared in good faith and they are not intended to constitute part of an offer or contract. We have not performed a structural survey on this property and the services, appliances and specific fittings have not been tested. All photographs, measurements, floor plans and distances referred to are given as a guide and should not be relied upon.

chaseevans.com

 Chase Evans